

**Structure, Volume 25**

## **Supplemental Information**

### **Critical Role of Water**

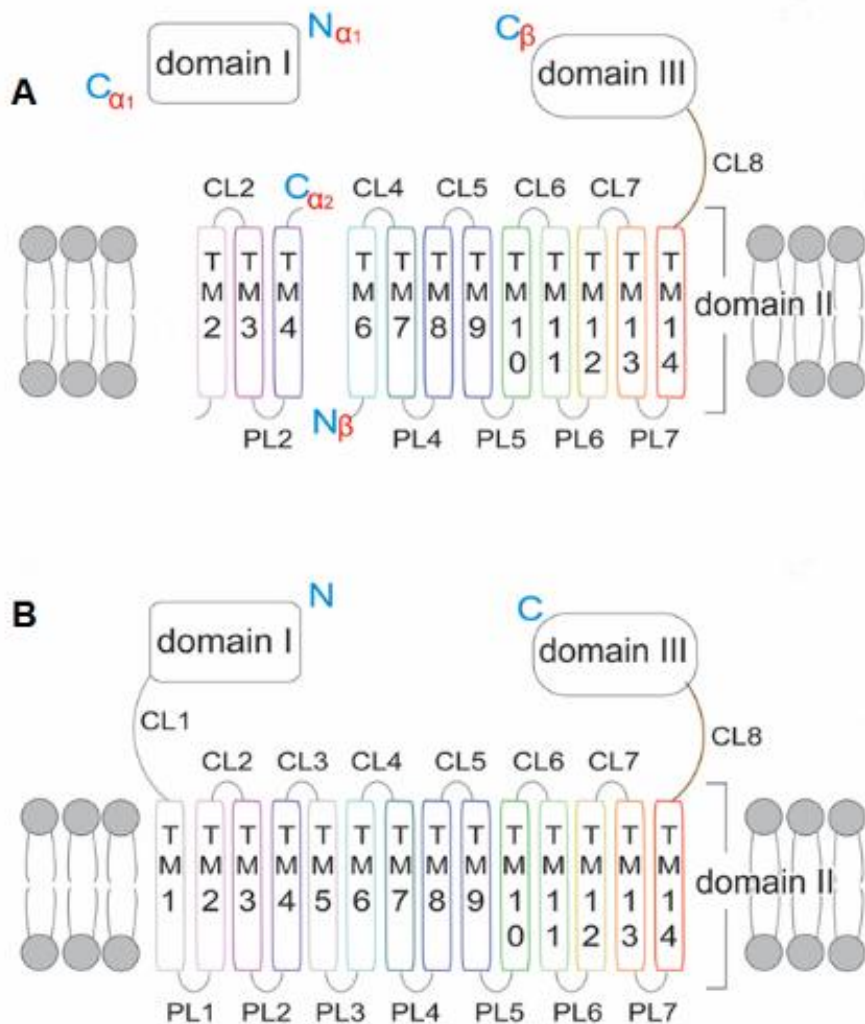
#### **Molecules in Proton Translocation**

#### **by the Membrane-Bound Transhydrogenase**

**Pius S. Padayatti, Josephine H. Leung, Paween Mahinthichaichan, Emad Tajkhorshid, Andrii Ishchenko, Vadim Cherezov, S. Michael Soltis, J. Baz Jackson, C. David Stout, Robert B. Gennis, and Qinghai Zhang**

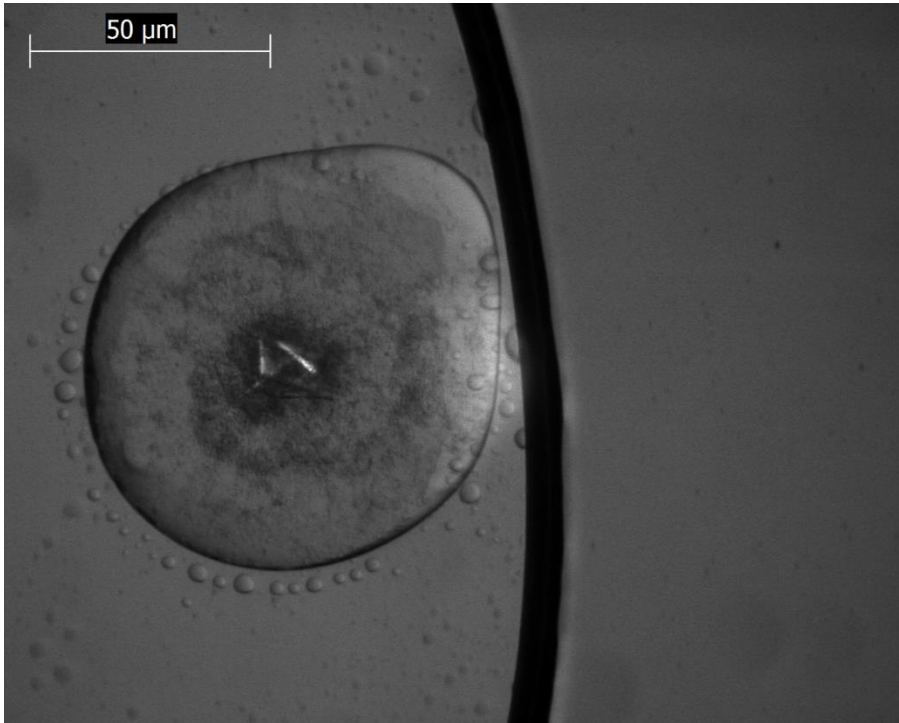
**Supplemental information**

**Figure S1**, Comparison of TH domain organization in bacterium and human; Related to **Figure 1** and the introduction of the main text



Schematic diagram showing comparison between the overall architecture of holo-TH from *Thermus thermophilus* (A) and *Homo sapiens* (B). The numbering of TM helices is based on the human enzyme that have 14 TM helices.

**Figure S2**, Protein crystals of dII domain grown using LCP methods; Related to LCP crystallization under STAR method



Representative light microscopic view of the dII domain crystals growing in LCP. The bar represents 50 μm.