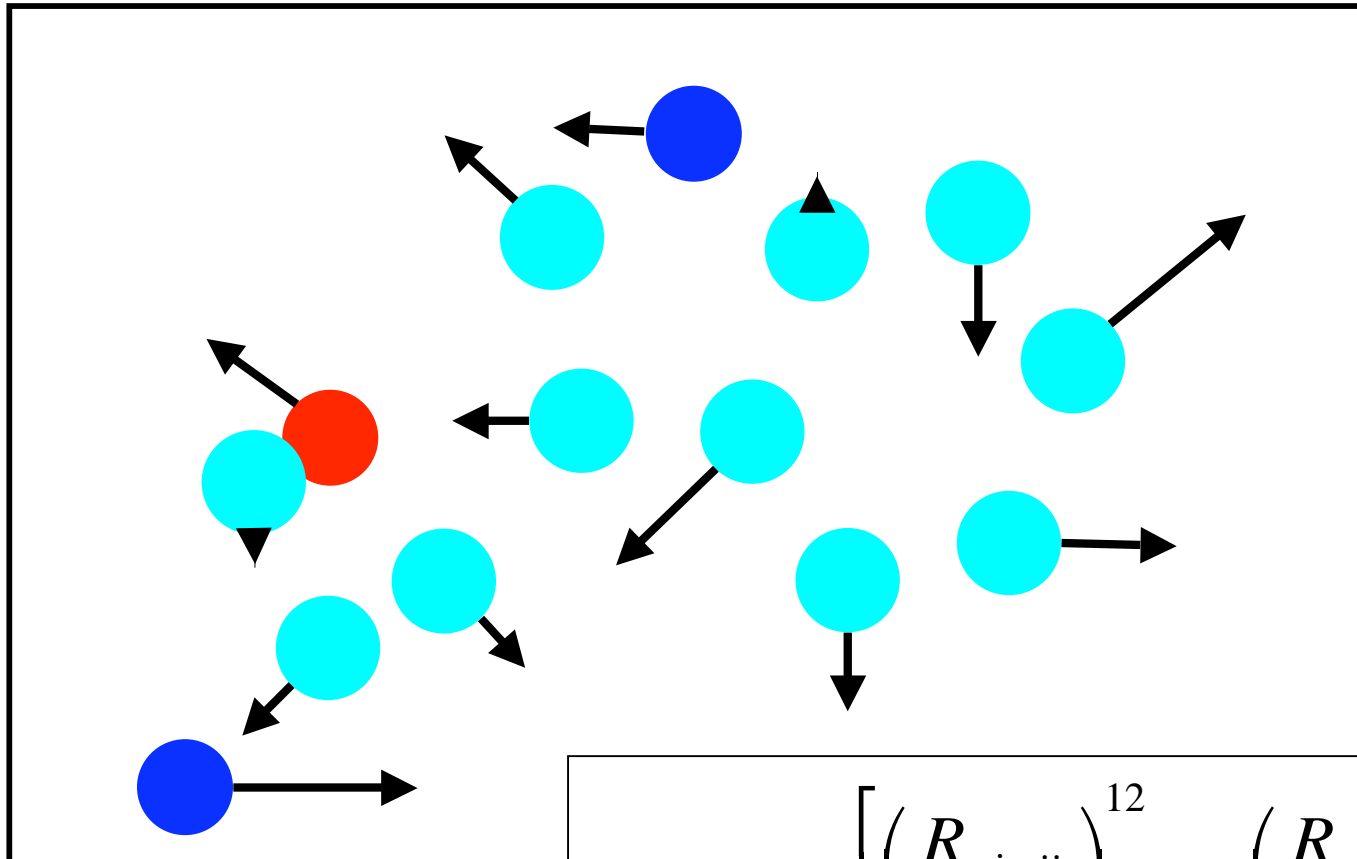


Force Fields for MD simulations

- Topology/parameter files
- Where do the numbers an MD code uses come from?
- How to make topology files for ligands, cofactors, special amino acids, ...
- How to obtain/develop missing parameters.

Classical Molecular Dynamics



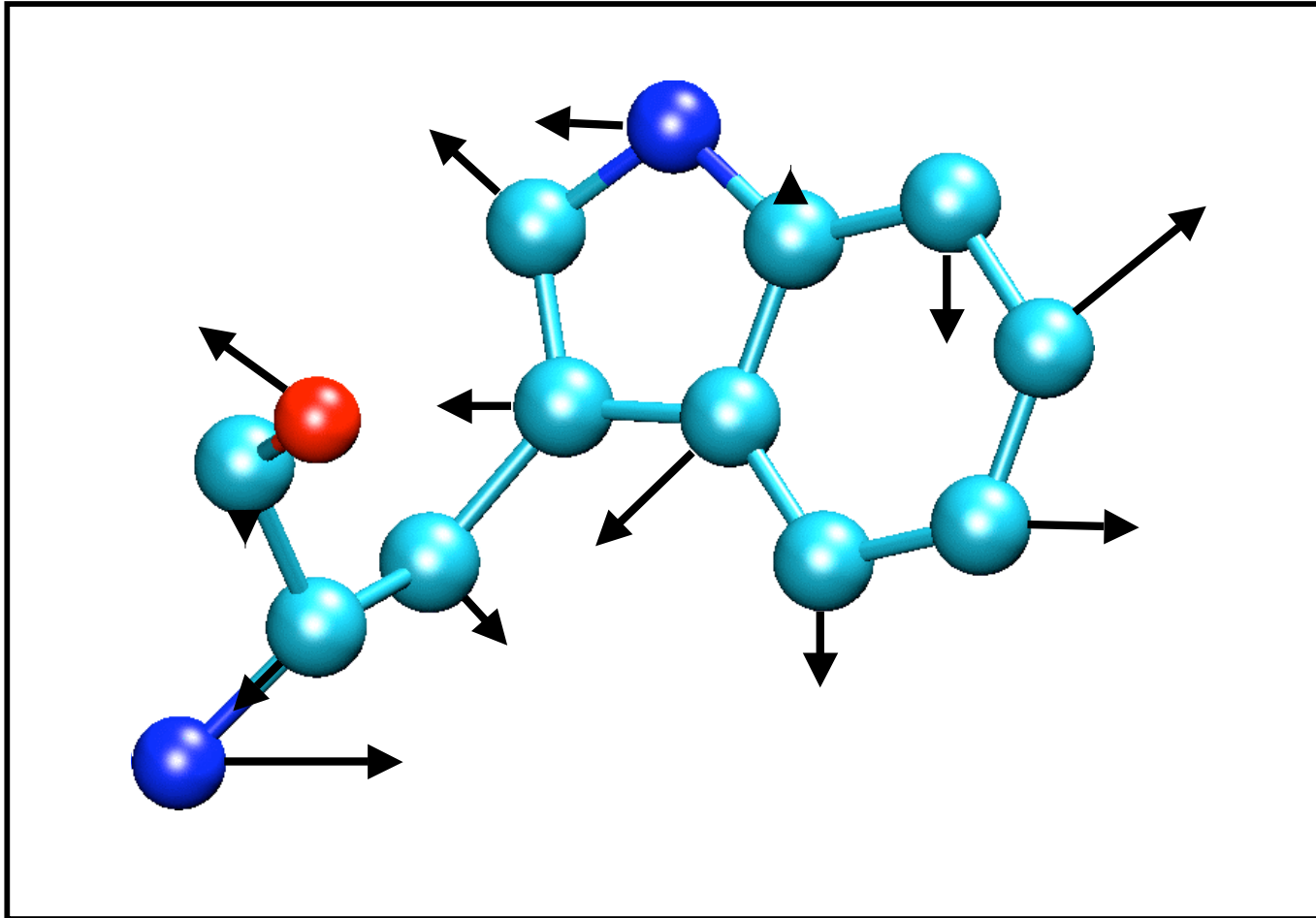
$$U(r) = \frac{1}{4\pi\epsilon_0} \frac{q_i q_j}{r_{ij}}$$

Coulomb interaction

$$U(r) = \epsilon_{ij} \left[\left(\frac{R_{\min,ij}}{r_{ij}} \right)^{12} - 2 \left(\frac{R_{\min,ij}}{r_{ij}} \right)^6 \right]$$

van der Waals interaction

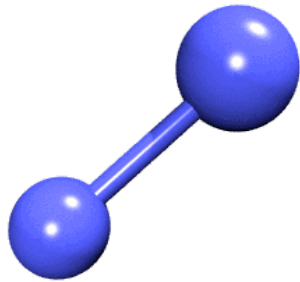
Classical Molecular Dynamics



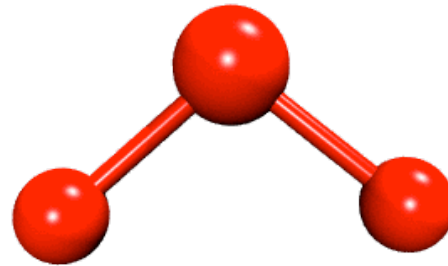
Bond definitions, atom types, atom names, parameters,

Energy Terms Described in the CHARMM Force Field

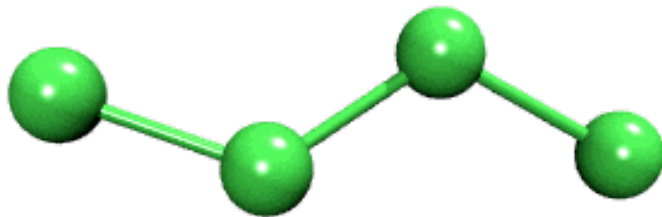
Bond



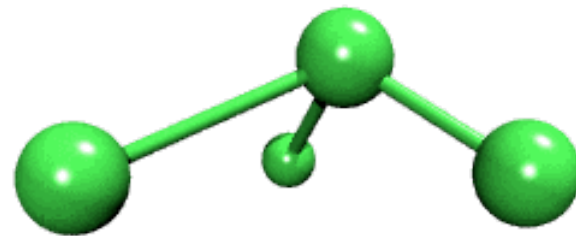
Angle



Dihedral



Improper



The Potential Energy Function

$$\begin{aligned}
 U(\vec{R}) = & \underbrace{\sum_{\text{bonds}} k_i^{\text{bond}} (r_i - r_0)^2}_{U_{\text{bond}}} + \underbrace{\sum_{\text{angles}} k_i^{\text{angle}} (\theta_i - \theta_0)^2}_{U_{\text{angle}}} + \\
 & \underbrace{\sum_{\text{dihedrals}} k_i^{\text{dihe}} [1 + \cos(n_i \phi_i + \delta_i)]}_{U_{\text{dihedral}}} + \\
 & \underbrace{\sum_i \sum_{j \neq i} 4\epsilon_{ij} \left[\left(\frac{\sigma_{ij}}{r_{ij}} \right)^{12} - \left(\frac{\sigma_{ij}}{r_{ij}} \right)^6 \right]}_{U_{\text{nonbond}}} + \sum_i \sum_{j \neq i} \frac{q_i q_j}{\epsilon r_{ij}}
 \end{aligned}$$

U_{bond} = oscillations about the equilibrium bond length

U_{angle} = oscillations of 3 atoms about an equilibrium bond angle

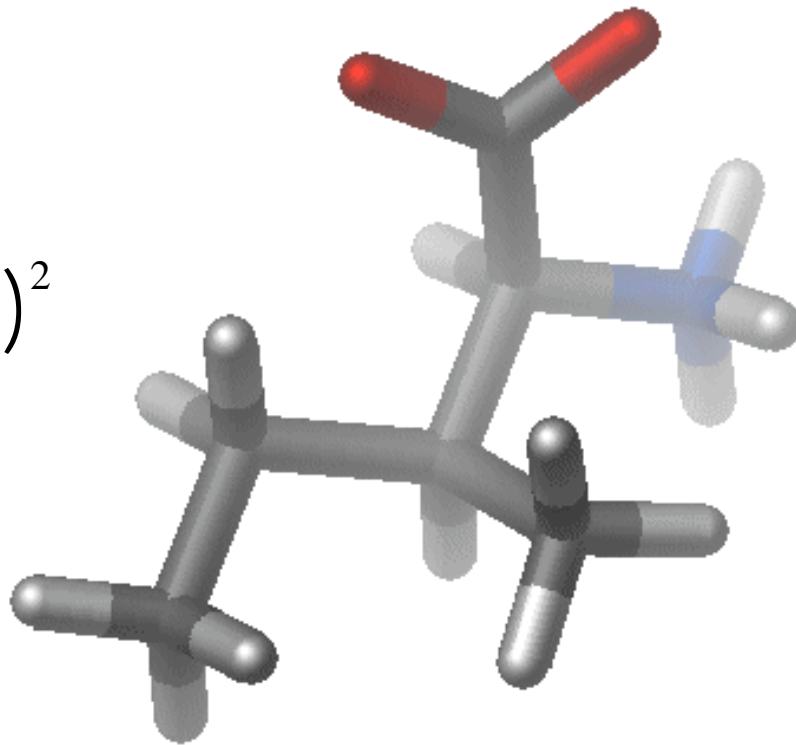
U_{dihedral} = torsional rotation of 4 atoms about a central bond

U_{nonbond} = non-bonded energy terms (electrostatics and Lenard-Jones)

Interactions between bonded atoms

$$V_{angle} = K_{\theta} (\theta - \theta_o)^2$$

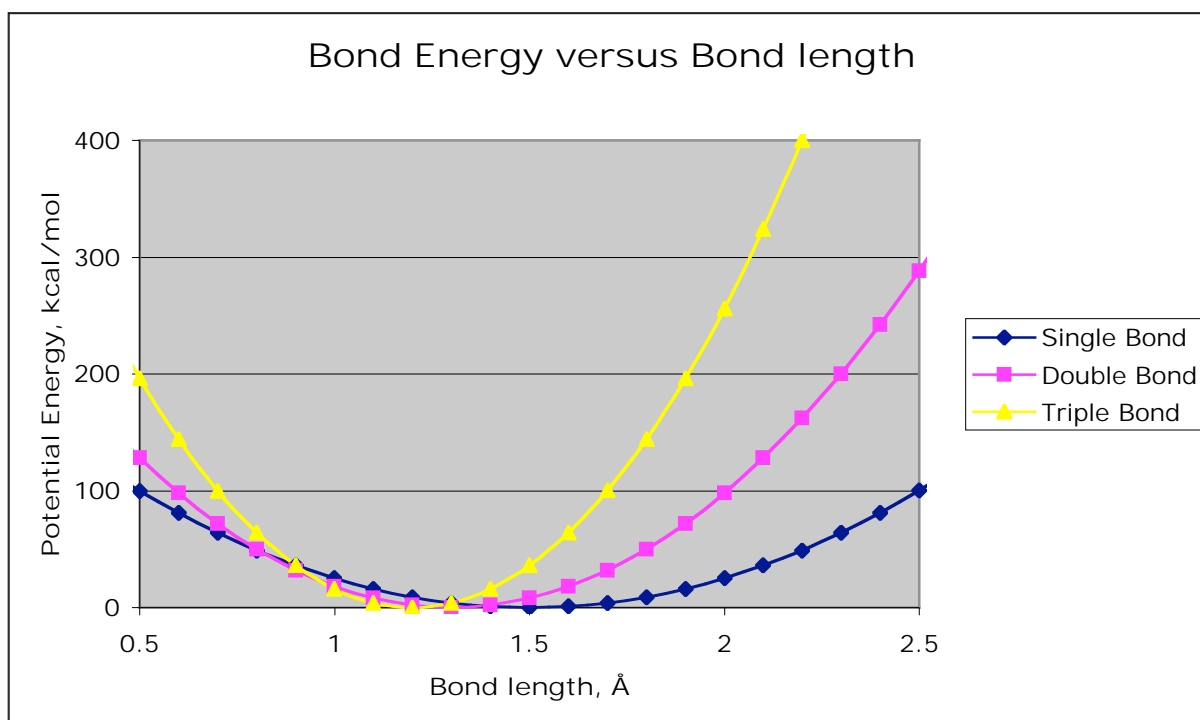
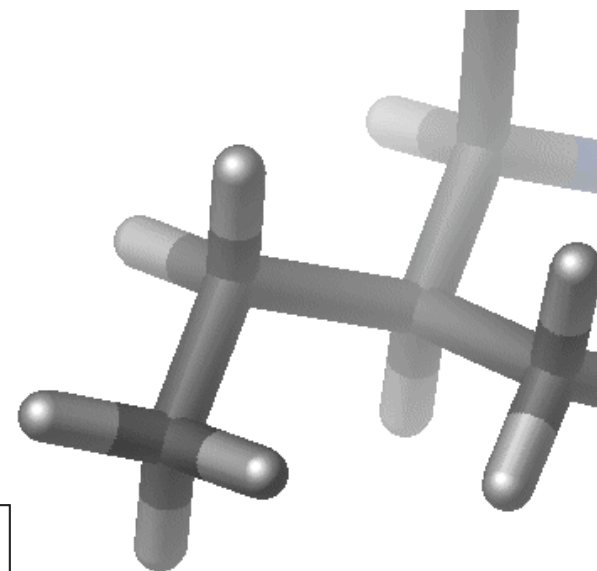
$$V_{bond} = K_b (b - b_o)^2$$



$$V_{dihedral} = K_{\phi} (1 + \cos(n\phi - \delta))$$

$$V_{bond} = K_b (b - b_o)^2$$

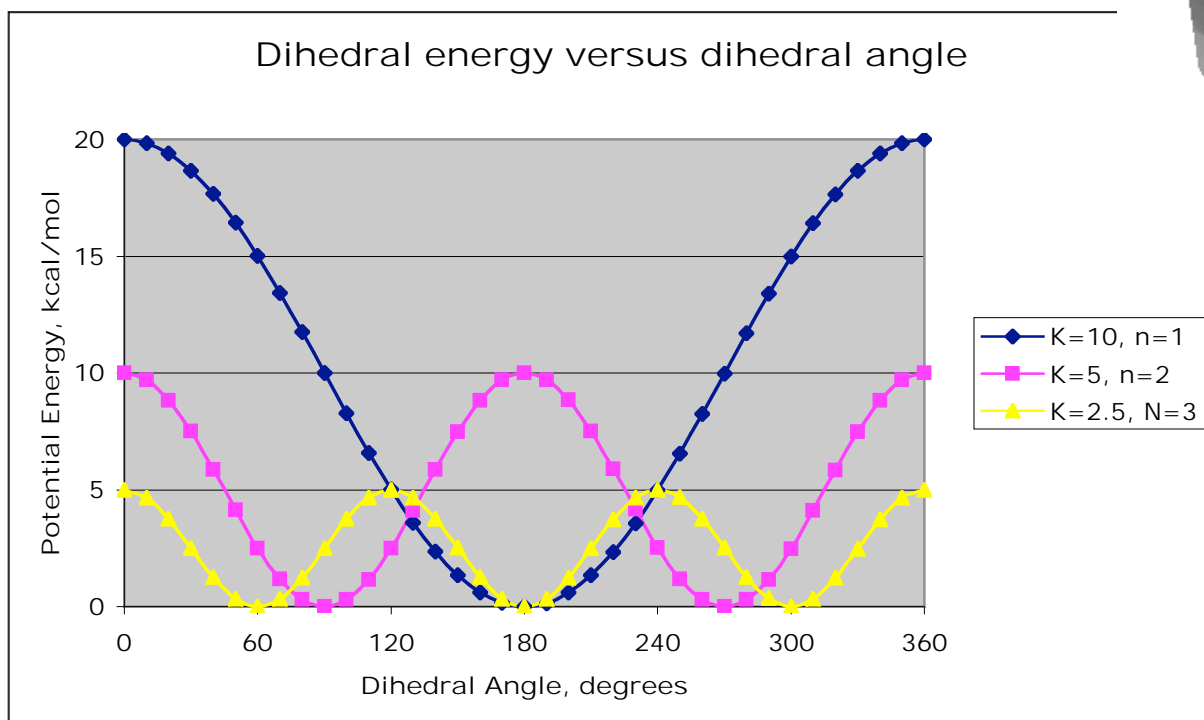
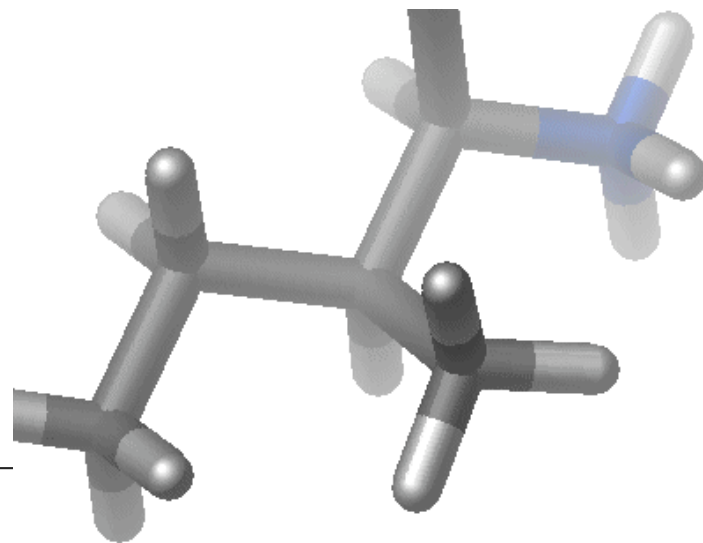
Chemical type	K_{bond}	b_o
C-C	100 kcal/mole/Å ²	1.5 Å
C=C	200 kcal/mole/Å ²	1.3 Å
C≡C	400 kcal/mole/Å ²	1.2 Å



Bond angles and *improper* terms have similar quadratic forms, but with softer spring constants. The force constants can be obtained from vibrational analysis of the molecule (experimentally or theoretically).

Dihedral Potential

$$V_{dihedral} = K_{\phi} (1 + \cos(n\phi - \delta))$$



$$\delta = 0^\circ$$

Nonbonded Parameters

$$\sum_{nonbonded} \frac{q_i q_j}{4\pi D r_{ij}} + \epsilon_{ij} \left[\left(\frac{R_{min,ij}}{r_{ij}} \right)^{12} - 2 \left(\frac{R_{min,ij}}{r_{ij}} \right)^6 \right]$$

q_i : partial atomic charge

D : dielectric constant

ϵ : Lennard-Jones (LJ, vdW) well-depth

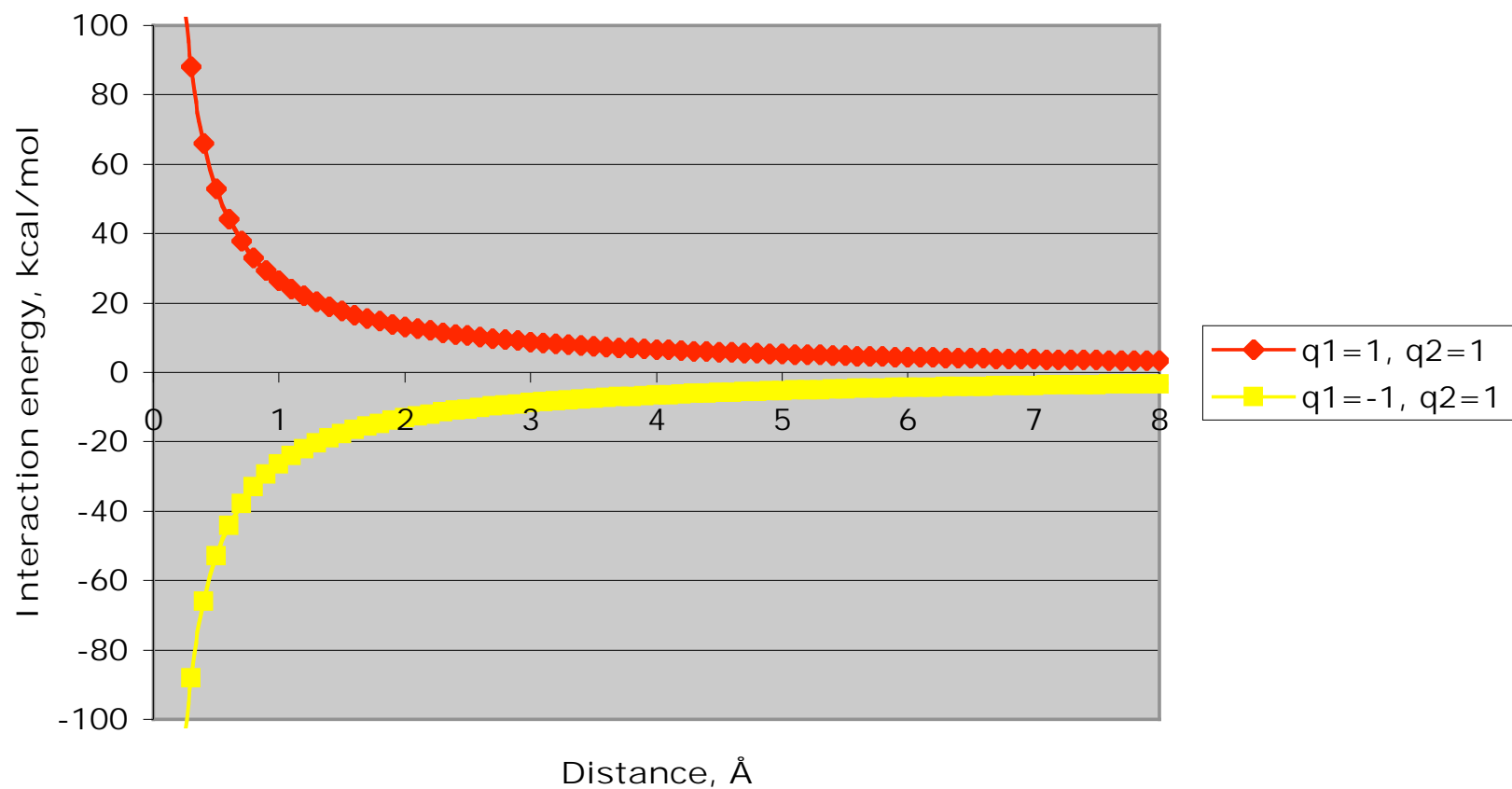
R_{min} : LJ radius ($R_{min}/2$ in CHARMM)

Combining rules (CHARMM, Amber)

$$R_{min\ i,j} = R_{min\ i} + R_{min\ j}$$

$$\epsilon_{i,j} = \text{SQRT}(\epsilon_i * \epsilon_j)$$

Electrostatic Energy versus Distance



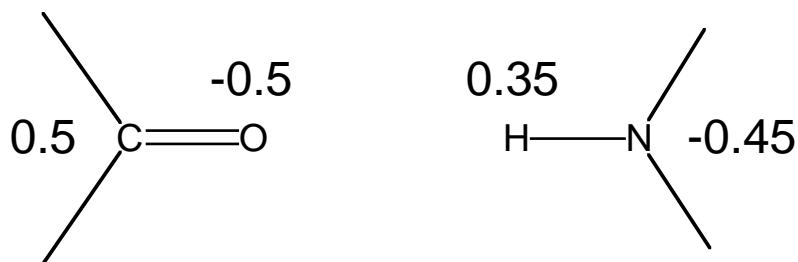
Note that the effect is long range.

Charge Fitting Strategy

CHARMM- Mulliken*

AMBER(ESP/RESP)

Partial atomic charges



*Modifications based on interactions with TIP3 water

CHARMM Potential Function

$$\begin{aligned}
 U(\vec{R}) = & \underbrace{\sum_{\text{bonds}} k_i^{\text{bond}} (r_i - r_0)^2}_{U_{\text{bond}}} + \underbrace{\sum_{\text{angles}} k_i^{\text{angle}} (\theta_i - \theta_0)^2}_{U_{\text{angle}}} + \\
 & \underbrace{\sum_{\text{dihedrals}} k_i^{\text{dihe}} [1 + \cos(n_i \phi_i + \delta_i)]}_{U_{\text{dihedral}}} + \underbrace{\sum_i \sum_{j \neq i} 4 \epsilon_{ij} \left[\left(\frac{\sigma_{ij}}{r_{ij}} \right)^{12} - \left(\frac{\sigma_{ij}}{r_{ij}} \right)^6 \right]}_{U_{\text{nonbond}}} + \sum_i \sum_{j \neq i} \frac{q_i q_j}{\epsilon r_{ij}}
 \end{aligned}$$

PDB file → **geometry** (points to k_i^{bond} , k_i^{angle} , k_i^{dihe})
 Topology PSF file → (points to n_i , δ_i , q_i , q_j)
 Parameter file → **parameters** (points to ϵ_{ij} , σ_{ij} , r_{ij})

File Format/Structure

- The structure of a pdb file
- The structure of a psf file
- The topology file
- The parameter file
- Connection to potential energy terms

Checking file structures

- PDB file
- Topology file
- PSF file
- Parameter file

Parameter Optimization Strategies

Check if it has been parameterized by somebody else

Literature

Google

Minimal optimization

By analogy (i.e. direct transfer of known parameters)

Quick, starting point

Maximal optimization

Time-consuming

Requires appropriate experimental and target data

Choice based on goal of the calculations

Minimal

database screening

NMR/X-ray structure determination

Maximal

free energy calculations, mechanistic studies,

subtle environmental effects

Getting Started

- Identify previously parameterized compounds
- Access topology information – assign atom types, connectivity, and charges – **annotate changes**

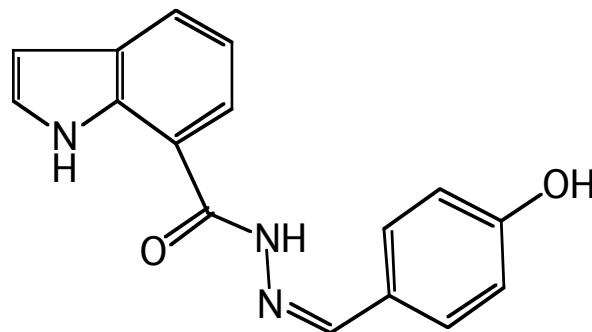
CHARMM topology (parameter files)

top_all22_model.inp (par_all22_prot.inp)
top_all22_prot.inp (par_all22_prot.inp)
top_all22_sugar.inp (par_all22_sugar.inp)
top_all27_lipid.rtf (par_all27_lipid.prm)
top_all27_na.rtf (par_all27_na.prm)
top_all27_na_lipid.rtf (par_all27_na_lipid.prm)
top_all27_prot_lipid.rtf (par_all27_prot_lipid.prm)
top_all27_prot_na.rtf (par_all27_prot_na.prm)
toph19.inp (param19.inp)

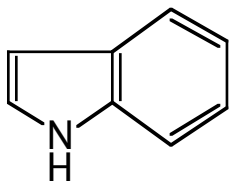
NA and lipid force fields have new LJ parameters for the alkanes, representing increased optimization of the protein alkane parameters. Tests have shown that these are compatible (e.g. in protein-nucleic acid simulations). For new systems is suggested that the new LJ parameters be used. Note that only the LJ parameters were changed; the internal parameters are identical

www.pharmacy.umaryland.edu/faculty/amackere/force_fields.htm

Break Desired Compound into 3 Smaller Ones

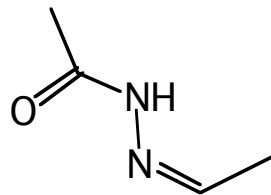


A



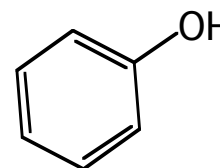
Indole

B



Hydrazine

C



Phenol

When creating a covalent link between model compounds move the charge on the deleted H into the carbon to maintain integer charge (i.e. methyl ($q_C=-0.27$, $q_H=0.09$) to methylene ($q_C=-0.18$, $q_H=0.09$))

From top_all22_model.inp

```
RESI PHEN          0.00  ! phenol, adm jr.
GROUP
ATOM CG    CA    -0.115  !
ATOM HG    HP     0.115  !           HD1  HE1
GROUP      !           |    |
ATOM CD1   CA    -0.115  !           CD1--CE1
ATOM HD1   HP     0.115  !           //    \\
GROUP      !           HG--CG      CZ--OH
ATOM CD2   CA    -0.115  !           \      /      \
ATOM HD2   HP     0.115  !           CD2==CE2      HH
GROUP      !           |    |
ATOM CE1   CA    -0.115  !           HD2  HE2
ATOM HE1   HP     0.115
GROUP
ATOM CE2   CA    -0.115
ATOM HE2   HP     0.115
GROUP
ATOM CZ    CA     0.110
ATOM OH    OH1   -0.540
ATOM HH    H     0.430
BOND CD2 CG CE1 CD1 CZ CE2 CG HG CD1 HD1
BOND CD2 HD2 CE1 HE1 CE2 HE2 CZ OH OH HH
DOUBLE CD1 CG CE2 CD2  CZ CE1
```

Top_all22_model.inp contains all protein model compounds. Lipid, nucleic acid and carbohydrate model compounds are in the full topology files.

HG will ultimately be deleted. Therefore, move HG (hydrogen) charge into CG, such that the CG charge becomes 0.00 in the final compound.

Use remaining charges/atom types without any changes.

Do the same with indole

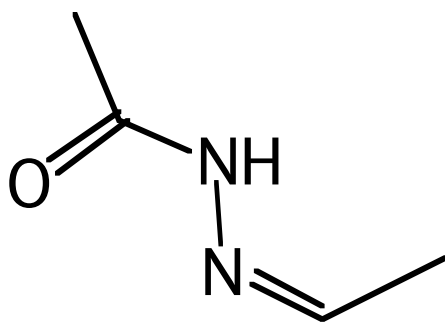
From MacKerell

Creation of topology for central model compound

```

RESI Mod1 ! Model compound 1
Group
ATOM C1 CT3 -0.27
ATOM H11 HA3 0.09
ATOM H12 HA3 0.09
ATOM H13 HA3 0.09
GROUP
ATOM C2 C 0.51
ATOM O2 O -0.51
GROUP
ATOM N3 NH1 -0.47
ATOM H3 H 0.31
ATOM N4 NR1 0.16 !new atom
ATOM C5 CEL1 -0.15
ATOM H51 HEL1 0.15
ATOM C6 CT3 -0.27
ATOM H61 HA 0.09
ATOM H62 HA 0.09
ATOM H63 HA 0.09
BOND C1 H11 C1 H12 C1 H13 C1 C2 C2 O2 C2 N3 N3
H3
BOND N3 N4 C5 H51 C5 C6 C6 H61 C6 H62 C6 H63
DOUBLE N4 C5 (DOUBLE only required for MMFF)

```



Start with alanine dipeptide.
Note use of new aliphatic LJ parameters and, importantly, atom types.

NR1 from histidine unprotonated ring nitrogen. Charge (very bad) initially set to yield unit charge for the group.

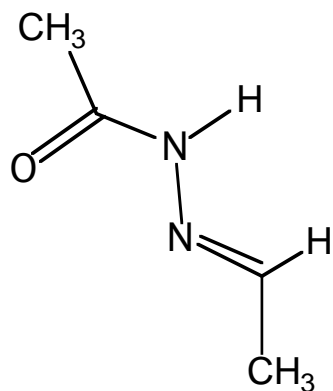
Note use of large group to allow flexibility in charge optimization.

Partial Atomic Charge Determination

Method Dependent Choices

1. RESP: HF/6-31G overestimates dipole moments (AMBER)
2. Interaction based optimization (CHARMM)

For a particular force field do NOT change the QM level of theory. This is necessary to maintain consistency with the remainder of the force field.

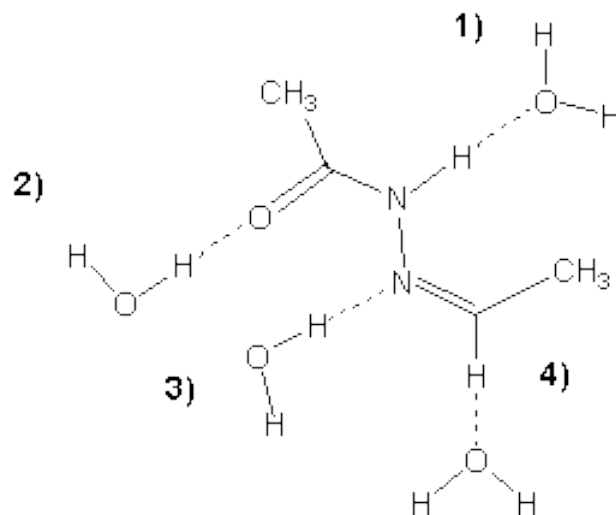


Starting charges??

Mulliken population analysis

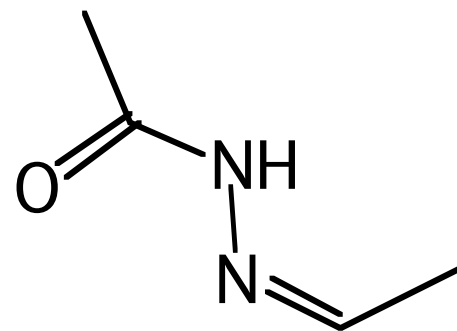
Analogy comparison

Final charges (methyl, vary q_C to maintain integer charge, $q_H = 0.09$)
interactions with water (HF/6-31G*, monohydrates!)

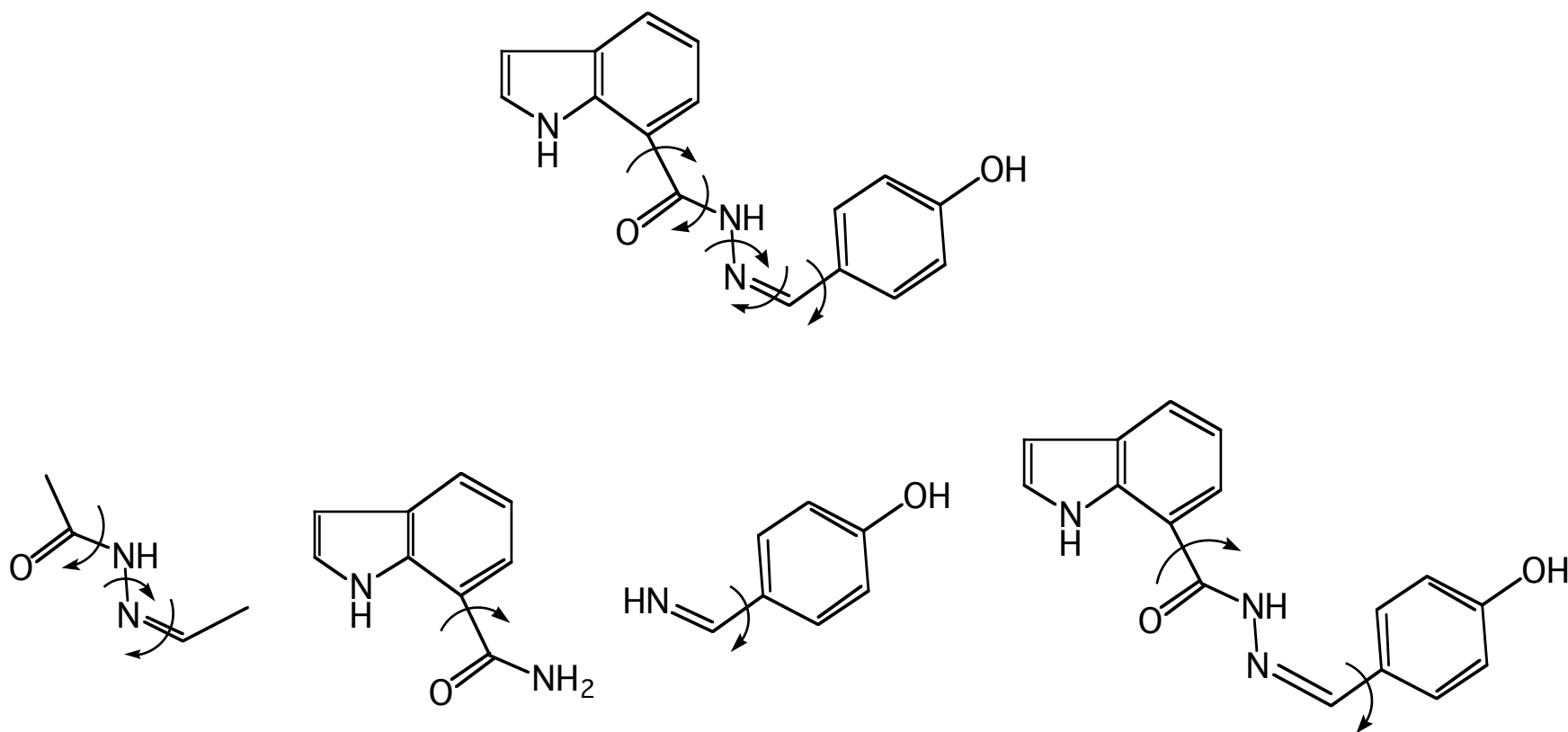


Comparison of analogy and optimized charges

Name	Type	Analogy	Optimized
C1	CT3	-0.27	-0.27
H11	HA3	0.09	0.09
H12	HA3	0.09	0.09
H13	HA3	0.09	0.09
C2	C	0.51	0.58
O2	O	-0.51	-0.50
N3	NH1	-0.47	-0.32
H3	H	0.31	0.33
N4	NR1	0.16	-0.31
C5	CEL1	-0.15	-0.25
H51	HEL1	0.15	0.29
C6	CT3	-0.27	-0.09
H61	HA	0.09	0.09
H62	HA	0.09	0.09
H63	HA	0.09	0.09



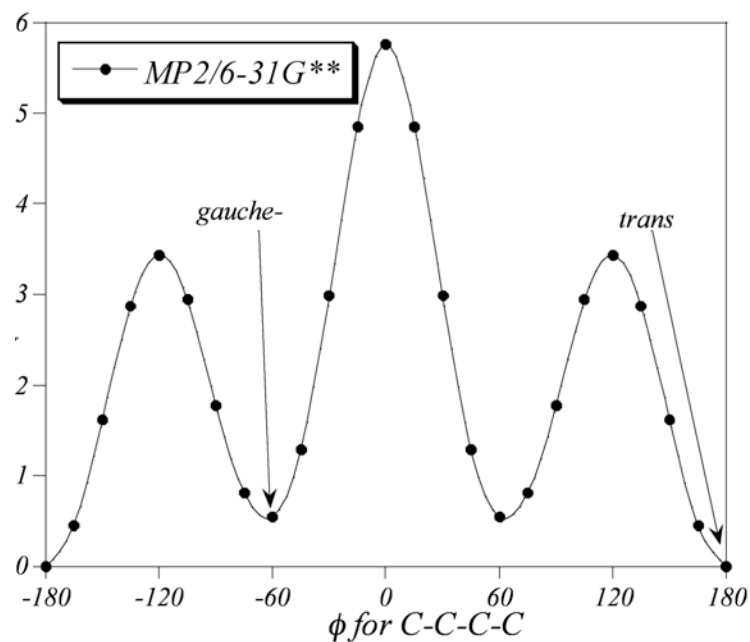
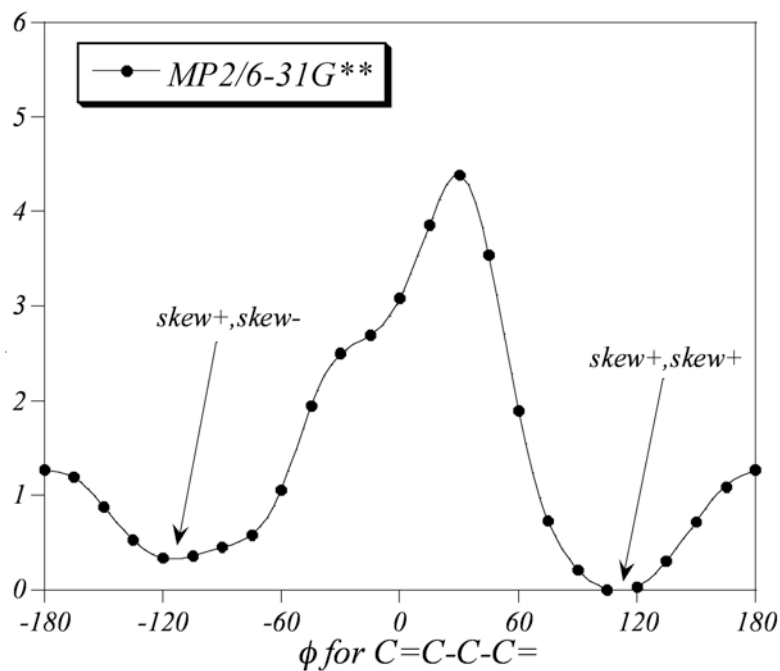
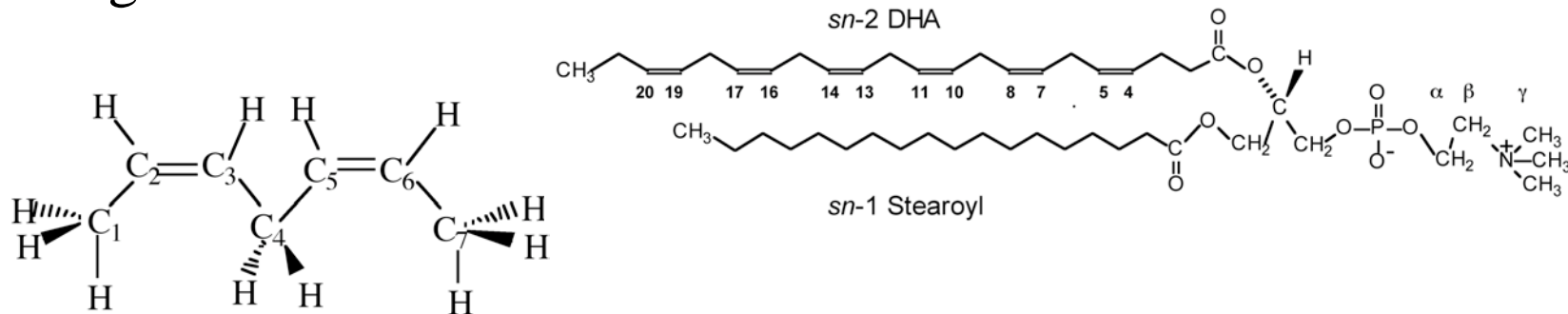
Dihedral optimization based on QM potential energy surfaces (HF/6-31G* or MP2/6-31G*).



From MacKerell

Parameterization of unsaturated lipids

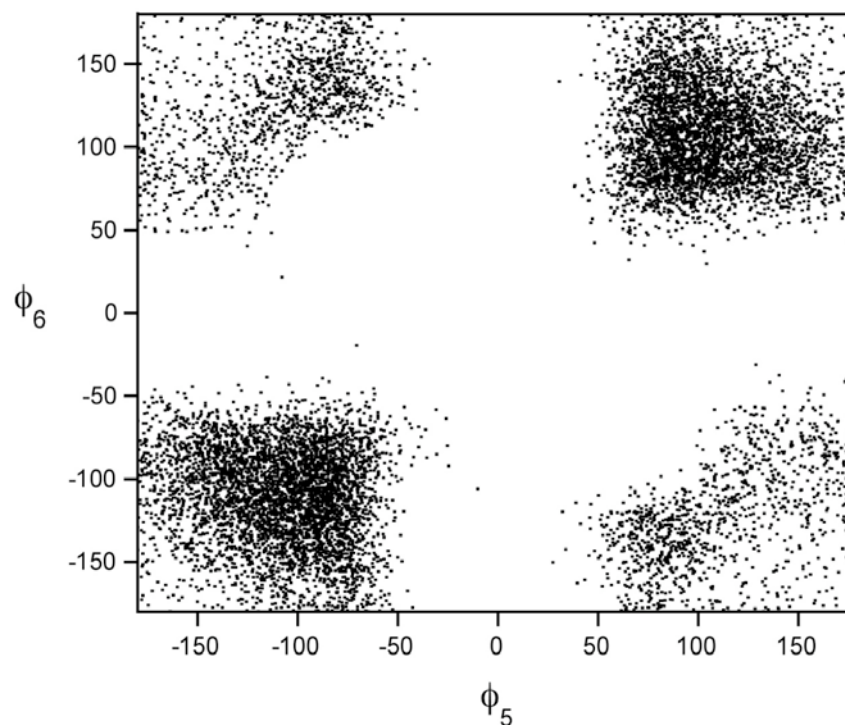
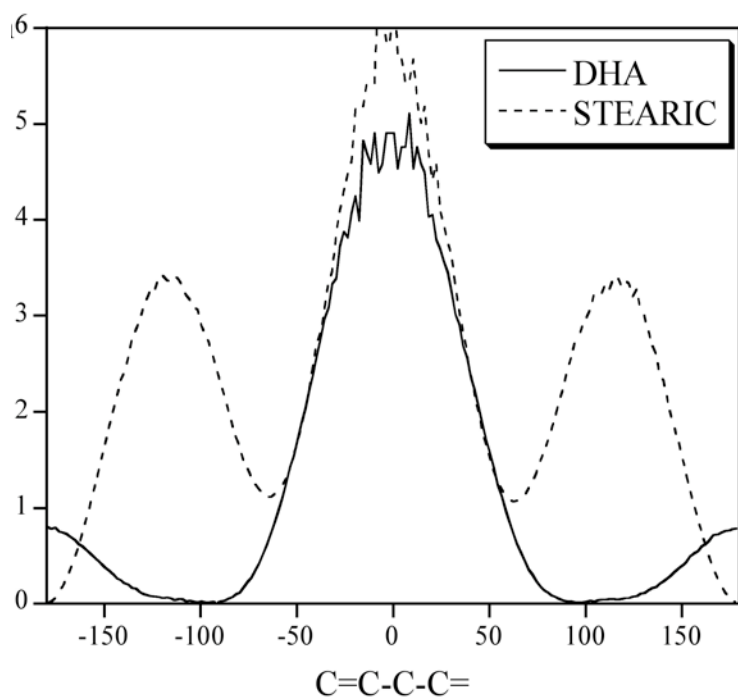
- All C=C bonds are cis, what does rotation about neighboring single bonds look like?



Courtesy of Scott Feller, Wabash College

DHA conformations from MD

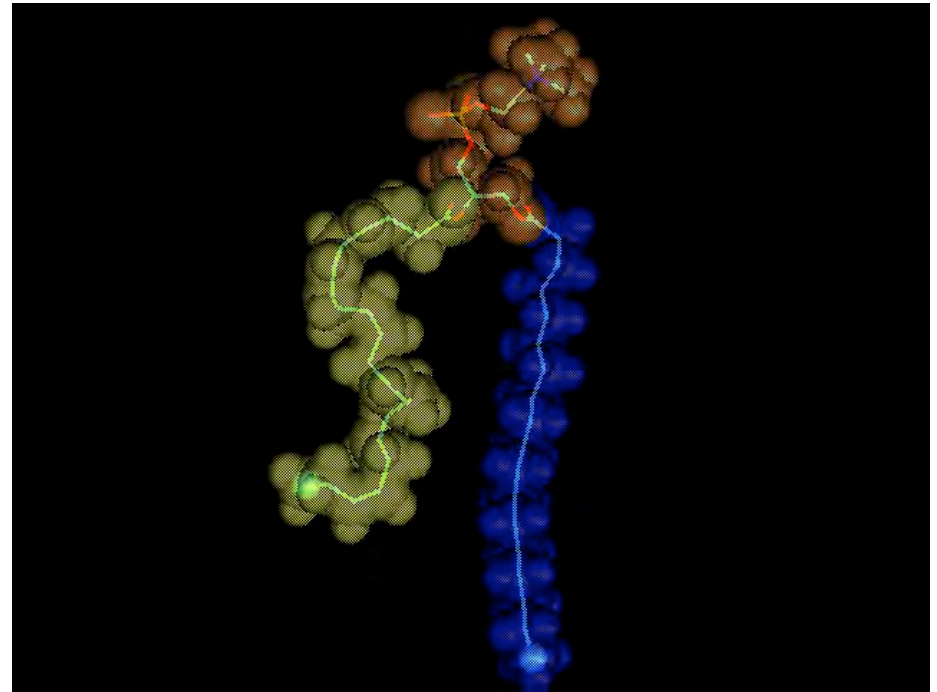
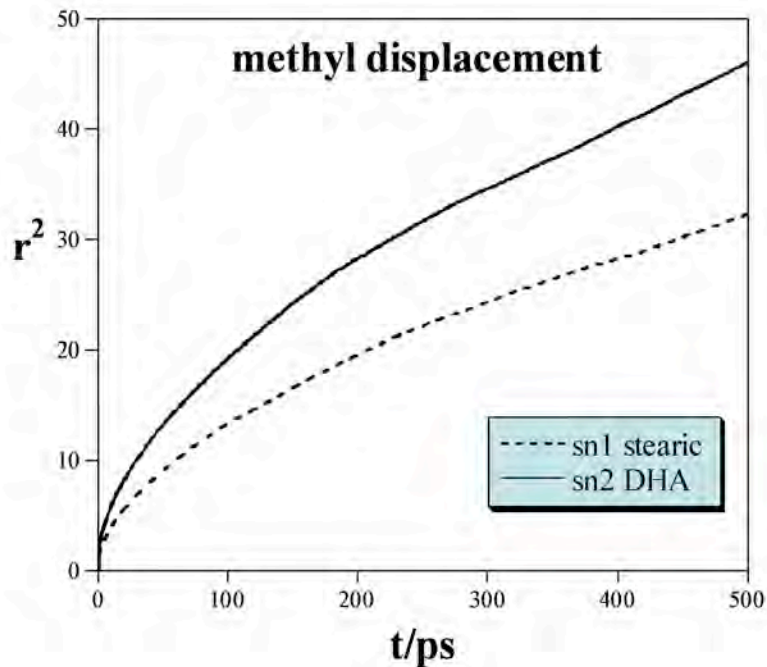
- rotational barriers are extremely small
- many conformers are accessible w/ short lifetimes



Courtesy of Scott Feller, Wabash College

Dynamics of saturated vs. polyunsaturated lipid chains

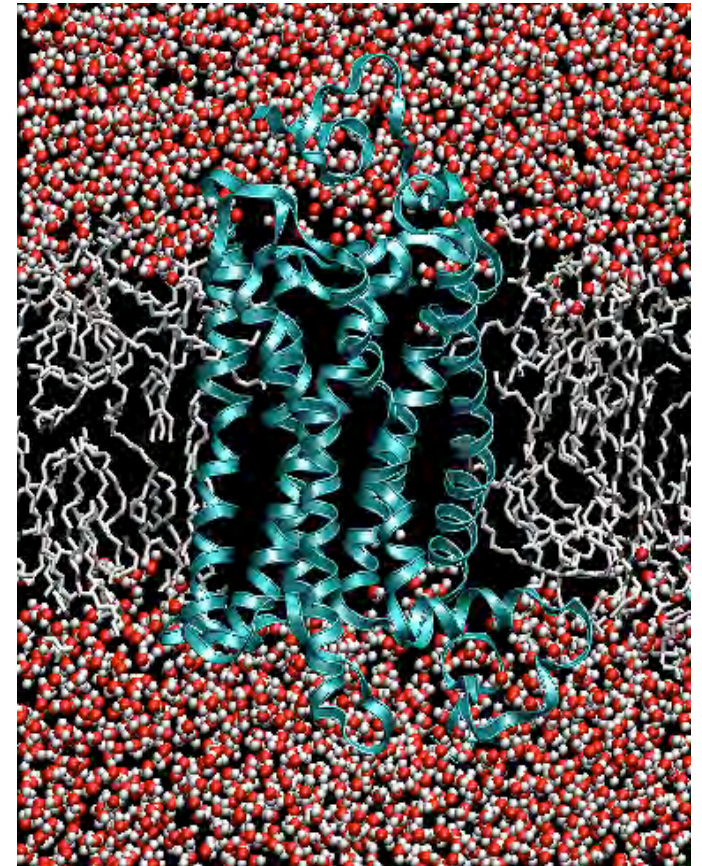
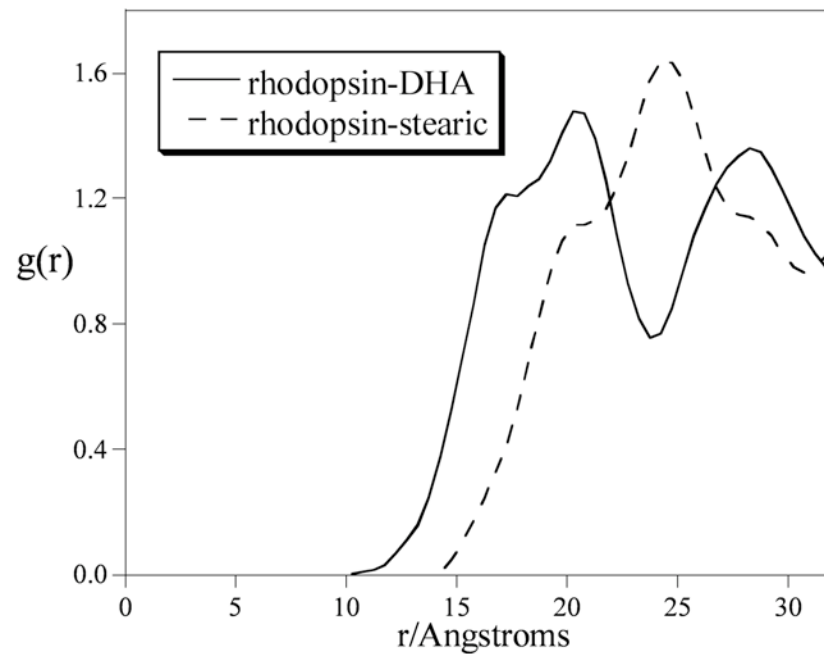
- *sn*1 stearic acid = blue
- *sn*2 DHA = yellow
- 500 ps of dynamics



Movie courtesy of Mauricio Carrillo Tripp

Lipid-protein interactions

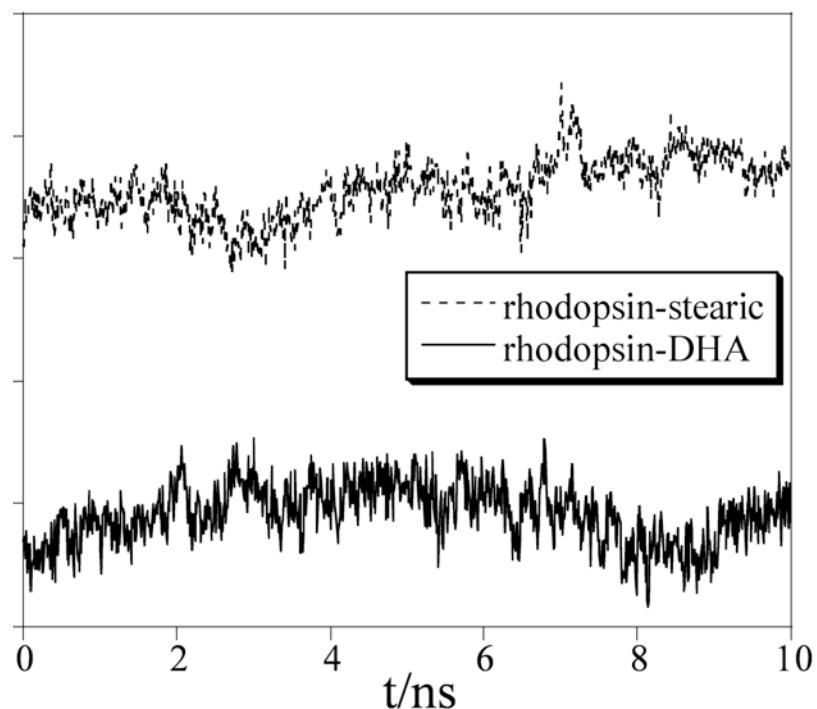
- Radial distribution around protein shows distinct layering of acyl chains



Courtesy of Scott Feller, Wabash College

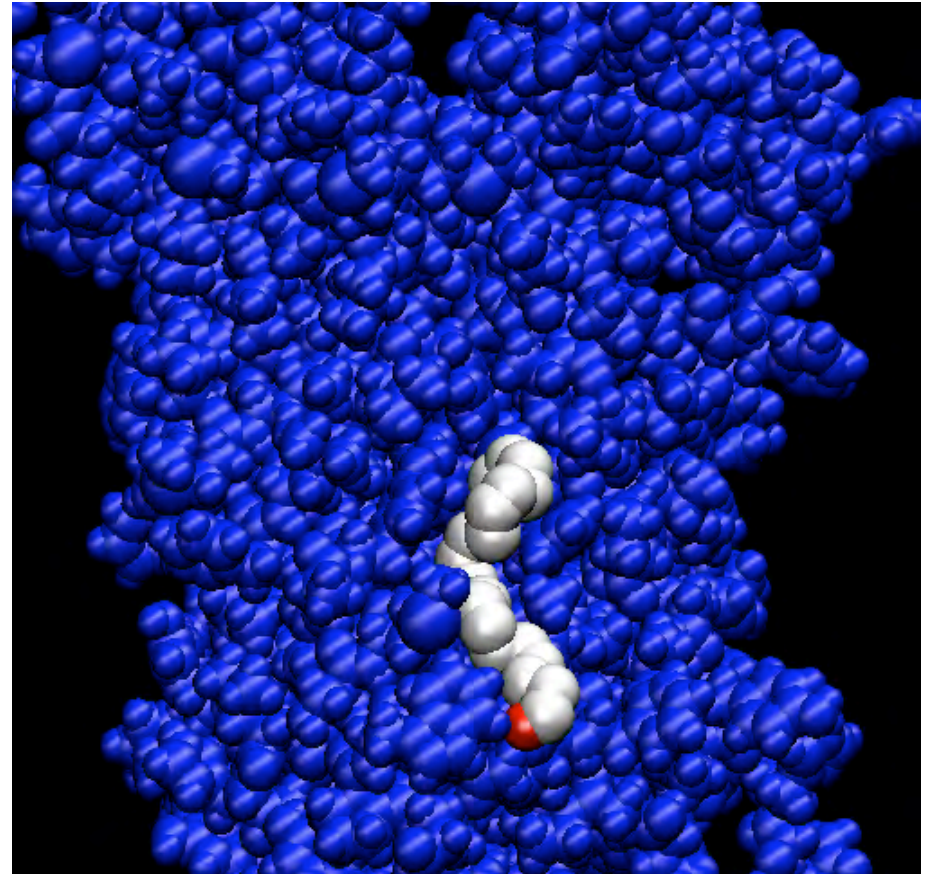
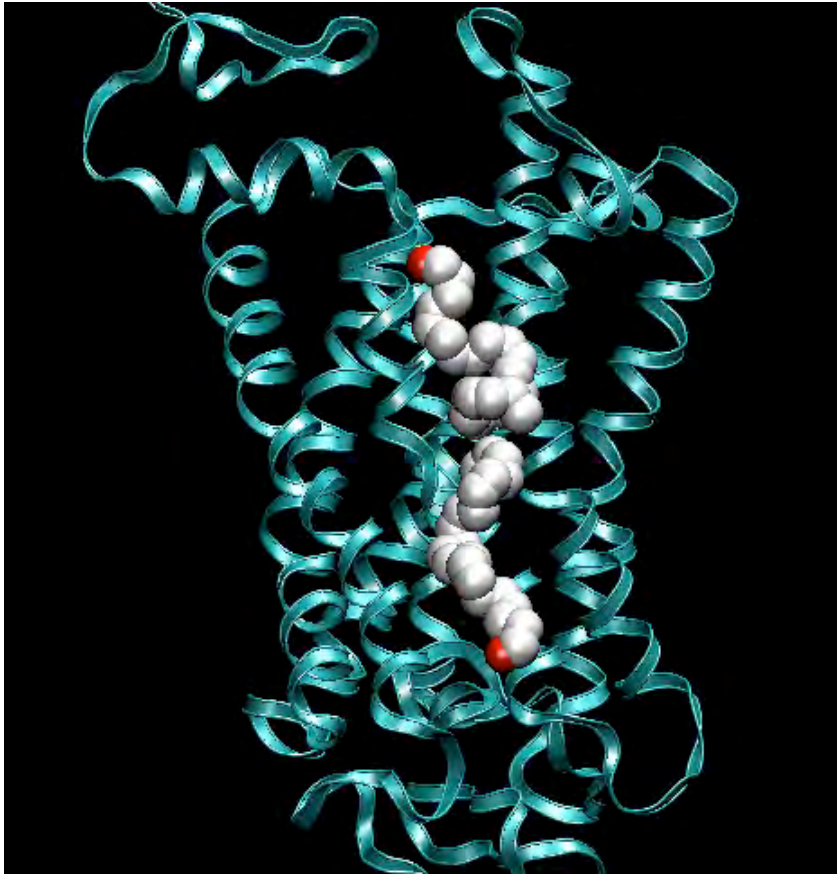
Lipid-protein interactions

- Decomposition of non-bonded interaction shows rhodopsin is strongly attracted to unsaturated chain
- All hydrophobic residues are stabilized by DHA



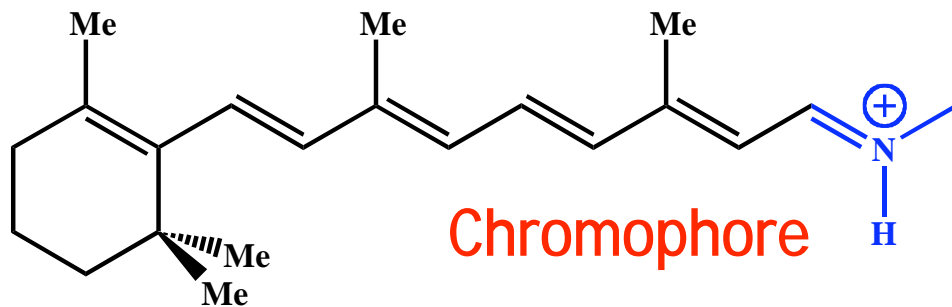
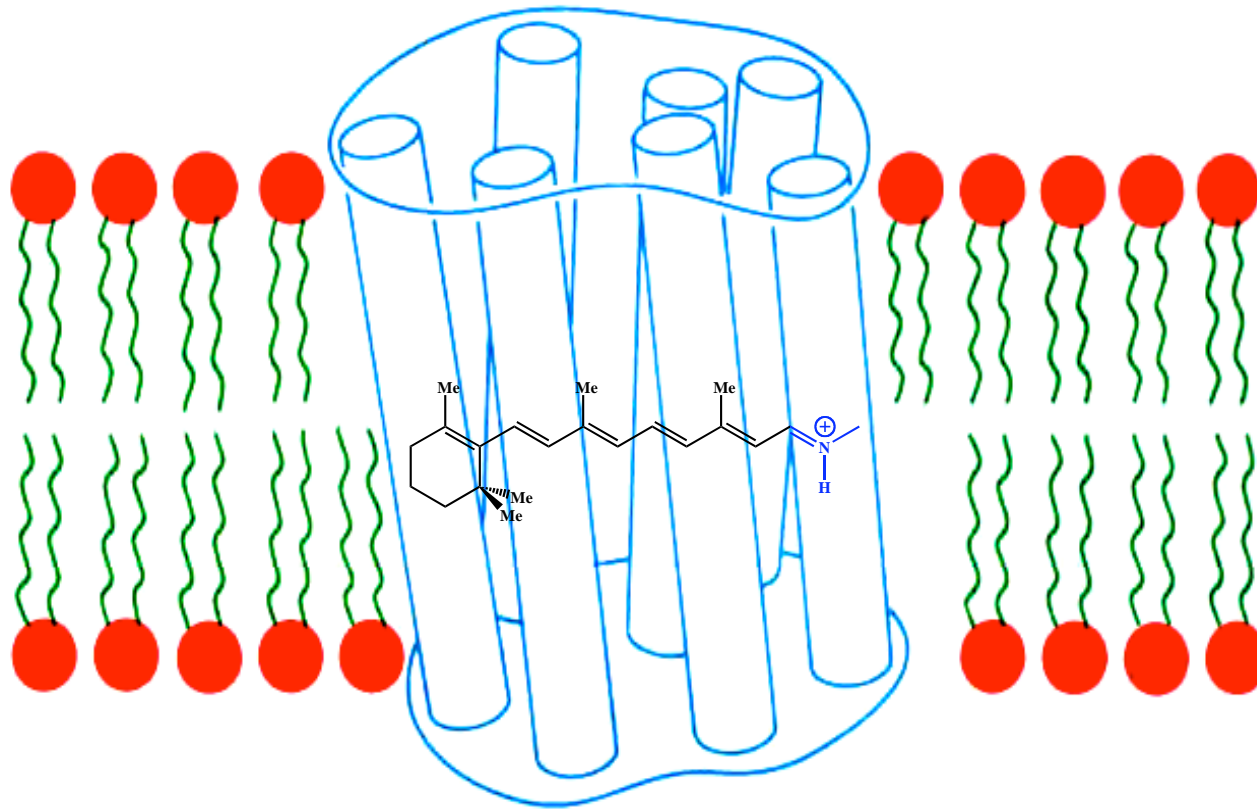
<u>resname</u>	\underline{U}_{DHA}	$\underline{U}_{stearic}$	<u>ratio</u>
PHE	-44.9	-22.6	2.0
ILE	-30.0	-10.1	3.0
VAL	-24.0	-9.6	2.5
LEU	-23.1	-13.0	1.8
MET	-22.8	-9.7	2.4
TYR	-18.6	-10.4	1.8
ALA	-11.4	-3.0	3.8
TRP	-10.3	-2.4	4.2

Origin of protein:DHA attraction



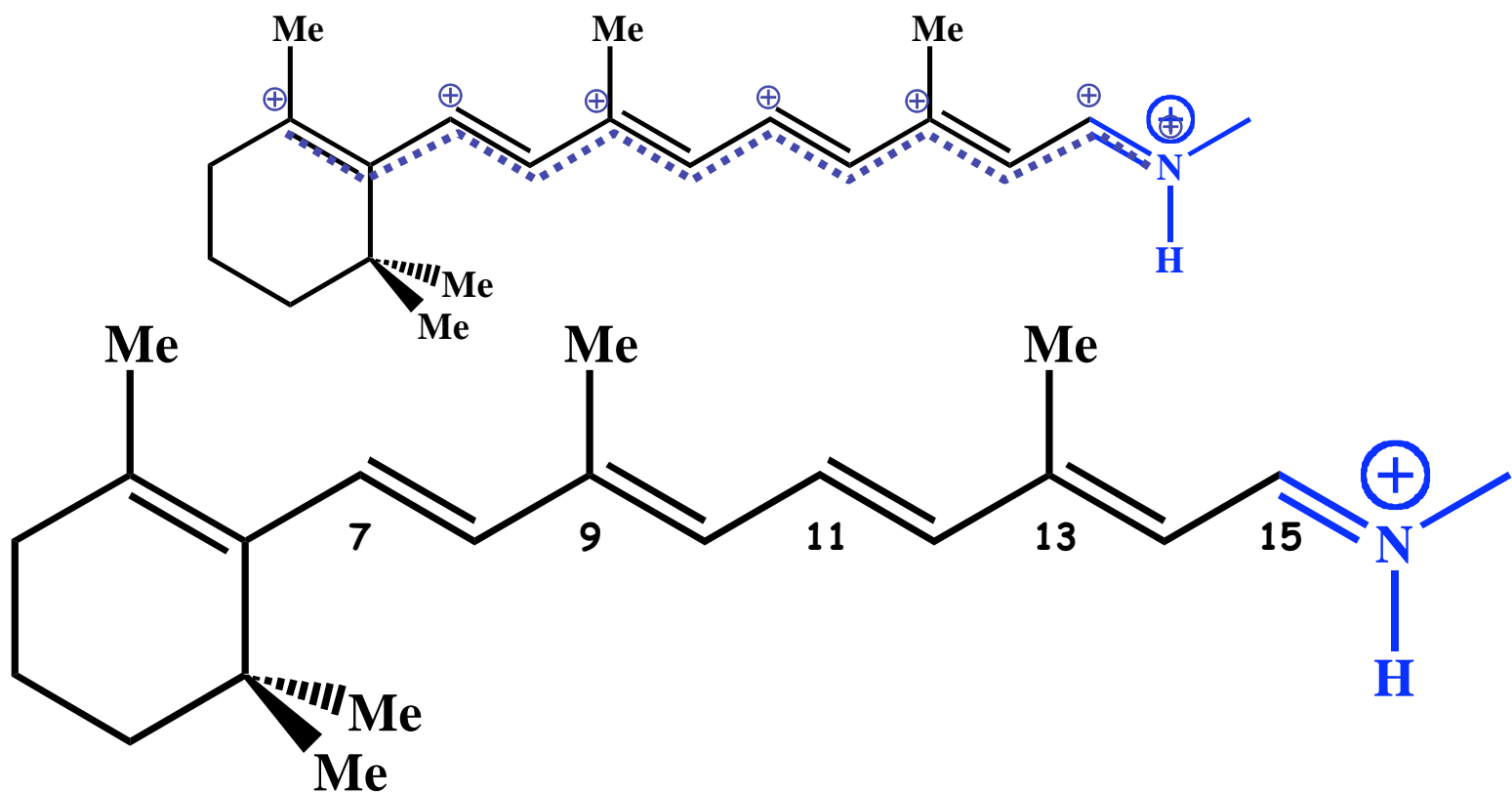
- Flexibility of the DHA chain allows solvation of the rough protein surface to occur with little intra-molecular energy cost

Retinal Proteins -- Rhodopsins

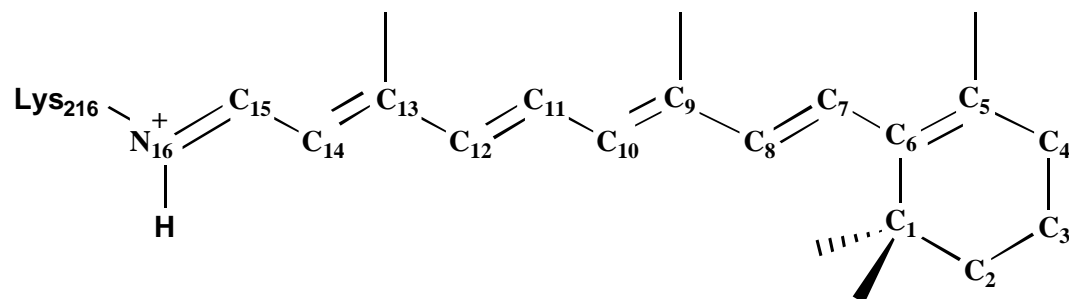


- Covalently linked to a lysine
- Usually protonated Schiff base
- *all-trans* and *11-cis* isomers

Unconventional chemistry



Isomerization Barriers in retinal



DFT/6-31G**

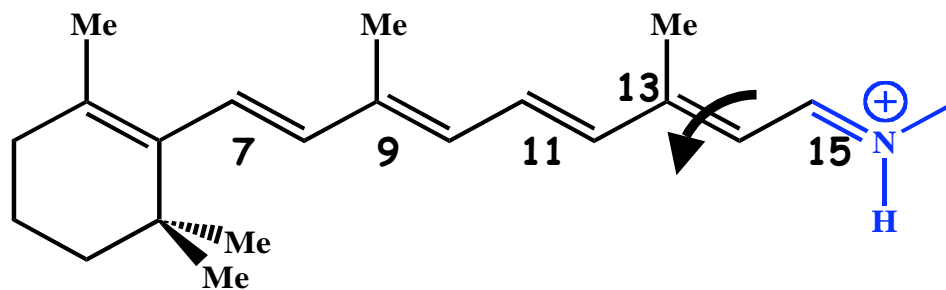
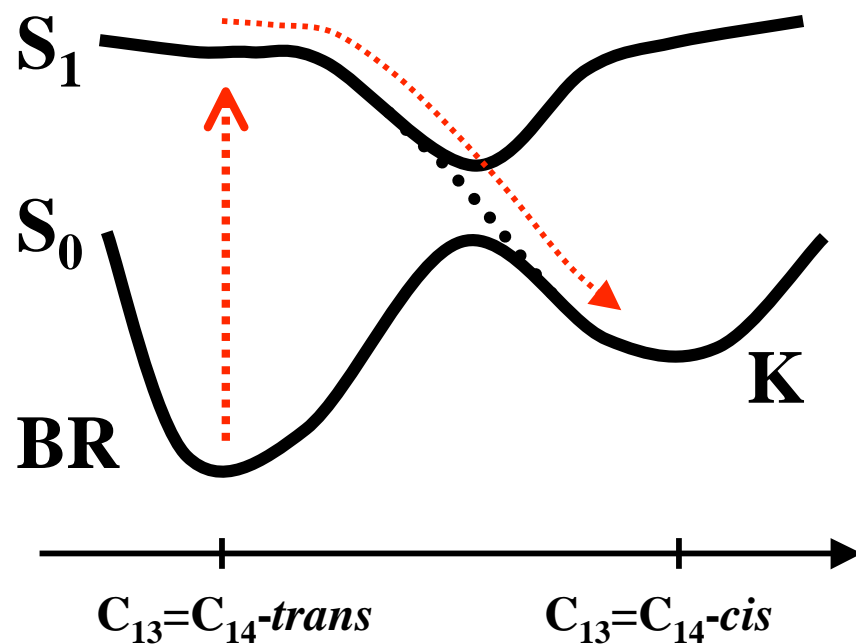
TABLE 2 The parameter set B used for the torsional potentials of the main polyene chain of the retinal Schiff base

ϕ_i	k_i (kcal/mol)*	n_i	δ_i (deg)
$C_5=C_6-C_7=C_8$	11.24	2.0	180.00
$C_6-C_7=C_8-C_9$	39.98	2.0	180.00
$C_7=C_8-C_9=C_{10}$	17.03	2.0	180.00
$C_8-C_9=C_{10}-C_{11}$	37.28	2.0	180.00
$C_9=C_{10}-C_{11}=C_{12}$	22.50	2.0	180.00
$C_{10}-C_{11}=C_{12}-C_{13}$	35.08	2.0	180.00
$C_{11}=C_{12}-C_{13}=C_{14}$	28.30	2.0	180.00
$C_{12}-C_{13}=C_{14}-C_{15}$	29.46	2.0	180.00
$C_{13}=C_{14}-C_{15}=N_{16}$	30.43	2.0	180.00
$C_{14}-C_{15}=N_{16}-C_{\epsilon}$	28.76	2.0	180.00

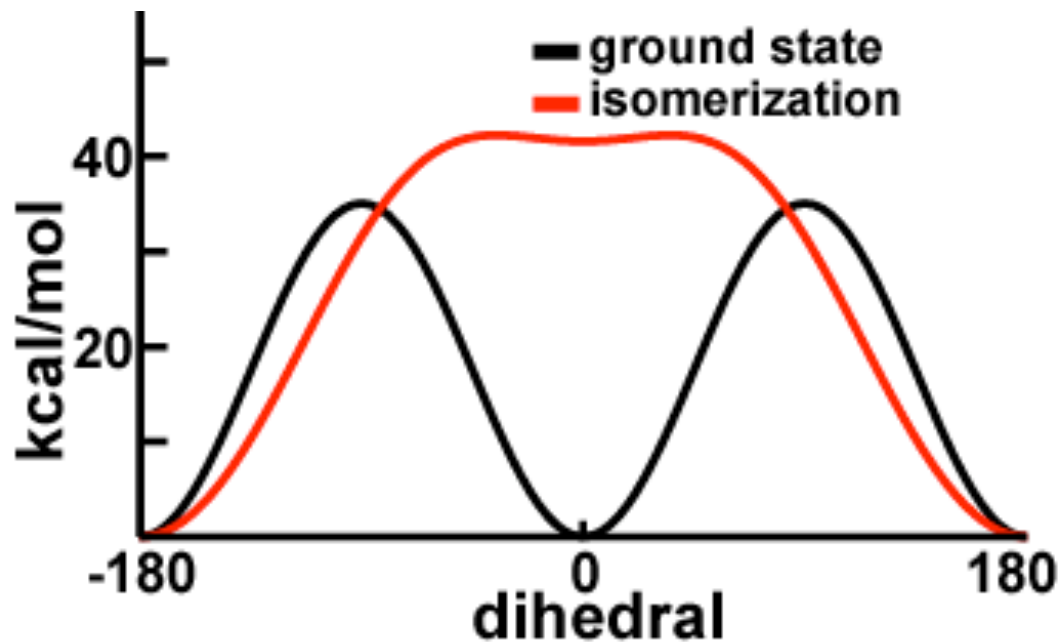
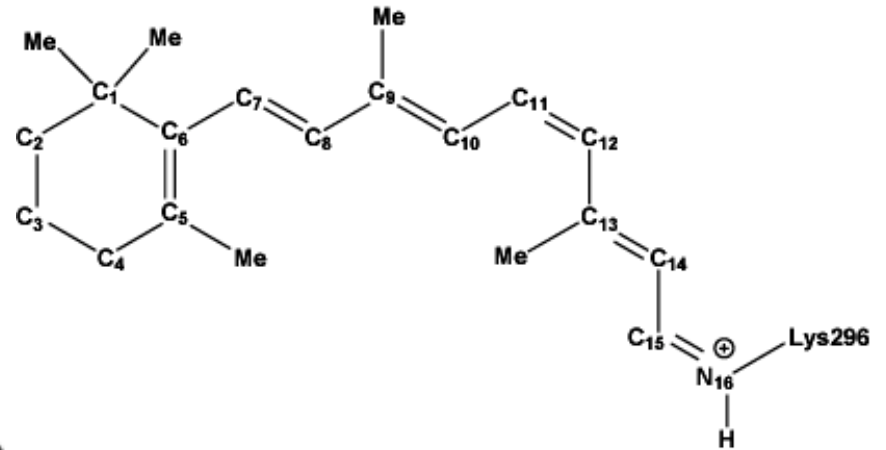
Tajkhorshid et al., 1999.

$$*E_i^{\text{dihedral}} = (1/2)k_i[1 + \cos(n_i\phi_i - \delta_i)].$$

Coupling of electronic excitation and conformational change in bR

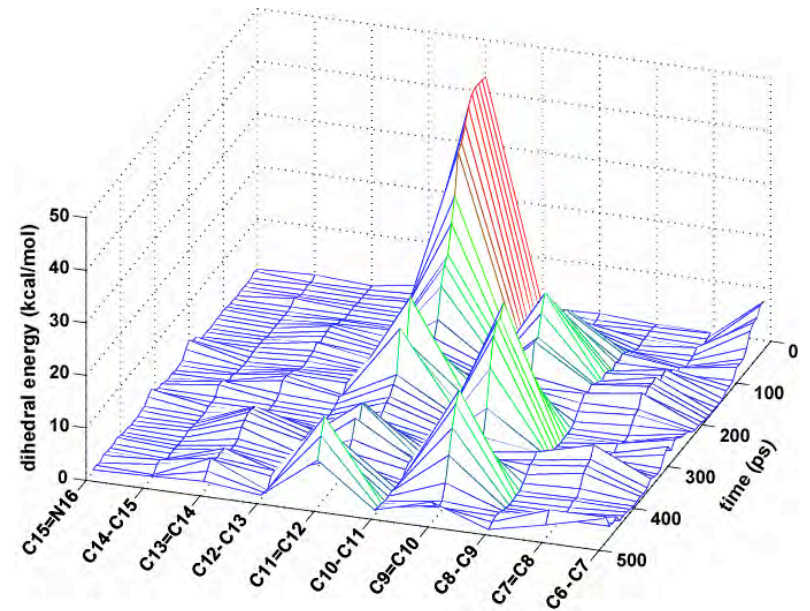
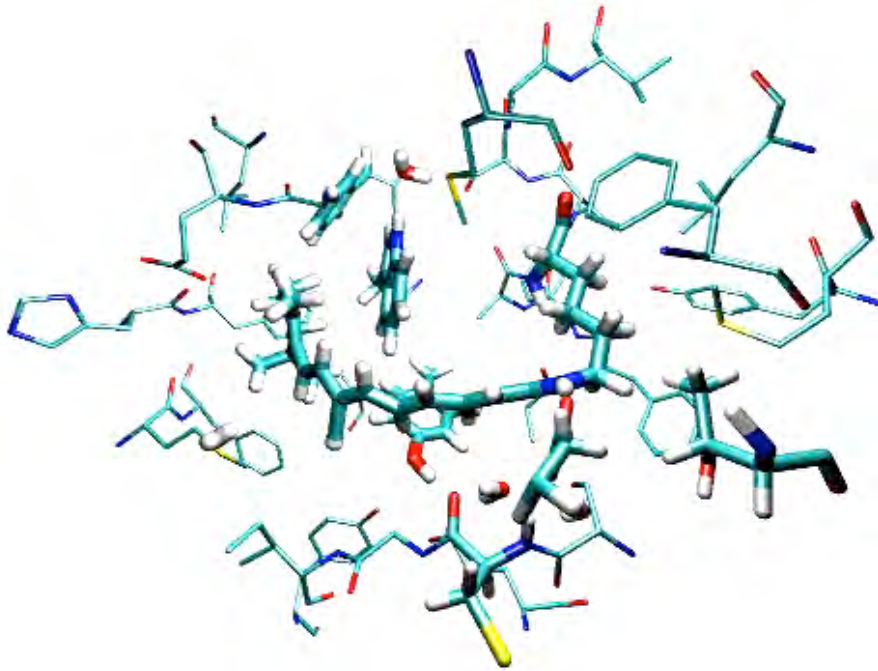


Inducing isomerization



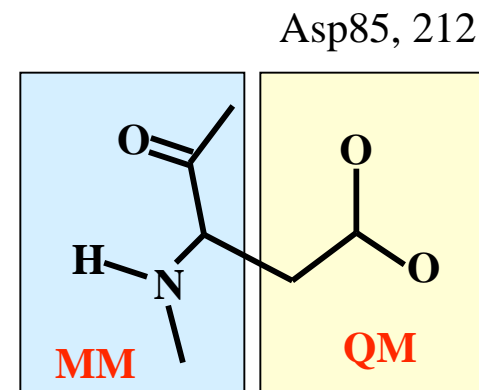
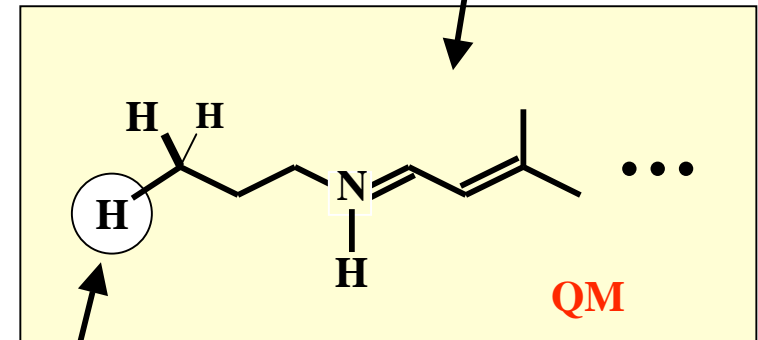
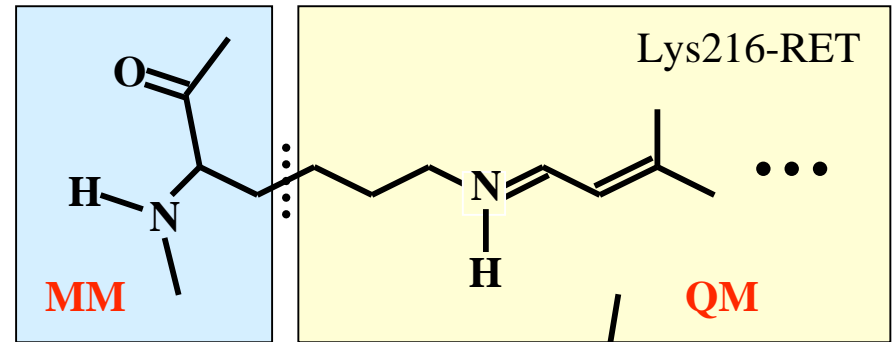
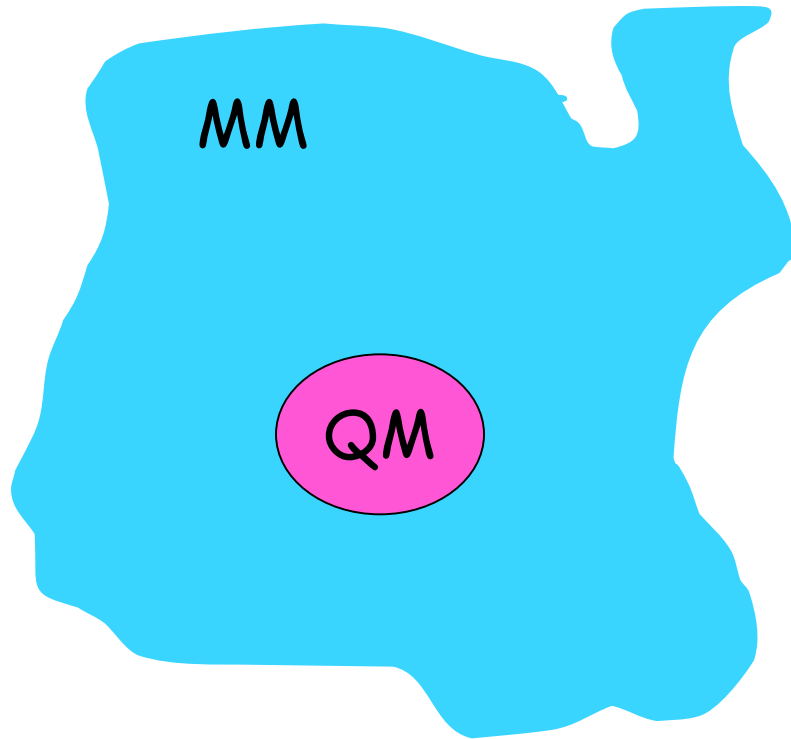
500 nm
~50 kcal/mole

Classical Retinal Isomerization in Rhodopsin



Twist Propagation

QM/MM calculations

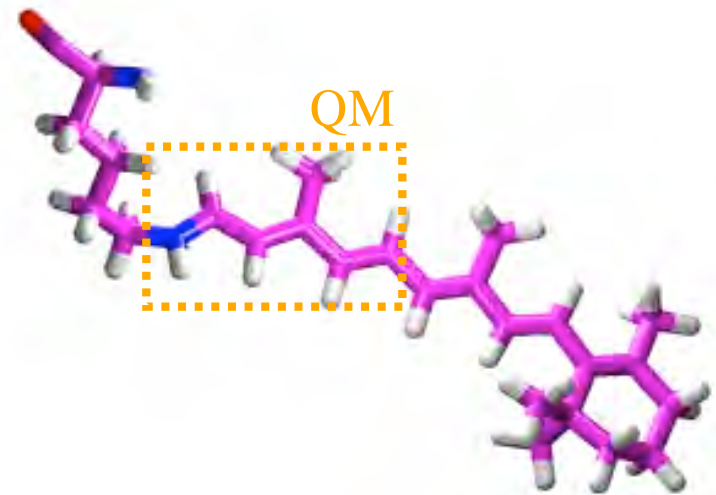
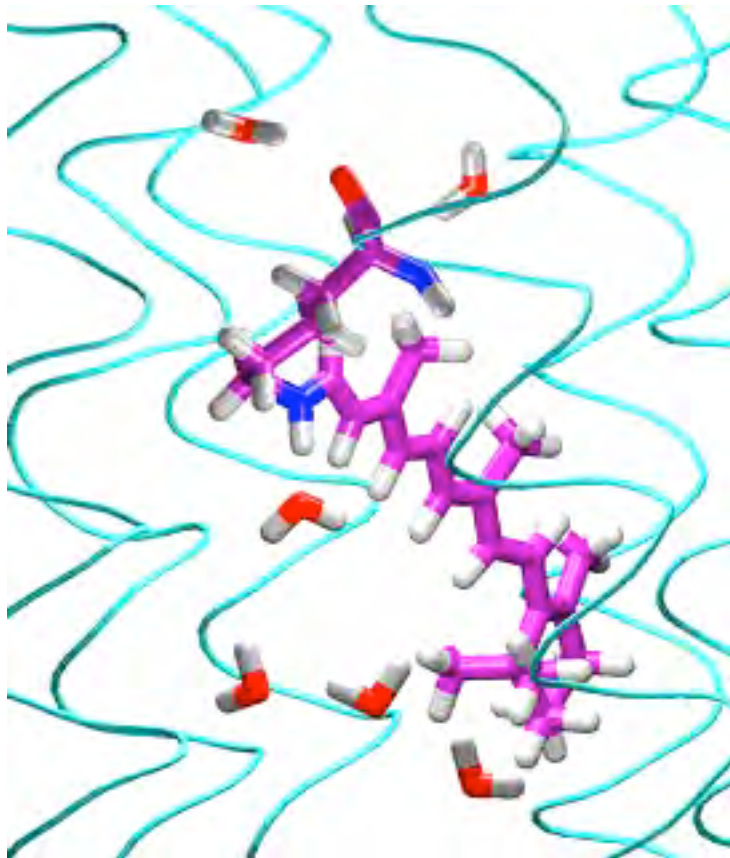


$$\hat{H} = \sum_i \frac{1}{2} p_i^2 + \sum_i \sum_A \frac{Z_A}{r_{iA}} + \sum_{i>j} \frac{1}{r_{ij}} + \sum_{A>B} \frac{Z_A Z_B}{r_{AB}}$$

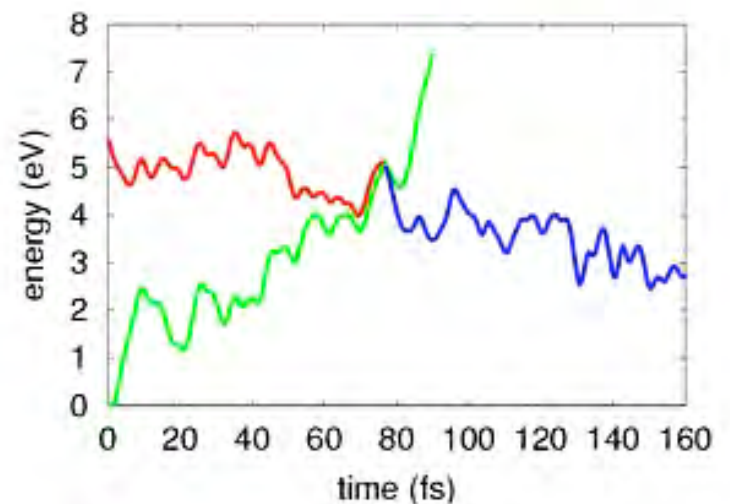
$$+ \sum_i \sum_p \frac{q_p}{r_{ip}} + \sum_A \sum_p \frac{Z_A q_p}{r_{Ap}}$$

$$+ V_{QM-MM}^{MM} + V_{MM}^{MM}$$

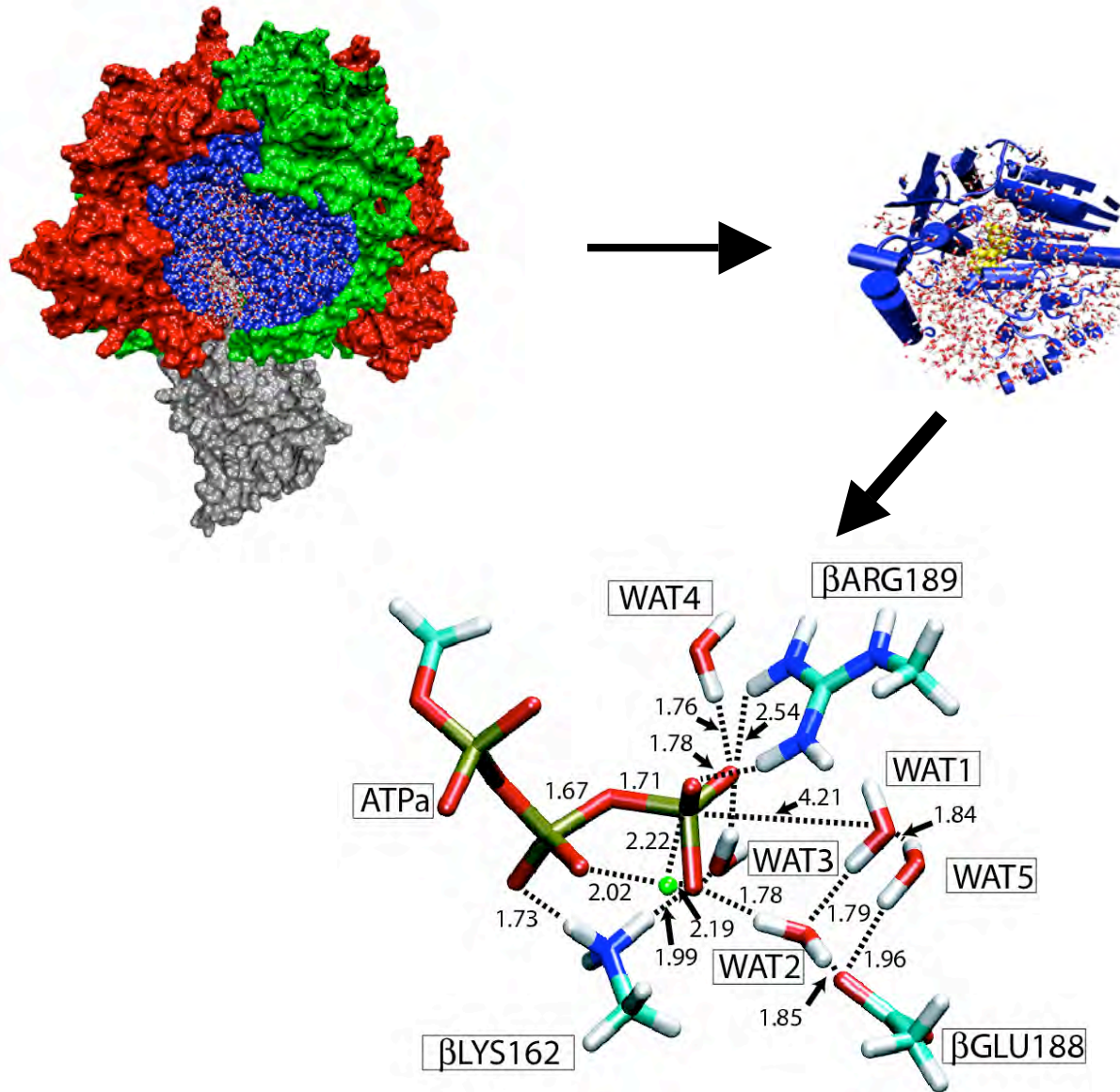
Ab Initio QM/MM Excited State MD Simulation



**Quantum mechanical (QM)
treatment of the chromophore,
and force field (MM) treatment
of the embedding protein**



QM/MM calculation of ATP hydrolysis



Coarse grain modeling of lipids

150 particles



9 particles!

(A)

