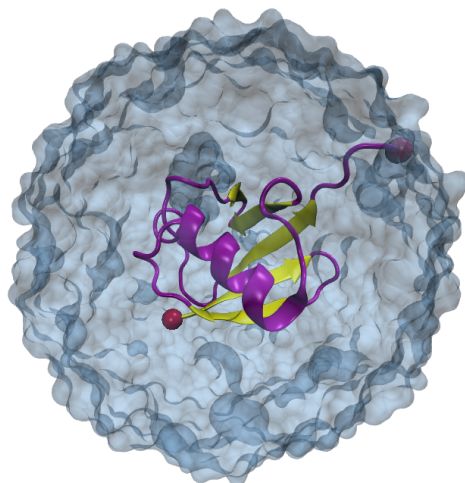


University of Illinois at Urbana–Champaign
NIH Center for Macromolecular Modeling and Bioinformatics
Beckman Institute
Computational Biophysics Workshop

NAMD TUTORIAL

Unix/MacOSX Version



NAMD Developers: James Phillips, David Hardy

NAMD Tutorial Contributors: Tim Isgro, James Phillips, Marcos Sotomayor, Elizabeth Villa, Hang Yu, David Tanner, Yanxin Liu, Zhe Wu, David Hardy

April 2017

A current version of this tutorial is available at
<http://www.ks.uiuc.edu/Training/Tutorials/>
Join the tutorial-1@ks.uiuc.edu mailing list for additional help.

Contents

1	Basics of NAMD	7
1.1	What is Needed	7
1.2	Generating a Protein Structure File (PSF)	7
1.3	Solvating the Protein	12
1.3.1	Ubiquitin in a Water Sphere	12
1.3.2	Ubiquitin in a Water Box	14
1.4	Ubiquitin in a Water Sphere: Simulation with Non-Periodic Boundary Conditions	16
1.4.1	Configuration File	16
1.4.2	Run your Simulation	24
1.5	Ubiquitin in a Water Box: Simulation with Periodic Boundary Conditions	25
1.5.1	Configuration File	25
1.5.2	Run your Simulation	28
1.6	Ubiquitin in Generalized Born Implicit Solvent	29
1.6.1	Configuration File	29
1.6.2	Run your Simulation	30
1.7	Output: Water Sphere Log File	31
1.8	Analysis of Water Sphere Equilibration	33
1.8.1	RMSD for Entire Protein	33
1.8.2	RMSD for Protein without Last 5 Residues	37
2	Analysis	39
2.1	Equilibrium	39
2.1.1	RMSD for individual residues	39
2.1.2	Maxwell-Boltzmann Energy Distribution	42
2.1.3	Energies	46
2.1.4	Temperature distribution	47
2.1.5	Specific Heat	52
2.2	Non-equilibrium	55
2.2.1	Heat Diffusion	55
2.2.2	Temperature echoes	59
3	Steered Molecular Dynamics	72
3.1	Removing Water Molecules	72
3.2	Constant Velocity Pulling	73
3.2.1	Fixed and SMD Atoms	74
3.2.2	Configuration File	77
3.2.3	Running the First SMD Simulation	79
3.3	Constant Force Pulling	80
3.3.1	The SMD Atom	81
3.3.2	Configuration File	82
3.3.3	Running the Second SMD Simulation	83
3.4	Analysis of Results	83

<i>CONTENTS</i>	3
3.4.1 Force Analysis for Constant Velocity Pulling	83
3.4.2 Distance Analysis for Constant Force Pulling	86
4 Acknowledgments	88
A PDB Files	89
B PSF Files	90
C Topology Files	93
D Parameter Files	100
E NAMD Configuration Files	108
F NAMD Standard Output	114
G Water Sphere tcl Script	117

Introduction

This tutorial provides a first introduction to NAMD and its basic capabilities. It can also be used as a refresher course for the non-expert NAMD user.

The tutorial assumes that you already have a working knowledge of VMD and that NAMD 2.8 or later has been installed correctly on your computer. For installation instructions, please refer to the NAMD User's Guide. For the accompanying VMD tutorial go to

<http://www.ks.uiuc.edu/Training/Tutorials/>

The tutorial is subdivided in three sections. The first one covers the basic steps of a molecular dynamics simulation, i.e., preparation, minimization, and equilibration of your system. The second section introduces typical simulation techniques and the analysis of equilibrium properties. The last section deals with *Steered Molecular Dynamics* and the analysis of unfolding pathways of proteins. Finally, brief descriptions of all files needed for the simulations are provided in the appendices.

For a detailed description of NAMD the reader is referred to the NAMD User's guide located at

<http://www.ks.uiuc.edu/Research/namd/current/ug/>

The examples in the tutorial will focus on the study of ubiquitin – a small protein with interesting properties. Throughout the text, some material will be presented in separate “boxes”. Some of these boxes include complementary information to the tutorial, such as information about the biological role of ubiquitin, and tips or shortcuts for using NAMD. These boxes are not required for understanding the tutorial and may be skipped if you are short on time.

Boxes with an exclamation sign are especially important and should not be skipped.



Warning! The goal of this tutorial is to introduce NAMD by performing some short molecular dynamics simulations. Therefore, the examples provided are optimized so simulations can be done in a reasonable period of time on a common computing facility. This means that some parameters and conditions under which simulations are done in this tutorial are not suitable for scientific studies. Whenever this happens it will be pointed out and alternatives or more appropriate parameters/conditions will be provided in case you want to improve the simulations and/or you have more computer power available.



Computer Related Material. To aid in completing this tutorial, a web page of basic UNIX commands has been made available at <http://www.ks.uiuc.edu/Training/Tutorials/Reference/unixprimer.html>.

Required programs

The following programs are required for this tutorial:

- **NAMD:** Available at <http://www.ks.uiuc.edu/Research/namd/> (for all platforms). Note that versions prior to NAMD 2.6 do not support the CMAP correction of the CHARMM forcefield.
- **VMD:** Available at <http://www.ks.uiuc.edu/Research/vmd/> (for all platforms)
- **Text Editor:** Nedit is a text editor which will be used throughout this tutorial to view and edit some of the files associated with the simulations. There are others such as pico, emacs, jot, and vi. Feel free to use whichever text editor you are most comfortable with.
- **Plotting Program:** We will use the free program xmgrace, available at <http://plasma-gate.weizmann.ac.il/Grace/>, to view and analyze output data from NAMD simulations. VMD also has an internal plotting program which may be used to examine output directly from NAMD log files. Other useful graphing programs are Mathematica, <http://www.wolfram.com/> (Purchase required), Matlab, <http://www.mathworks.com/> (Purchase required), and gnuplot, <http://www.gnuplot.info/> (Free download).


Getting Started

- If you are performing this tutorial at a Computational Biophysics Workshop offered by the Theoretical and Computational Biophysics Group, a copy of the files needed for this tutorial have been set up for you. The files exist in the directory called `Workshop` in your home directory. In a Terminal window type:

```
cd ~/Workshop/namd-tutorial/namd-tutorial-files
```

This will place you in the directory containing all the necessary files.

- If you have downloaded this tutorial at home, you will also need to download the appropriate files, unzip them, and place them in a directory of your choosing. You should then navigate to that directory in a similar manner as described directly above. The files for this tutorial are available at <http://www.ks.uiuc.edu/Training/Tutorials/>.



Mac Users. If you have downloaded this tutorial and are not working at a Computational Biophysics Workshop, Mac-specific instructions are provided for you in these boxes. These instructions relate to starting VMD. The tutorial instructs users to start VMD via the command line, but this is only possible on a Mac if the user has set up "aliases" beforehand. Thus, to avoid changing system settings, we recommend you simply follow the instructions in these boxes instead. However, if you are able to set up command line aliases on your computer to launch VMD, you may do so and then ignore these boxes.

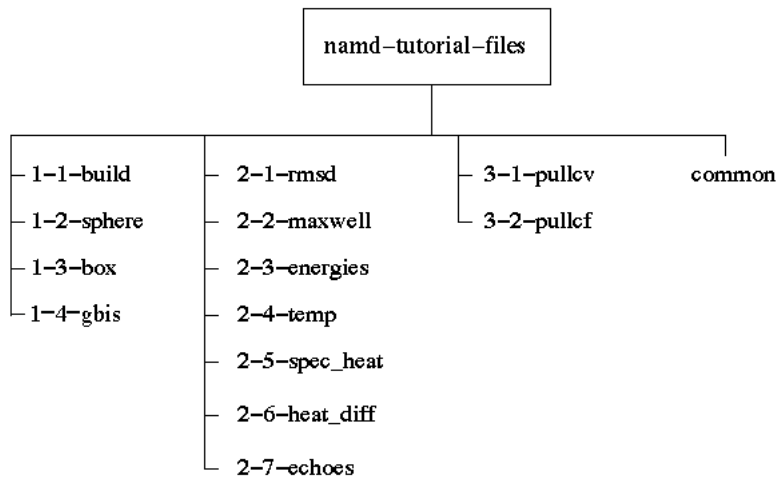


Figure 1: Directory Structure for tutorial exercises. Output for all simulations is provided in an "example-output" subdirectory within each folder shown.

1 Basics of NAMD

In this section you will learn how to use NAMD to set up basic molecular dynamics (MD) simulations. You will learn about typical NAMD input and output files, in particular, those for protein energy minimization and equilibration in water.

NOTE: You will be generating output data in this section by performing simulations and using other features of NAMD. These files are needed for Units 2 and 3. If you are not able to produce the output, correct versions have been provided for each section and may be found in the `example-output` folder inside the directory corresponding to the given simulation or exercise.

1.1 What is Needed

In order to run any MD simulation, NAMD requires at least four things:

- a Protein Data Bank (pdb) file which stores atomic coordinates and/or velocities for the system. Pdb files may be generated by hand, but they are also available via the Internet for many proteins at <http://www.pdb.org>. More in Appendix A.
- a Protein Structure File (psf) which stores structural information of the protein, such as various types of bonding interactions. More in Appendix B.
- a force field parameter file. A force field is a mathematical expression of the potential which atoms in the system experience. CHARMM, X-PLOR, AMBER, and GROMACS are four types of force fields, and NAMD is able to use all of them. The parameter file defines bond strengths, equilibrium lengths, etc. More in Appendix D.
- a configuration file, in which the user specifies all the options that NAMD should adopt in running a simulation. The configuration file tells NAMD how the simulation is to be run. More in Appendix E.



Force Field Topology File. Later, you will make a psf file for your system. In doing so, a force field topology file is necessary. This file contains information on atom types, charges, and how the atoms are connected in a molecule. Note that the pdb file contains only coordinates, but not connectivity information! More in Appendix C.

1.2 Generating a Protein Structure File (PSF)

Of the four files mentioned above, an initial pdb file will typically be obtained through the Protein Data Bank, and the parameter and topology files for a given class of molecule may be obtained via the Internet at

http://mackerell.umaryland.edu/charmm_ff.shtml.

Notice that the latest release (c31b1) also contains the updated CMAP correction, used in this tutorial. The psf file must be created by the user from the initial pdb and topology files. The NAMD configuration file is also created by the user, with commands based on the specific requirements for the MD simulation.



CMAP. CMAP is an energy correction map based on quantum mechanical calculations and is one of the latest additions to the CHARMM force field. It improves protein backbone behavior and thus yields more accurate dynamic properties for the protein. For example, CHARMM22 with CMAP gives the experimentally observed α -helix while the CHARMM22 force field without CMAP gives a π -helix for certain model peptides. More in Appendix D.

- 1 Go to the 1-1-build directory. In a Terminal window, you can change directories using the `cd` command. Type `cd 1-1-build`. You can see the contents of the directory you are in by typing `ls`. In this folder, you will find many files that you will use later.

First, you will remove the water molecules from `1UBQ.pdb`, and create a pdb file of the protein alone.

- 2 Open VMD by typing `vmd` in the Terminal window.

```
namd-tutorial-files/1-1-build> vmd
```

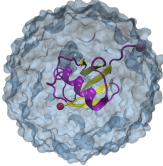


Launch VMD. Open VMD graphically by double-clicking on the VMD icon under Applications in the Finder. Then, navigate to the 1-1-build directory by using the `cd` command in the VMD command terminal. For instance, if you placed the tutorial files in your home directory in a folder called `Workshop`, you would type:

```
cd ~/Workshop/namd-tutorial/namd-tutorial-files
```

- 3 Load `1UBQ.pdb` by clicking `File` → `New Molecule...` menu item in the VMD Main window. In the Molecule File Browser use the `Browse...` button to find the file `1UBQ.pdb`. Load it by pressing the `Load` button.

Note that the X-ray structure from the Protein Data Bank does not contain the hydrogen atoms of ubiquitin. This is because X-ray crystallography usually cannot resolve hydrogen atoms. The pdb file you will generate with `psfgen` along with the psf will contain guessed coordinates for hydrogen atoms of the structure. Later, energy minimization of the protein will ensure their positions are reasonable.



X-ray Crystallography. X-ray crystallography methods utilize the optical rule that electromagnetic radiation will interact most strongly with matter the dimensions of which are close to the wavelength of that radiation. X-rays are diffracted by the electron clouds in molecules, since both the wavelength of the X-rays and the diameter of the cloud are on the order of Angstroms. The diffraction patterns formed when a group of molecules is arranged in a regular, crystalline array, may be used to reconstruct a 3-D image of the molecule. Hydrogen atoms, however, are not typically detected by X-ray crystallography since their sizes are too small to interact with the radiation and since they contain only a single electron. The best X-ray crystallography resolutions currently available are around 0.9Å.

- 4 Choose the Extensions → Tk Console menu item and in the VMD TkCon window. Be sure you are in the 1-1-build directory. If you are not, navigate there using the `ls` command to list files and directories and the `cd` command to change directories. Then, type the following commands:

```
set ubq [atomselect top protein]
$ubq writepdb ubqp.pdb
```

(Hit the Return key after each command.)

In the previous step you have created the file `ubqp.pdb`, which contains the coordinates of the ubiquitin alone without hydrogens, in the 1-1-build directory.

- 5 Quit VMD by choosing File → Quit.

- 6 Now, you will create the psf file of ubiquitin. Note that VMD offers an automatic psf file builder via the VMD Main menu by clicking Extensions → Modeling → Automatic PSF Builder. We will create the psf file manually to teach you exactly how it is done. The `psfgen` package of VMD is very useful in this regard. In order to create a psf, you will first make a pgn file, which will be the target of `psfgen`.

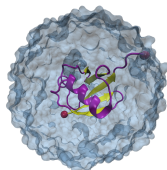
In a Terminal window type `nedit` to open the text editor. Type in the following lines:

```
package require psfgen
topology top_all27_prot_lipid.inp
pdbalias residue HIS HSE
pdbalias atom ILE CD1 CD
segment U {pdb ubqp.pdb}
coordpdb ubqp.pdb U
guesscoord
writepdb ubq.pdb
writepsf ubq.psf
```

- 7 After typing this, save the file by clicking File → Save. Be sure that you are in the 1-1-build directory and enter the file name as `ubq.pgn`. Quit the text editor by clicking File → Exit.

The file you just created contains the necessary commands to create the psf file of ubiquitin with hydrogen atoms and without water. Each command of the pgn file is explained:

- Line 1: You will be running `psfgen` within VMD. This line requires that the `psfgen` package is available to be called by VMD.
- Line 2: Load the topology file `top_all127_prot_lipid.inp`
- Line 3: Change the residue name of histidine to the proper name found in the topology file. HSE is one of three names for histidine, based on the protonation state of its side group. See the science box below for more information.
- Line 4: The atom named "CD1" (δ carbon) in isoleucine residues is renamed as "CD", its proper name from the topology file. Since isoleucine contains only one δ carbon atom, the psf file does not use the number label after "CD".
- Line 5: A segment called U is created, containing all atoms from `ubqp.pdb`. The `segment` command also adds hydrogen atoms.
- Line 6: Coordinates are read from `ubqp.pdb` and residue and atom names are matched. Old segment labels will be overridden with the new segment label "U".
- Line 7: Coordinates of missing atoms (like hydrogens) are guessed based on residue definitions from the topology file.
- Line 8: A new pdb file with the complete coordinates of all atoms, including hydrogens, is written.
- Line 9: A psf file with the complete structural information of the protein is written.



Histidine Residues. Of the 20 amino acids, histidine is the only one which ionizes within the physiological pH range (~ 7.4). This effect is characterized by the pK_a of the amino acid side chain. For histidine, the value is 6.04. This leads to the possibility of different protonation states for histidine residues in a protein, and makes the consideration of the proper state important in MD simulations. The viable states are one in which the δ nitrogen of histidine is protonated (listed with residue name "HSD" in the topology file), one in which the ϵ nitrogen of histidine is protonated ("HSE"), and one in which both nitrogens are protonated ("HSP").

8 In a Terminal window (again, be sure that you are in the 1-1-build directory), type the following command:

```
> vmd -dispdev text -e ubq.pgn
```

This will run the package `psfgen` on the file `ubq.pgn` and generate the `psf` and the `pdb` file of ubiquitin with hydrogens.



Launch VMD in text mode. Open VMD in text mode and run the package `psfgen` on the file `ubq.pgn` by typing the following command in a Terminal window in the 1-1-build directory:

```
/Applications/VMD\ <version>.app/Contents/vmd/vmd_MACOSX  
-dispdev text -e ubq.pgn
```

Substitute the version number of VMD installed on your machine for "`<version>`".

In your screen you will see different messages. Warnings are related to the ends of your molecule and are normal. Your system should have 1231 atoms and 631 with guessed coordinates.

9 Type `exit` in the Terminal to exit VMD.

Having run `psfgen`, two new files will now appear in your 1-1-build directory: `ubq.pdb` and `ubq.psf`. Check this by typing `ls` in a Terminal. You have created the `psf`! You may want to inspect `ubq.pdb` using `nedit`.



Multiple Chains. Often, `pdb` files will contain structural information for polymers of proteins. Each monomer is typically labeled as a separate chain in the `pdb` file. Chain ID is indicated in the column of the `pdb` after the residue name. In those cases, you can use VMD to make separate `pdb` files for each chain, using the following commands in the VMD TkCon window:

```
set chainA [atomselect top "chain A"]  
$chainA writepdb chainA.pdb
```

These commands should be used for each chain in the system. The `psfgen` package requires a `pdb` file for each chain.

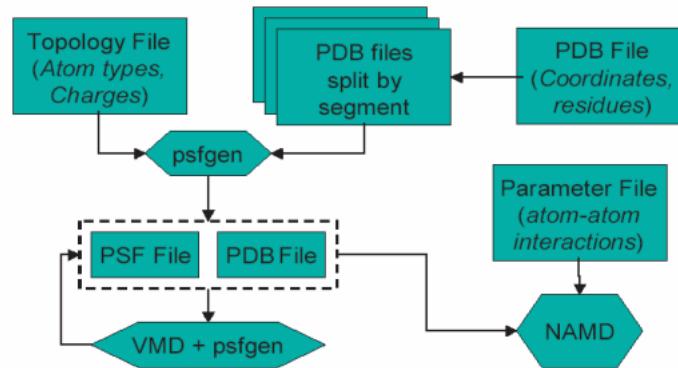


Figure 2: Flowchart indicating the role of files as used by VMD, NAMD, and psfgen.

1.3 Solvating the Protein

Now, the protein needs to be solvated, i.e., put inside water, to more closely resemble the cellular environment. You will do so in two ways, placing ubiquitin in:

- a water sphere in surrounding vacuum, in preparation for minimization and equilibration without periodic boundary conditions.
- a water box, in preparation for minimization and equilibration with periodic boundary conditions.

1.3.1 Ubiquitin in a Water Sphere

You will utilize a prepared tcl script to create the water sphere. It is called `wat_sphere.tcl` and is located in your `1-1-build` directory. The syntax of the script itself is given in Appendix G.

- 1 In a Terminal window in your `1-1-build` directory, type

```
vmd -dispdev text -e wat_sphere.tcl
```

This will call the script, which will place ubiquitin in the smallest possible water sphere which completely immerses the protein.



Launch VMD in text mode. Open VMD in text mode and run the script `wat_sphere.tcl` by typing the following command in a Terminal window in the `1-1-build` directory:

```
> /Applications/VMD\ <version>.app/Contents/vmd/vmd_MACOSX
-dispdev text -e wat_sphere.tcl
```

Substitute the version number of VMD installed on your machine for "`<version>`".



Water Sphere. The creation of a water sphere is not a necessary step if one wishes to examine a protein in water surrounded by vacuum. However, it is a sensible one. If a water box is used, minimization and equilibration will simply lead the box to deform into the most stable shape possible, minimizing the surface tension. That shape is a sphere! Creating the sphere before beginning simulations reduces the amount of time needed to achieve equilibration and saves computational effort.

- 2 The output of the `wat_sphere.tcl` script will be the center and radius of the water sphere. Record these numbers. You will need them later. The script will have created the `ubq_ws.pdb` and `ubq_ws.psf`, respectively, of ubiquitin in a water sphere. They will be in your `1-1-build` directory. Check this by typing `ls`.
- 3 Type `exit` in the Terminal to exit the text version of VMD.
- 4 Launch the graphical version of VMD by typing `vmd` in the Terminal window.



Launch VMD. Open VMD graphically by double-clicking on the VMD icon under `Applications` in the Finder. Then, navigate to the `1-1-build` directory by using the `cd` command in the VMD command terminal.

We will check the appearance of the immersed molecule by loading the molecule with *both* structural and coordinate information.

- 5 Load the structural information first. Click `File` → `New Molecule...` in the VMD Main window. In the Molecule File Browser use the `Browse...` button to find the file `ubq_ws.psf`. Load it by pressing the `Load` button.
- 6 Load the coordinates into the PSF file. Make sure the `Load files for:` field in the Molecule File Browser says `ubq_ws.psf`. Then, click `Browse...`, find the file `ubq_ws.pdb`, and load it by pressing the `Load` button.

You should be able to see your ubiquitin molecule in the center of a beautiful sphere of water. Changing the representations in VMD will enable you to see it better.

- 7 Delete your ubiquitin molecule in a water sphere using the VMD Main window by clicking on `ubq_ws.psf` in the window, and selecting `Molecule` → `Delete Molecule`.

1.3.2 Ubiquitin in a Water Box

- 1 In the VMD Main window, click `Extensions` → `Tk Console`. In the VMD TkCon window of your VMD session type:

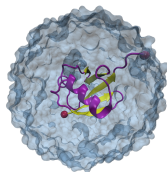
```
package require solvate
solvate ubq.psf ubq.pdb -t 5 -o ubq_wb
```

The `package require solvate` command loads the `solvate` package, so that VMD will be able to call it.

The `solvate` package will put your protein (described in `ubq.psf` and `ubq.pdb`) in a box of water. The `-t` option creates the water box dimensions such that there is a layer of water 5Å in each direction from the atom with the largest coordinate in that direction. The `-o` option creates the output files `ubq_wb.pdb` and `ubq_wb.psf` for ubiquitin with the water box. You will also obtain the files `combine.pdb` and `combine.psf` which may be eliminated. They are intermediate files used by the `solvate` program to transport information into VMD.



Size of Water Box. The water box created is somewhat small for this study, especially considering that you will pull and unravel the protein in Unit 3 of this tutorial. Ideally, one should work with a box which is large enough that the protein does not interact with its image in the next cell if periodic boundary conditions are used. Periodic boundary conditions will be explained in section 1.5. Furthermore, if the protein is being pulled, the box should be large enough that the water will still significantly immerse the protein when it is fully extended.



Ions. Ions should be placed in the water to represent a more typical biological environment. They are especially necessary if the protein being studied carries an excess charge. In that case, the number of ions should be chosen to make the system neutral. The ions present will shield the regions of the protein which carry the charge, and make the entire system more stable. They should be placed in regions of potential minima, since they will be forced to those regions during the simulation anyway. The `psf` file contains the charge of each atom and may be used to determine the charge of the total system or parts of it.

- 2 In the VMD Main window, click `File` → `New Molecule`. In the `Molecule File Browser` use the `Browse...` button to find the file `ubq_wb.psf`. Load

it by pressing the Load button. This will load the structural information into VMD.

- 3 In the same Molecule File Browser, browse for `ubq_wb.pdb` and load it. In the display, check if the water box surrounds ubiquitin, and demonstrate to yourself that the hydrogen atoms now exist.

- 4 In the VMD TkCon window type:

```
set everyone [atomselect top all]
measure minmax $everyone
```

This analyzes all atoms in the system and gives you the minimum and maximum values of x , y and z coordinates of the entire protein-water system.

- 5 These values are defined relative to the origin of the coordinate system, set by the initial pdb file, `1UBQ.pdb`. The center of the water box may be determined by calculating the midpoint of each of the three sides in the coordinate system. For example, if minimum and maximum values of x are returned as 10.44 and 51.12, respectively, x -coordinate of the center of the box would be $\frac{51.12+10.44}{2} = 30.78$. Alternatively, one can use tcl scripting in VMD to find the center of the box by typing

```
measure center $everyone
```

in the VMD TkCon window. Determine the coordinates of the center of your water box and record these numbers.

- 6 Close VMD by choosing File → Quit in the VMD Main window.

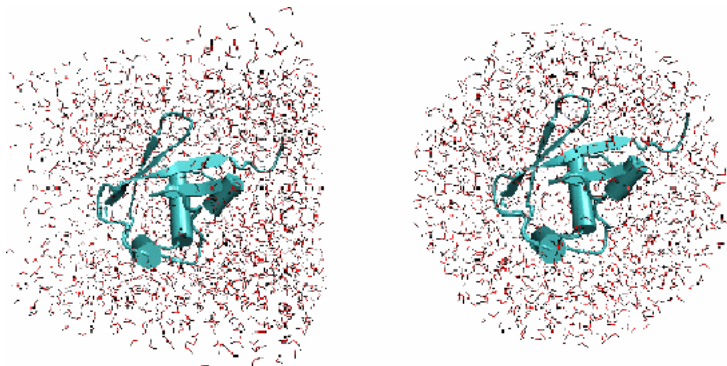
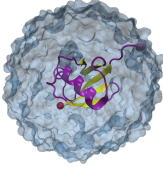


Figure 3: Ubiquitin in a water box and in a water sphere. Hydrogen atoms are colored black for contrast.

Now that you have the pdb and psf files for solvated ubiquitin, along with the parameter file for proteins in general, you only need a NAMD configuration file

to be able to minimize and equilibrate your ubiquitin-water system. In the next two sections, you will edit a NAMD configuration file provided to you in order to gain a beginner's understanding of its function.




Minimization and Equilibration. Minimization and equilibration differ from each other by the nature in which they implement the molecular dynamics force field. Energy minimization involves searching the energy landscape of the molecule for a local minimum, i.e., place in which the molecule is relaxed, by systematically varying the positions of atoms and calculating the energy. Equilibration involves molecular dynamics, whereby Newton Second Law is solved for each atom in the system to dictate its trajectory. Achievement of equilibrium is judged by how well velocities, pressure, etc. are distributed in the system over a given amount of time.

- 7 Before beginning the next section, you must copy the necessary pdb and psf files into your `common` folder. We will store the files there so we have a single directory from which to access them, and so that we do not need to keep multiple copies of them. In a Terminal window, type `cp ubq.pdb ubq.psf ubq_w* ../common/` and hit **Enter**. Then, type `ls ../common/` to see which files you have copied.


1.4 Ubiquitin in a Water Sphere: Simulation with Non-Periodic Boundary Conditions

In this section, you will examine the minimization and equilibration of ubiquitin in a water sphere placed in vacuum.

1.4.1 Configuration File



Configuration Warning. Be very careful when typing commands into your configuration files. Even the slightest typographical error will cause the simulation not to run. The point is not simply to run a simulation, but to run it correctly. Be sure your file is correct before you submit a simulation to be run!



Configuration File Explanation. This section will introduce a configuration file to you. The file is complete and ready for submission *as is*. Since you will be examining the file line by line in the section, you may skip to section 1.4.2 if you are very short on time, and examine the contents of this section later.

- 1 Go to your `1-2-sphere` directory by typing `cd ../1-2-sphere`. Here, you will find a configuration file for the minimization and equilibration of ubiquitin in a water sphere.

All output files for the minimization and equilibration of your ubiquitin in a water sphere system will be placed in this directory. The configuration file is the only input file placed here, since it is particular to this simulation. The `pdb`, `psf`, and parameter files, which may be used by many other simulations, are placed in your `common` directory and are *called* by each respective configuration file.

2 Open the configuration file, `ubq_ws_eq.conf` by typing `nedit ubq_ws_eq.conf`.

The configuration file may seem complex at first, but it will be examined line by line to determine its function in your simulation.

Note that when “#” appears at the beginning of a line, the entire line is treated as a comment and ignored by NAMD. In the middle of a line, “;#” is used to comment out the remainder of the line.

3 The “Job Description” section contains only comments, and its purpose is to inform those who view the configuration file about what it is meant for. Your comment should read

```
# Minimization and Equilibration of
# Ubiquitin in a Water Sphere
```

4 The “Adjustable Parameters” section contains five commands:

- **structure**: calls the `psf` file describing the system (`../common/ubq_ws.psf`).
- **coordinates**: calls the initial coordinate data from the file listed next to it (in this case `../common/ubq_ws.pdb`).
- **set temperature**: creates a variable called “temperature” in which to store a value for the initial temperature of the system. If you place the text “\$temperature” in the configuration file, NAMD simply reads it as a label for the number “310”. (Creating variables is useful since you can alter the value of that variable in a single place if it is listed many times in the configuration file.)
- **set outputname**: creates a variable called “outputname” in which to store a generic name for output files. If you place the text “\$outputname” in the configuration file, NAMD simply reads it as a label for “ubq_ws_eq”.
- **firsttimestep**: simply sets a number value for the first time step of the simulation. It is typically useful when restarting a simulation. For instance, if a previous simulation ended at time step 552, the command `firsttimestep 553` would be used.

5 The “Simulation Parameters” section contains many commands, commented into different categories:

- Input

- **paraTypeCharmm**: indicates whether or not the parameter file is in the format used by the CHARMM force field. **on** indicates that it is; **off** indicates that it is not. (If this command is not specified, NAMD assumes the file is in X-PLOR format by default.)
 - **parameters**: calls the force field parameters from the file listed next to it (in this case `../common/par_all27_prot_lipid.inp`).
 - **temperature**: sets the initial temperature of the system in Kelvin (K), with the value listed next to it (in this case `$temperature`, or 310). This is done by assigning random velocities to atoms picked from a Maxwell distribution such that their average kinetic energy accurately represents the given temperature.
- Force-Field Parameters
 - **exclude**: specifies which atomic interactions are to be excluded from consideration. See Figure 4 for general atom labels. The **scaled1-4** value indicates that interactions between any such atoms 1 and 2 and 1 and 3 are neglected and interactions between atoms 1 and 4 are weakened. The van der Waals interaction for "1-4" atoms are modified using special 1-4 parameters defined in the parameter files, and electrostatic interaction is modified as shown in the next command.

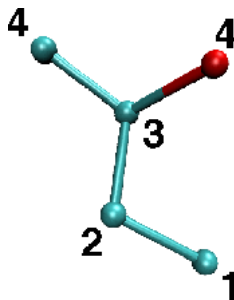


Figure 4: Number labels for atoms which are a given amount of bonds away from one another

- **1-4scaling**: specifies the degree to which the electrostatic interaction between 1-4 atoms is to be taken into account. It may be a decimal between 0 and 1 (here, it is 1) and indicates how much the interaction is "turned off" or "on", respectively.
- **cutoff**: indicates the distance in Å beyond which electrostatic and van der Waals interactions are cut-off. Otherwise, those interactions are considered over the entire volume of your system. This can be computationally too costly. When also employing a

fast solver for electrostatics such as Particle Mesh Ewald (Section 1.5.1) or Multilevel Summation Method (Section 1.4.1), the cutoff parameter instead defines the splitting distance for the $1/r$ interaction potential, in which a short-ranged part is evaluated exactly between atoms within the cutoff distance, and the remaining long-ranged part is approximated by the solver.

- **switching**: indicates whether or not switching functions are used to smoothly take electrostatic and van der Waals interactions to zero at the `cutoff` distance. You may list “on” or “off” next to it as a yes/no answer.
- **switchdist**: indicates the distance in Å at which the functional form of electrostatic and van der Waals interactions is modified to allow their values to approach zero at the `cutoff` distance. A visual explanation of this is useful and may be found in Figure 5.
- **pairlistdist**: is designed to make computation faster. It specifies a distance in Å. NAMD will only search within this distance for atoms which may interact by electrostatic or van der Waals interactions. This way, NAMD does not have to search the entire system. The distance must be greater than the `cutoff` distance, and the list must be updated during the simulation. See Figure 5.

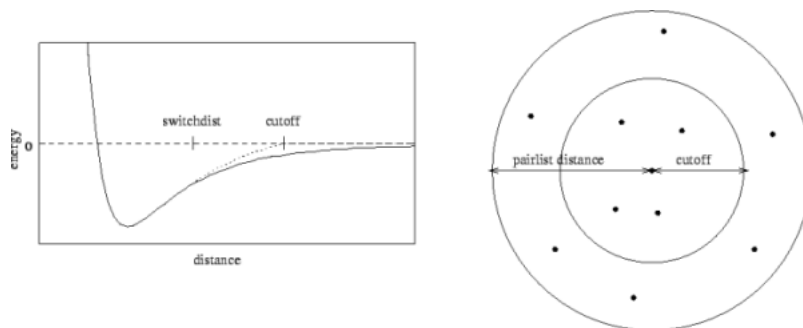


Figure 5: Cutoff and switching distances indicated on the left. Pair list distance indicated on the right.

- Integrator Parameters

- **timestep**: indicates the value of the time step size used in the simulation. MD simulations solve Newton’s laws in a discrete approximation to determine the trajectories of atoms. The time step tells NAMD how to discretize the particle dynamics. It is specified in femtoseconds (here, 2 fs).
- **rigidBonds**: specifies which bonds involving hydrogen are considered to be rigid (non-vibrating). The value `all` specifies all

linear bonds involving hydrogen and any other atoms.

- `nonbondedFreq`: specifies in number of time steps how often nonbonded interactions should be calculated. It is useful for saving computational time.
- `fullElectFrequency`: specifies in number of time steps how often full electrostatic interactions should be calculated.
- `stepspercycle`: Atoms are reassigned pair list identities (as explained above) once every cycle. This command specifies how long one cycle lasts, i.e. the number of time steps in one cycle.
- Constant Temperature Control
 - `langevin`: indicates whether or not the simulation uses Langevin dynamics; uses values `on` and `off`. See the science box below for more on Langevin dynamics.
 - `langevinDamping`: sets the value of the Langevin coupling coefficient, which quantifies the friction applied to the system, removing energy from the system, slowing atoms down, etc. It is specified in ps^{-1} .
 - `langevinTemp`: Langevin dynamics may be applied to all atoms or only non-hydrogen atoms in the system. This command specifies the temperature at which to keep those atoms, even though friction and random forces will be acting on them. (Remember `$temperature` is a variable for the value 310.)
 - `langevinHydrogen`: indicates whether or not Langevin dynamics will be applied to hydrogen atoms in the simulation; uses values `on` and `off`.

- Electrostatics with MSM

Multilevel Summation Method (MSM) is a useful method for dealing with electrostatic interactions in a system that does not have fully periodic boundary conditions along all three dimensions, in other words, when employing non-periodic or semi-periodic boundaries. Although MSM also supports fully periodic boundary conditions, the Particle Mesh Ewald (PME) method discussed in Section 1.5 is more efficient for smaller periodic systems, such as ubiquitin simulated in a water box. In the present simulation involving a water sphere, MSM is the best alternative for electrostatics.

MSM uses particle meshes, similar to PME, arranged as 3-D grids for evaluating long-range electrostatic interactions. Charges are assigned to nearby grid points, and the interaction of these gridded charges result in gridded potentials that are interpolated back to the atoms to determine the long-range atomic forces. Unlike PME which uses a single grid resolution, MSM uses a nesting of grids having coarser resolution at each successive “level” in real space for resolving the long-ranged tail of the $1/r$ Coulomb potential. Rather than evaluating the Ewald sum as PME does, MSM uses a continued splitting

of the interaction potential and performs interpolation from these nested grid levels.

- **MSM**: indicates whether or not the simulation uses the Multilevel Summation Method; uses values **yes** and **no**.
- **MSMGridSpacing**: The grid spacing between the finest level grid points determines, in part, the accuracy and efficiency of MSM. According to an error versus cost analysis, the optimal value is for the grid spacing to be a bit larger than the average interatomic spacing; since the performance is extremely sensitive to the grid spacing, it is best to leave this parameter set to its default value of 2.5Å.
- **MSMxmin, MSMxmax, MSMxmin, MSMxmax, MSMzmin, MSMzmax**: For non-periodic simulation, MSM needs to know the expected maximum and minimum coordinates so as to establish grids that will contain all atoms throughout the entire simulation. To keep the atoms from leaving the simulated space, it might be necessary to use a restraining potential, such as the spherical boundary restraints used for the water sphere simulation.

Additional MSM parameters that further control accuracy and performance are documented in the NAMD User's Guide.

- **Output**

- **outputName**: Several types of output data may be written by NAMD for any simulation. This command specifies the prefix for output filenames. NAMD always returns the following two output files for *every* simulation: a `pdb` file containing the final coordinates of all atoms in the system and a `vel` file containing the final velocities of all atoms in the system; the extensions for these files are `.coor` and `.vel`, respectively. Thus, this configuration file will write two files named `ubq_ws_eq.coor` and `ubq_ws_eq.vel`
- **restartfreq**: During the simulation, NAMD can also create restart files, one of which is a `pdb` file which stores atomic coordinates, and the other of which stores atomic velocities. This command specifies the amount of time steps between writing to the restart file (here, every 500 steps, or 1000fs, or 1 ps). If this command is not set, NAMD will not create a restart file. Furthermore, NAMD will store the file from the previous cycle each time it writes a new file. The filename is appended with a `.old` extension; it is created in case NAMD fails in writing the new restart file.
- **dcdfreq**: The `dcd` file contains only atomic coordinates, and they are written to the file several times over the course of a simulation. Thus, it provides a *trajectory* of the system over the runtime. This command specifies the number of time steps

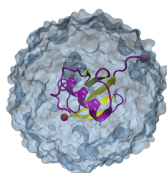
between writing new coordinates to the dcd output file. If this command is not set, NAMD will not create a dcd file.

In addition to the output files described, NAMD also prints a log of the simulation (which we will redirect into a .log file). This output is explained further below.

- **outputEnergies:** specifies the number of time steps between each output of system energies (for various force field interactions) into the .log file (here, every 100 steps, or 200 fs).

Langevin Dynamics. Langevin dynamics is a means of controlling the kinetic energy of the system, and thus, controlling the system temperature and/or pressure. The method uses the Langevin equation for a single particle:

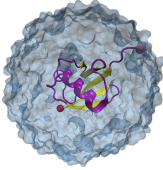
$$m_i \frac{d^2 x_i(t)}{dt^2} = \mathbf{F}_i\{x_i(t)\} - \gamma_i \frac{dx_i(t)}{dt} m_i + \mathbf{R}_i(t)$$



Here, two additional terms on the right hand side accompany the ordinary force the particle experiences. The second term represents a frictional damping that is applied to the particle with frictional coefficient $\gamma_i m_i$. The third term represents random forces which act on the particle (as a result of solvent interaction). These two terms are used to maintain particle kinetic energy to keep system temperature, for instance, at a constant value. Because an unnecessarily high damping constant can significantly slow the system's dynamics, one should always find the minimum `langevinDamping` coefficient sufficient to maintain the temperature. **A value of 1.0 is often a good starting point.**



Rigid Bonds. The time step used in any MD simulation should be dictated by the fastest process (i.e. movement of atoms) taking place in the system. Among the various interactions, bond stretching and angle bending are the fastest, with typical bond stretching vibrations occurring on the order of once every 10-100 femtoseconds. Using a time step of 2 fs, which is close to the vibrational period (10 fs) of linear bonds involving hydrogen (fastest vibrations, since hydrogen has small mass), requires that these bonds be fixed, and only slower vibrations may be free to move, such as dihedral angle bending. For large molecules, these slower vibrations typically govern the behavior of the molecule more than the quicker ones, so bond fixing is somewhat acceptable, but should be avoided for accurate simulations. One prefers to use an MD timestep which is $\sim 1/10$ of the fastest interactions in the simulation. For simulations with time step of 1 fs, one should use `rigidBonds` for water because water molecules have been parametrized as rigid molecules.



Electrostatics. Long-range electrostatic interactions play a crucial role in many biomolecular processes, making it important to accurately represent them in simulations. However, direct calculation of the full electrostatic interaction potential between all pairs of atoms is not feasible when simulating protein or larger systems. In order to efficiently calculate long-range electrostatics, NAMD provides the choice between two different fast electrostatic solvers: the Particle Mesh Ewald (PME) method requires using periodic boundary conditions and is preferable for constant pressure simulation; the Multilevel Summation Method (MSM) supports either periodic or non-periodic boundaries along any dimension and is preferable for simulations using non-periodic or semi-periodic boundaries.

6 The “Extra Parameters” section contains commands which are applicable to more specific simulations. Included here are commands which characterize the spherical boundary conditions on the water sphere. These conditions prevent the sphere from undergoing evaporation or diffusion.

- Spherical Boundary Conditions
 - **sphericalBC**: indicates whether or not the simulation uses spherical boundary conditions; uses values **on** and **off**.
 - **sphericalBCcenter**: sets the x, y, z coordinates of the center of the sphere to which spherical boundary conditions are applied. This is why you need to record the center of your water sphere after you solvate!

The next three commands are parameters which must be specified for spherical boundary conditions to work properly.

- **sphericalBCr1**: sets the distance in Å at which the first boundary potential begins to act.
- **sphericalBCk1**: The first potential applied by spherical boundary conditions to keep the sphere together (or pull it apart) is a harmonic one. This command sets the value of the force constant for that potential. Its value is specified in kcal/mol·Å².
- **sphericalBCexp1**: sets the value of the exponent used to formulate the potential; must be a positive, even integer.

7 The “Execution Script” section contains three commands, the first two of which apply to minimization and the last one of which applies to equilibration.

- Minimization
 - **minimize**: sets the number of iterations over which to vary atom positions to search for a local minimum in the potential (in this case 100).
 - **reinitvels**: Minimization is performed on the system after all atomic velocities have been set to zero. This command resets

atomic velocities such that the system starts at the temperature specified (in this case, `$temperature`, or 310K).

- `run`: sets the number of time steps over which to run the MD equilibration (in this case 2500, which corresponds to 5,000 fs or 5 ps, since a 2 fs time step has been used).

8 Now, close the configuration file by clicking File → Exit.

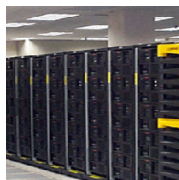


NAMD User's Guide. The explanations of configuration file commands in the previous sections is far from complete. For an explanation of a more general configuration file, see Appendix E. For a more in-depth explanation of configuration file commands and for acceptable values which may be supplied with those commands, see the NAMD User's Guide at <http://www.ks.uiuc.edu/Research/namd/current/ug/>.



Required Configuration File Parameters. The following parameters are required by NAMD to appear in every configuration file: `coordinates`, `structure`, `parameters`, `exclude`, `outputname`, `numsteps` and exactly one of the following: `temperature`, `velocities`, or `binvelocities`.

1.4.2 Run your Simulation



Running. Run your simulation by typing in a Terminal Window:

```
namd2 ubq_ws_eq.conf > ubq_ws_eq.log &
```

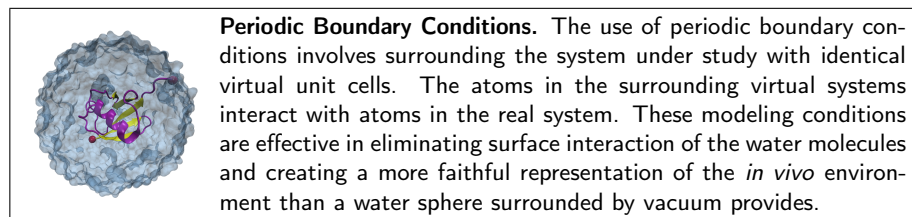


Setting the Path. In order to run `namd2`, you can provide the full path to the binary executable (e.g., `/home/me/installed/namd2`) or you can add the directory to your `PATH` environment variable (e.g., for bash you would `export PATH=/home/me/installed:$PATH`). An even better approach might be to create a `namd2` alias that specifies the number of cores you plan to use for your simulations. For example, setting up a `namd2` alias (again using bash) to run NAMD on four cores of your workstation, you would specify `alias namd2="/home/me/installed/namd2 +p4"`. The most common Linux distributions as well as Mac OS X default to using bash (Bourne again shell) for command line access.

Your simulation should take about 20 minutes to complete, and NAMD will produce the output files described in Section 1.7.

1.5 Ubiquitin in a Water Box: Simulation with Periodic Boundary Conditions

In this section, you will examine the minimization and equilibration of ubiquitin in a water box with periodic boundary conditions.



1.5.1 Configuration File

- 1 Go to your 1-3-box directory by typing `cd ../1-3-box`. Here, you will find a configuration file for the minimization and equilibration of ubiquitin in a water box. All output files for the minimization and equilibration of your ubiquitin in a water box system will be placed in this directory.
- 2 Open the configuration file, `ubq_wb_eq.conf` by typing `nedit ubq_wb_eq.conf`.

The configuration file contains some commands which are different than the water sphere configuration file. Here, these differences are pointed out and explained.

- 3 The only differences in this file lie in the "Simulation Parameters" section, where three new categories of parameters have been added. The "Output" section has also been modified. The new commands are listed:
 - Periodic Boundary Conditions
 - Three periodic cell basis vectors are to be specified to give the periodic cell its shape and size. They are `cellBasisVector1`, `cellBasisVector2`, and `cellBasisVector3`. In this file, each vector is perpendicular to the other two, as indicated by a single *x*, *y*, or *z* value being specified by each. For instance, `cellBasisVector1` is $x = 42\text{\AA}$, $y = 0\text{\AA}$, $z = 0\text{\AA}$. With each vector perpendicular, a rectangular 3-D box is formed.
 - `cellOrigin`: specifies the coordinates of the center of the periodic cell in Å. This is why you need to calculate the center of your water box after you solvate!
 - `wrapWater`: This command may be used with periodic boundary conditions. If a water molecule crosses the periodic boundary, leaving the cell, setting this command to `on` will translate its coordinates to the mirror point on the opposite side of the cell. Nothing can escape. The command may be set to `on` or `off`.

- `wrapAll`: same as `wrapWater`, except this applies to all molecules.
- Electrostatics with PME
 - Particle Mesh Ewald (PME) is a useful method for dealing with electrostatic interactions in a system when periodic boundary conditions are present. The Ewald sum is an efficient way of calculating long range forces in a periodic system. The particle mesh is a 3-D grid created in the system over which the system charge is distributed. From this charge, potentials and forces on atoms in the system are determined. As a result, your grid size should be chosen such that it is fine enough to accurately represent the configuration of your system.
 - `PME`: indicates whether or not the simulation uses the Particle Mesh Ewald Sum method; uses values `yes` and `no`.
 - `PMEGridSpacing`: sets the minimum ratio between the number of PME grid points along each `cellBasisVector` and the physical dimensions. Since the grid will replicate the charge distribution in your system, `PMEGridSpacing` should be chosen to be large enough so that the grid spacing accurately reproduces your charge distribution. However, it should not be so large that it will slow down your simulation to provide unnecessary precision. Typically, a grid density of slightly more than $1/\text{\AA}$ is a good choice to reproduce charge distribution in biological systems, where the closest atoms have a bond separation on the order of 1 \AA . This corresponds to a `PMEGridSpacing` of 1.0. NAMD will then automatically set the PME grid sizes (see below) such that there is always less than 1.0 \AA between grid points and the sizes contain only small prime factors (e.g. 2, 3, and 5).

Alternatively, one can define the PME grid sizes manually, using `PMEGridSizeX`, `PMEGridSizeY`, and `PMEGridSizeZ`. These set the size of the PME grid *along* `cellBasisVector1`, 2 *and* 3, respectively (not the x , y , and z directions as implied). For speed in computing Fast Fourier Transforms, `PMEGridSizeX` should be chosen so that it can be factorized by 2, 3, or 5. If your `cellBasisVector1` = (60, 0, 0), a good choice for `PMEGridSizeX` might be 64, since $60 \text{ \AA} / 64 = 0.9375 \text{ \AA}$ and $64 = 2^6$. Note that since `cellBasisVector` is defined with slightly different values in each direction, the size of the mesh spacing (in length) will be different in each direction.

Note also that when using the PME method, the command `cutoff` dictates the separation between long and short range forces for the method; it does not simply turn off interactions.

- Constant Pressure Control (variable volume)
 - `useGroupPressure`: NAMD calculates system pressure based on the forces between atoms and their kinetic energies. This command specifies whether interactions involving hydrogen should

be counted for all hydrogen atoms or simply between groups of hydrogen atoms; uses values **yes** and **no** and must be set to **yes** if **rigidBonds** are set.

- **useFlexibleCell**: specifies whether or not you want to allow the three dimensions of the periodic cell to vary *independently*; uses values **yes** or **no**.
- **useConstantArea**: NAMD allows you to keep the $x - y$ cross sectional area constant while varying the z dimension; uses values **yes** and **no**.
- **langevinPiston**: indicates whether or not the simulation uses a Langevin piston to control the system pressure; uses values **on** and **off**.
- **langevinPistonTarget**: specifies, in units of bar, the pressure which the Langevin piston tries to maintain. (1 atm = 1.013 bar)
The following are specifications for the Langevin piston which NAMD allows you to specify.
- **langevinPistonPeriod**: sets the oscillation time constant in fs for the Langevin piston.
- **langevinPistonDecay**: sets the damping time constant in fs for the Langevin piston.
- **langevinPistonTemp**: sets the “noise” temperature in K for the Langevin piston; should be set equal to the target temperature for the temperature control method (here, set by **langevinTemp**).

- Output

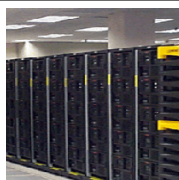
- **xstFreq**: The *extended system trajectory* file contains a record of the periodic cell parameters, essentially recording the trajectory of the cell boundaries over the run time. This command specifies how often, in time steps, the configuration will be recorded. If this command is set, three xst files will be output: 1 final and 2 restarts.
- **outputPressure**: specifies the number of time steps between each output of system pressure into the **.log** file.

Note that the commands which specify spherical boundary conditions have been completely removed, since this simulation is using periodic boundary conditions.



Minimization and Equilibration. Typically, MD minimization and equilibration simulations involve more than one minimization-equilibration cycle, often fixing and releasing molecules in the system. For instance, one typically minimizes the system and then equilibrates with the atoms in the protein fixed in space, and then minimizes the system again and equilibrates again, this time with the protein free to move. Fixing the protein allows the water, which typically responds much faster to forces than the protein, to do the relaxing in the first step. This saves computational effort and prevents the introduction of artifacts from an unstable starting structure.

1.5.2 Run your Simulation



Running. Run your simulation by typing in a Terminal window:

```
namd2 ubq_wb_eq.conf > ubq_wb_eq.log &
```

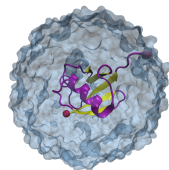


A Note on Restarting Simulations. Often, it is necessary or useful to run your simulation in steps. For instance, you may fully equilibrate a protein system and then desire to perform several different types of simulations using this equilibrated structure as a starting point. In that case, you wish to restart simulating from the equilibrated structure. You can use the configuration file `namd-tutorial-files/common/sample.conf` as a template for restarting simulations if you note the following points:

- Change the first instance of “if {0} {” to “if {1} {” so that NAMD recognizes that it should take coordinates, velocities, and system dimensions from restart files. By bracketing a set of commands inside an `if {n}` statement, NAMD will ignore the commands if `n=0` and read them if `n≠0`.
- Make sure you do not specify a temperature if you are using a velocity restart file. You should comment out the temperature command by placing a # in front of it.
- For periodic boundary conditions, make sure you do not re-specify the periodic cell if you are using restart files, since NAMD will read the dimensions from the restart file.
- Be certain all other simulation conditions accurately match what you would like to accomplish. For example, you may no longer need minimization if your system is already equilibrated.

1.6 Ubiquitin in Generalized Born Implicit Solvent

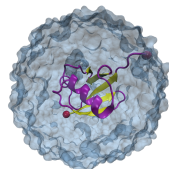
In this section, you will examine the minimization and equilibration of ubiquitin in generalized Born implicit solvent (GBIS).



Implicit Solvent. An implicit solvent model is a simulation technique which eliminates the need for explicit water atoms by including many of the effects of solvent in the inter-atomic force calculation. For example, polar solvent acts as a dielectric and screens (lessens) electrostatic interactions. The elimination of explicit water accelerates conformational explorations and sometimes increases simulation speed at the cost of not modeling the solvent as accurately as explicit models.



Accuracy of Implicit Solvent. Because implicit solvent models eliminate explicit water molecules and represent water in an averaged manner, implicit solvent models are considered less accurate than explicit solvent models. Always use caution when employing implicit solvent for molecular dynamics research.



Generalized Born Implicit Solvent. Generalized Born implicit solvent models are one particular class of implicit solvent models. There are two parts to a GBIS calculation. First, the Born radius of each atom is calculated. An atom's Born radius represents the degree of exposure of an atom to solvent. Atoms on the surface of a protein are highly exposed to solvent, their electrostatic interactions will be highly screened and their Born radii will be small. Atoms buried in the center of a protein will not be very exposed to solvent, their electrostatics won't be screened much and their Born radii will be large. Second, inter-atomic electrostatic forces are calculated based on atom separation as well as the geometric mean of the two atoms' Born radii.

1.6.1 Configuration File

- 1 Go to your 1-4-gbis directory by typing `cd ../1-4-gbis`. Here, you will find a configuration file for the minimization and equilibration of ubiquitin in implicit solvent. All output files for simulation of your ubiquitin in implicit solvent will be placed in this directory.
- 2 Open the configuration file, `ubq_gbis_eq.conf` by typing `nedit ubq_gbis_eq.conf`.

The configuration file contains some commands which are different than the water sphere and periodic boundary conditions configuration files. Here, the differences are pointed out and explained.

- 3 Because there is currently no way of calculating long-range interactions in implicit solvent, such as through PME, features based on periodic boundary conditions are not used with GBIS as listed below.

- Periodic Boundary Conditions are not used.
- PME is not used.
- Constant Pressure Control (variable volume) is not used.

4 A few additional commands are required for implicit solvent use. The new commands are listed:

- **structure & coordinates:** implicit solvent simulations use structures which do not include any explicit water or ions as these are represented implicitly.
- **gbis:** indicates whether or not the simulation uses the generalized Born implicit solvent model. Default value is **no**; set to **yes** to utilize.
- **cutoff:** because there is no long-range electrostatic calculation, **cutoff** should be set higher for GBIS than for PME simulations; a value of 14 Å is sufficient here.
- **alphaCutoff:** sets the cutoff used to determine the Born radius of each atom. It is reasonable to set it a few Ås less than **cutoff**; **alphaCutoff** = 12 Å should be sufficient here.
- **ionConcentration:** sets the concentration of implicit ions. Increasing the ion concentration increases the electrostatic screening; the default value is 0.2 M.



Explicit Water or Ions. Because solvent and ions are implicitly modeled with generalized Born, neither water molecules nor ions should be included in the simulated structure.

1.6.2 Run your Simulation



Running. Run your simulation by typing in a Terminal window:

```
namd2 ubq_gbis_eq.conf > ubq_gbis_eq.log &
```

Your implicit solvent simulations should take roughly the same time as the water sphere simulation. The simulation will produce output files similar to the ubiquitin in water sphere simulation, which are discussed in Section 1.7.

1.7 Output: Water Sphere Log File

- 1 Output of your water sphere minimization-equilibration simulation will be returned to the `1-2-sphere` directory. Go there by typing `cd ../1-2-sphere`. List the files in the directory by typing `ls`.

Based on the descriptions in the Output part of the "Simulation Parameters" section, your present simulation should yield these eleven output files:

- `ubq_ws_eq.log`
- `ubq_ws_eq.coor`
- `ubq_ws_eq.vel`
- `ubq_ws_eq.xsc`
- `ubq_ws_eq.dcd`
- `ubq_ws_eq.restart.coor`
- `ubq_ws_eq.restart.vel`
- `ubq_ws_eq.restart.xsc`
- `ubq_ws_eq.restart.coor.old`
- `ubq_ws_eq.restart.vel.old`
- `ubq_ws_eq.restart.xsc.old`

(Your original configuration file should also still be in the directory.)

Seven of the output files contain binary data so that coordinate and velocity information may be kept to high precision. The files which are not in binary code are:

- * `ubq_ws_eq.xsc`, `ubq_ws_eq.restart.xsc`, `ubq_ws_eq.restart.xsc.old`, which are *extended system configuration* files. They store the periodic cell dimensions of the system and the time step at which this information was taken. They are not useful when periodic boundary conditions are not used. (The restart files function in the same way as described before.)
 - * `ubq_ws_eq.log`, the log file. It is here that the energy of the various force field interactions is stored. The log file stores a lot of information and it will be examined.
- 2 The first section of the log file, indicated by the `Info` tag, contains the parameters used to run the simulation, and other useful information about the system, such as the number of atoms, the type and number of bonds, the total mass, and the total charge.

- 3 After the first section, information about the minimization of the system is displayed beginning with the line labeled `TCL`. This line states how long the minimization lasts.
- 4 After that, the pressure of the system is given. For the present simulation, no pressure output is given because NAMD does not define the pressure for a non-periodic system. For your simulation using periodic boundary conditions, you will see values for the pressure.
- 5 The next part gives a listing of energies of interaction, first defining which are listed with `ETITLE`, then listing the actual values in kcal/mol every time step next to `ENERGY`. (The time step (TS) value is a count of the number of timesteps NAMD has performed and is *not* in units of time, and the temperature (TEMP) value is in K.)
- 6 The values listed for `INITIAL STEP` and `GRADIENT TOLERANCE` are mathematical parameters corresponding to the numerical search for a minimum in the potential. `GRADIENT TOLERANCE` will decrease over the course of the minimization and may be used to roughly judge the extent of minimization. See Figure 6.

```

INFO: RELATIVE PRECISION 1.7851E-06 AT 11.9974
Info: Entering startup phase 8 with 8116 kB of memory in use.
Info: Finished startup with 11708 kB of memory in use.
TCL: Minimizing for 100 steps
PRESSURE: 0 0 0 0 0 0 0 0 0 0
GPRESSURE: 0 0 0 0 0 0 0 0 0 0
ETITLE:      TS      BOND      ANGLE      DIHED      IMPRP
            ELECT      VDW      BOUNDARY      MISC      KINETIC
            TOTAL      TEMP      TOTAL2      TOTAL3      TEMPAVG
ENERGY:      0      1947.9207      1238.5705      263.8635      10.7301
            -18781.7697      1984.0070      71.1903      0.0000      0.0000
            -13265.4876      0.0000      -13265.4876      -13265.4876      0.0000
INITIAL STEP: 1e-06
GRADIENT TOLERANCE: 2404.68
PRESSURE: 1 0 0 0 0 0 0 0 0 0
GPRESSURE: 1 0 0 0 0 0 0 0 0 0

```

Figure 6: Typical minimization output in the log file

- 7 After minimization, equilibration data are presented in the log file. See Figure 7. The first lines shown in the figure confirm that NAMD is writing the proper information at the proper time step, which you have specified in the configuration file. The following space is where pressures would normally be written. Note that since they are not pressures here, this

space is used to store the total time step of the simulation. Energies at that time step are then fully reported. In this case, they are output every 100 time steps, as specified in the configuration file.

```

-14963.7379      305.9578      -15062.8374      -14958.0471      311.8630
WRITING EXTENDED SYSTEM TO RESTART FILE AT STEP 500
WRITING COORDINATES TO DCD FILE AT STEP 500
WRITING COORDINATES TO RESTART FILE AT STEP 500
FINISHED WRITING RESTART COORDINATES
WRITING VELOCITIES TO RESTART FILE AT STEP 500
FINISHED WRITING RESTART VELOCITIES
PRESSURE: 600 0 0 0 0 0 0 0 0 0
GPRESSURE: 600 0 0 0 0 0 0 0 0 0
PRESSAVG: 600 0 0 0 0 0 0 0 0 0
GPRESSAVG: 600 0 0 0 0 0 0 0 0 0
ENERGY:      600      229.5774      711.0708      327.1866      39.1790
             -22337.1977      1649.9026      6.0100      0.0000      4292.5145
             -15081.7569      309.3357      -15065.4222      -15062.3851      311.2736

```

Figure 7: Typical equilibration output of the log file

- 8 The end of the file confirms that the final frame of the simulation is being recorded, and provides computational data which may be used to benchmark your run should you wish to change parameters, run on another computer, etc.

The log file for your simulation of ubiquitin in a water box is quite similar to the one described above with the exception of pressure output, as described. See Appendix F for more information on log files.

1.8 Analysis of Water Sphere Equilibration

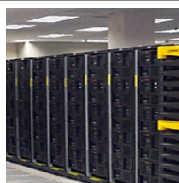
In this section, you will analyze the extent to which your system has equilibrated using what is known as the *Root Mean Square Deviation*, or RMSD. The RMSD characterizes the amount by which a given selection of your molecule deviates from a defined position in space. You will use the output files from your minimization and equilibration of ubiquitin in a water sphere to calculate RMSD values and analyze the extent of equilibration of the simulation. RMSD values will be calculated for all atoms of the protein backbone (without hydrogens) for the entire protein and for the protein excluding the last five residues.

1.8.1 RMSD for Entire Protein

Your minimization-equilibration simulation generated a trajectory for the system called `ubq_ws_eq.dcd`. That trajectory is key to calculating the RMSD of

the protein over the course of the equilibration. The simulation was performed in a so-called *NVT ensemble* in which the number of particles, N , the volume, V , and the temperature, T , are kept constant.

VMD includes many analysis tools. One of these, the NAMD Plot plugin, may be used to plot output from NAMD log files. This VMD plugin uses the program `namdplot`, which gets the relevant data from the log files for values of energies, temperature, etc. over time. VMD then uses an internal plotting program to plot the data for you.



namdplot. The program `namdplot` is also available separately at www.ks.uiuc.edu/Research/namd/utilities/. This stand-alone version will retrieve the relevant data and then use the package `xmgrace` for plotting.

- 1 Open VMD by typing `vmd` in the Terminal window.



Launch VMD. Open VMD graphically by double-clicking on the VMD icon under Applications in the Finder. Then, navigate to the 1-2-sphere directory by using the `cd` command in the VMD command terminal.

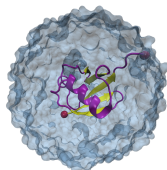
- 2 Launch the NAMD Plot plugin by clicking Extensions → Analysis → NAMD Plot in the VMD Main window.
- 3 In the NAMD Plot window, select File → Select NAMD Log File, select the file `ubq_ws_eq.log` and click Open.
- 4 All the thermodynamic variables from the NAMD log file are available for plotting as shown in the VMD NAMD Plot window. TS stands for time step, BOND for bond energy, and so forth. Click the box marked TEMP and then select File → Plot Selected Data. This will get all the temperature data from the log file and plot it over time.
- 5 Try using NAMD Plot for TOTAL (total energy). You should see the variable converging to an average value for an equilibrated system.

The thermodynamic variables that you checked above tell you about the thermodynamic state of the whole system. But you would also like to know if your protein is conformationally stable. For this, you will calculate the RMSD of the protein backbone. This will give you an idea of the stability of the protein. If the RMSD is still increasing at the end of the run, it means your protein is still searching for a lower energy state, and thus is not yet equilibrated!

- 6 When you are finished examining the plots, close the Multiplot window.

Root Mean Square Deviation. The Root Mean Squared Deviation (RMSD) is a numerical measure of the difference between two structures. It is defined as:

$$RMSD_{\alpha}(t_j) = \sqrt{\frac{\sum_{\alpha=1}^{N_{\alpha}} (\vec{r}_{\alpha}(t_j) - \langle \vec{r}_{\alpha} \rangle)^2}{N_{\alpha}}}$$



where N_{α} is the number of atoms whose positions are being compared, N_t is the number of time steps over which atomic positions are being compared, $\vec{r}_{\alpha}(t_j)$ is the position of atom α at time t_j , and $\langle \vec{r}_{\alpha} \rangle$ is the average value of the position of atom α to which the positions $\vec{r}_{\alpha}(t_j)$ are being compared. It is defined as:

$$\langle \vec{r}_{\alpha} \rangle = \frac{1}{N_t} \sum_{j=1}^{N_t} \vec{r}_{\alpha}(t_j)$$

Note that the RMSD for your protein will change over time. Also, note the script you are using takes the first time step of the simulation as a reference, rather than using an average value.

You will use VMD to calculate RMSD values:

- 7 Load your psf file for the water sphere, `ubq_ws.psf`, which is in your common directory, by clicking File → New Molecule... in the VMD Main window. Click the Browse button in the Molecule File Browser window. Find `ubq_ws.psf` in the common directory, and double click on it. Then click Load.
- 8 Click the Browse button in the Molecule File Browser window. Click on the directory `1-2-sphere`, and choose `ubq_ws_eq.dcd` by double clicking on it. Then click Load. You have loaded the trajectory of your equilibration.
- 9 The script we are going to use is called `rmsd.tcl`. This is the script content:

```
set outfile [open rmsd.dat w]
set nf [molinfo top get numframes]
set frame0 [atomselect top "protein and backbone and noh" frame 0]
set sel [atomselect top "protein and backbone and noh"]
# rmsd calculation loop
for { set i 1 } { $i <= $nf } { incr i } {
  $sel frame $i
  $sel move [measure fit $sel $frame0]
  puts $outfile "[measure rmsd $sel $frame0]"
}
close $outfile
```

- 10 The script does the following:

- Open file `rmsd.dat` for writing.
`set outfile [open rmsd.dat w]`

- Get the number of frames in the trajectory and assign this value to the variable `nf`

```
set nf [molinfo top get numframes]
```
- Select the first frame of the molecule to be the one other frames will compare to. The selection contains the atoms in the backbone of the protein, excluding hydrogens:

```
set frame0 [atomselect top "protein and backbone and noh" frame 0]
```
- Make the same selection as before for an undetermined frame.

```
set sel [atomselect top "protein and backbone and noh"]
```
- Text after `#` denotes comment.

```
# rmsd calculation loop
```
- Loop over all frames in the trajectory:

```
for { set i 1 } { $i <= $nf } { incr i } {
```
- Change the selection `$sel` to the frame to be compared.

```
$sel frame $i
```
- Calculate the matrix that will fit both selections. Apply this matrix to the second selection to align the molecules:

```
$sel move [measure fit $sel $frame0]
```
- Calculate the RMSD value between these two selections, and write it to file:

```
puts $outfile "[measure rmsd $sel $frame0]"
```

You can use the script for the system to test for equilibration.

- 11 Open the TkCon window of VMD by clicking Extensions → Tk Console in the VMD Main window. In the TkCon window, type `source rmsd.tcl`. This will perform all the commands in the script. The script will write a file `rmsd.dat` that will contain the value of the RMSD of the protein backbone against time.

Outside of VMD, you can use a plotting program to see this data. Examples of these are gnuplot, xmgrace, Microsoft Excel, Mathematica, and scilab.

- 12 Use xmgrace to plot the file `rmsd.dat`. In the Terminal window, type `xmgrace rmsd.dat`.

The curve does not reveal very much information because of short runtime and infrequent writing of the `dcd` file. Figure 8 shows a more typical RMSD plot for an equilibrated system along with the plot you have generated. Can you see the first RMSD curve flattening? This means the system is equilibrated.

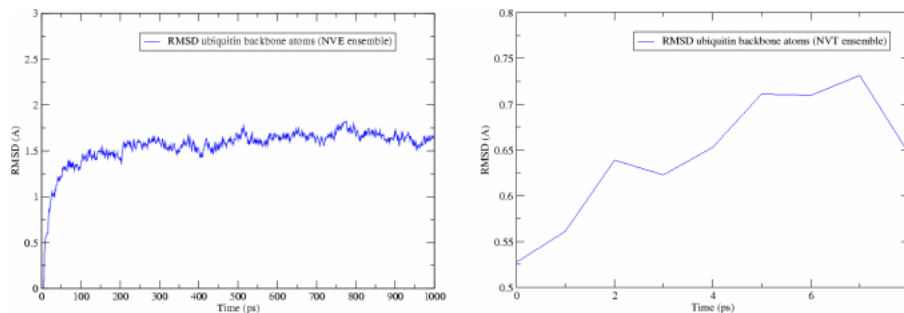


Figure 8: RMSD versus simulation time for a system equilibrating with a longer run time (left) and your system (right)

1.8.2 RMSD for Protein without Last 5 Residues

The last five residues are relatively unstable compared to the rest of the protein. How do you think the RMSD should differ in this case than with the entire protein?

- 1 You can easily modify the `rmsd.tcl` to plot the RMSD for the protein without the last five residues. Exit `xmgrace` by clicking File → Exit in the program window. Create an identical file to `rmsd.tcl` with a new name by typing `cp rmsd.tcl rmsd_5.tcl` in the Terminal window.
- 2 Open the new file `rmsd_5.tcl` using `nedit` by typing `nedit rmsd_5.tcl` in the Terminal window.
- 3 Edit the file in the following way:

Line 1: <code>open rmsd.dat w</code>	<code>→</code>	<code>open rmsd_5.dat w</code>
Line 3: <code>...and noh"</code>	<code>→</code>	<code>...and noh and not (resid 72 to 76)"</code>
Line 4: <code>...and noh"</code>	<code>→</code>	<code>...and noh and not (resid 72 to 76)"</code>
- 4 Save the file and exit `nedit` by clicking File → Save and then clicking File → Exit.
- 5 Type `source rmsd_5.tcl` in the TkCon window of VMD. This will perform all the commands in the script. The script will write a file `rmsd_5.dat` that will contain the value of the RMSD of the protein backbone against time without the last five residues.
- 6 Use `xmgrace` to plot the file `rmsd_5.dat` in the same manner as before with file `rmsd.dat`.


```
xmgrace rmsd_5.dat
```
- 7 When you are done analyzing the plot, close `xmgrace`.

- 8 Delete the current displayed molecule in VMD using the VMD Main window by clicking on `ubq_ws.psf` in the window, and selecting `Molecule` → `Delete Molecule`.

2 Analysis

This unit presents a series of examples of how to analyze data produced from NAMD simulations. For these examples you will not run the simulations themselves; instead you will analyze already produced data. Nevertheless, the instructions to set up and run the simulations are included, so you can actually produce the data yourself if time permits.

The steps that must be followed for the analysis are marked with an asterisk (*). Make sure to go through these steps. We encourage you to at least read the other steps, so you can refer to them later when setting up future simulations. The exercises will have detailed explanations of methods used. We encourage, however, that you be bold and try your own way to do the analysis.

2.1 Equilibrium

This section contains exercises that will let you analyze properties of a system in equilibrium. The exercises mostly use pre-equilibrated trajectories from different ensembles to calculate properties of the ubiquitin system.

2.1.1 RMSD for individual residues

Objective: Find the average RMSD over time of each residue in the protein using VMD. Display the protein with each residue colored according to its average RMSD value.

* 1 Go to the directory 2-1-rmsd/

You will use a script within VMD that will allow you to compute the average RMSD of each residue in your protein, and assign this value to the User field for each residue.



The VMD User Field. VMD stores a set of data under the field "User" for each atom in a molecule for each timestep. One can use this field to store any numerical values one wishes. VMD's "User" coloring mode, which you will soon use, will color atoms according to their User values, making the desired property stand out from atom to atom and over the course of a simulation. This is very useful when you want to show a property of the system that you have computed yourself.

Properties may be stored in any field that VMD associates with atoms, such as the Beta and Occupancy fields, which correspond to the B and O fields of a PDB file, but these two fields do not have the flexibility to change their values over time (and may actually contain pertinent PDB information!) like the User field can.

In the previous unit, you had VMD open with the equilibration trajectory of the ubiquitin periodic system loaded. You will repeat this process:

- * **2** Load the structure file. First, open the Molecule File Browser from the File → New Molecule... menu item. Browse for and Load the file `ubq_wb.psf` in the directory `common`. (Click `../` to go up one directory.)
- * **3** The menu at the top of the Molecule File Browser window should now show 2: `ubq_wb.psf`. This ensures that the next file that you load will be added to that molecule (molecule ID 2). Now, browse for the file `ubq_wb_eq.dcd` located in the directory `1-3-box/` and click on Load again. You can close the Molecule File Browser window.
- * **4** Go to the TkCon window in VMD, and navigate to the `2-1-rmsd/` directory by typing `cd ../2-1-rmsd/`
- * **5** The script you will use is called `residue_rmsd.tcl`. In the TkCon window, type:

```
source residue_rmsd.tcl
```

This command itself does not actually perform any calculations. It reads the script `residue_rmsd.tcl` which contains a procedure called `rmsd_residue_over_time`. Calling this procedure will calculate the average RMSD for each residue you select over all the frames in a trajectory. The procedure is called as:

```
rmsd_residue_over_time <mol> <sel_resid>
```

where `<mol>` is the molecule in VMD that you select (if not specified, defaults to the top molecule), and `<sel_resid>` is a list of the residue numbers in that selection. The procedure employs the equations for RMSD shown in Unit 1.

- * **6** For this example, you will select all the residues in the protein. The list of residue numbers can be obtained by typing in the TkCon window:


```
set sel_resid [[atomselect top "protein and alpha"] get resid]
```

 The above command will get the residue numbers of all the α -carbons in the protein. Since there is just one and only one α -carbon per residue, it is a good option. The command will create a list of residue numbers in the variable `$sel_resid`.
- * **7** Call the procedure to calculate the RMSD values of all atoms in the newly created selection:


```
rmsd_residue_over_time top $sel_resid
```

 You should see the molecule wiggle as each frame gets aligned to the initial structure (This may happen very fast in some machines). At the end of the calculation, you will get a list of the average RMSD per residue. This data is also printed to the file `residue_rmsd.dat`.

The procedure also sets the value of the User field of all the atoms of the residues in the selection to the computed RMSD value. You will now color the

protein according to this value. You will be able to recognize which residues are free to move more and which ones move less during the equilibration. In order to use these new values to learn about the mobility of the residues, you will create a representation of the protein colored by User value.

- * **8** Open the Representations window using the Graphics → Representations... menu item.
- * **9** In the Atom Selection window, type `protein`. Choose Tube as Drawing Method, and in the Coloring Method drop-down menu, choose submenu Trajectory, then User, and again User. Now, click on the Trajectory tab, and in the Color Scale Data Range, type 0.40 and 1.00. Click the Set button.

You should now see the protein colored according to average RMSD values. The residues displayed in blue are more mobile while the ones in red move less. This is somewhat counterintuitive, so you will change the color scale.

- * **10** Choose the Graphics → Colors... menu item. Choose the Color Scale tab. In the Method pull-down menu, choose BGR. Your figure should now look similar to Fig. 9.

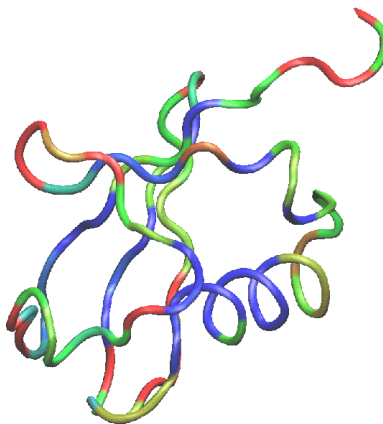


Figure 9: Ubiquitin colored by the average RMSD per residue. Red denotes more mobile residues, and blue denotes residues which moved less during equilibration.

- * **11** Plot the RMSD value per residue by typing in a Terminal window (make sure you are in the directory `2-1-rmsd/`):

```
xmgrace residue_rmsd.dat
```

Take a look at the RMSD distribution. You can see regions where a set of residues shows less mobility. Compare with the structural feature of your protein. You will find a correlation between the location of these regions and secondary structure features like α helices or β sheets.

- * **12** When you are finished investigating the plot, close `xmgrace`, saving your plot if you wish.
- * **13** Delete the current displayed molecule in VMD using the VMD Main window by clicking on `ubq_wb.psf` in the window, and selecting `Molecule` \rightarrow `Delete Molecule`.

2.1.2 Maxwell-Boltzmann Energy Distribution

Objective: Confirm that the kinetic energy distribution of the atoms in a system corresponds to the Maxwell distribution for a given temperature.

- * **1** In a Terminal window, type `cd ../2-2-maxwell` to change to the directory `2-2-maxwell/`

For this exercise, you need a file that contains the velocities of every atom for one instant of the simulation. You will use a file corresponding to the last frame of an equilibration of ubiquitin. The simulation that generated this file was run exactly as the one you performed in directory `1-3-box/`, except that the time step used here was 1 fs. You can compare the configuration file used for that simulation to the one in the `example-output/` of this directory. As discussed in the first unit, one should use `rigidBonds` for water in any production simulation since water molecules have been parametrized as rigid molecules. But for the illustration of Maxwell-Boltzmann energy distribution, the effect of force field can be negligible. To be simple, we are not using the option `rigidBonds`. Here, we provide you with the file `ubq_wb_eq_1fs.restart.vel`. Alternatively, you can use any velocity file, as long as constraints were not used in the simulation.

- 2** You will now load the structure file. First, open the Molecule File Browser from the `File` \rightarrow `New Molecule...` menu item. Browse for and Load the file `ubq_wb.psf` in the directory `common`.
- 3** The menu at the top of the window should now show `3: ubq_wb.psf`. This ensures that the next file that you load will be added to that molecule (molecule ID 3). Now, browse for the file `ubq_wb_eq_1fs.restart.vel` in the directory `2-2-maxwell/`. This time you need to select the type of file. In the `Determine file type:` pull-down menu, choose `NAMD Binary Coordinates`, and click on `Load` again. Close the Molecule File Browser.

The molecule you loaded looks terrible! That is because VMD is reading the velocities as if they were coordinates. It does not matter how it looks, because what we want is to make VMD write a useful file: one that contains the masses and velocities for every atom.

4 In the VMD TkCon window, navigate to the `2-2-maxwell/` directory by typing `cd ../2-2-maxwell/`

5 First, you will create a selection with all the atoms in the system. Do this by typing in the TkCon window:

```
set all [atomselect top all]
```

6 Now, you will open a file `energy.dat` for writing:

```
set fil [open energy.dat w]
```

7 For each atom in the system, calculate the kinetic energy $\epsilon_k = \frac{1}{2}mv^2$, and write it to a file

```
foreach m [$all get mass] v [$all get {x y z}] {
  puts $fil [expr 0.5 * $m * [vecdot $v $v] ]
}
```

8 Close the file:

```
close $fil
```

9 Outside VMD, take a look at your new `energy.dat` file. In a Terminal window, make sure you are in the `2-2-maxwell/` directory and type:

```
nedit energy.dat
```

It should look something like the list below (although the values will not necessarily be the same):

```
1.26764386127
0.189726622306
0.268275447408
...
```

10 Quit `nedit` and VMD.

* 11 If you chose not to go through the steps above, there is a VMD script that reproduces them and will create the file `energy.dat`. In a Terminal Window, type:

```
vmd -dispdev text -e get_energy.tcl
```

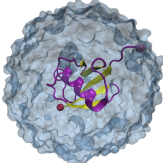
This will run VMD in text mode, source the script `get_energy.tcl`, and produce the `energy.dat` file. When it is finished, type `exit` to exit VMD.

You now have a file of raw data that you can use to fit the obtained energy distribution to the Maxwell-Boltzmann distribution. You can obtain the temperature of the distribution from that fit. In the rest of this section, we will show how to do this with the 2-D graphics package `xmgrace`. If you are more familiar with another tool, you may use it instead.

* 12 Quit VMD.

- * **13** In a Terminal window, type `xmgrace`.
- * **14** Once you see the `xmgrace` window, choose the `Data` → `Import` → `ASCII` menu item. In the Files box, select the file `energy.dat`. Click on the OK button. You should see a black trace. This is the raw data. You can now close the Read sets window.
- * **15** To look at the distribution of points, you will make a histogram of this data. Choose the `Data` → `Transformations` → `Histograms...` menu item. In the `Source` → `Set` window, click on the first line, in order to make a histogram of the data you just loaded.
- * **16** Click on the Normalize option.
- * **17** Fill in `Start: 0`, `Stop at: 10`, and `# of bins: 100`. Click `Apply`.
- * **18** You have created a plot, but you cannot see it yet. Use the right button of your mouse to click on the first set (in the `Source` → `Set` window). Click on `Hide`. Now, go to the main `Grace` window and click on the button labeled `AS`, that will resize the plot to fit the existing values. This is your distribution of energies.

Now, you will fit a Maxwell-Boltzmann distribution to this plot and find out the temperature that the distribution corresponds to. (Hopefully, the temperature you wanted to have in your simulation!)



Maxwell-Boltzmann distribution for kinetic energy.

$$f(\epsilon_k) = \frac{2}{\sqrt{\pi}} \frac{1}{(k_B T)^{\frac{3}{2}}} \sqrt{\epsilon_k} \exp\left(-\frac{\epsilon_k}{k_B T}\right)$$

- * **19** Choose the `Data` → `Transformations` → `Non-linear curve fitting...` menu item. In the `Source` → `Set` window, click on the last line, which corresponds to the histogram you created.
- * **20** In the Main tab, type in the Formula window:


```
y = (2/ sqrt(Pi * a0^3 )) * sqrt(x) * exp (-x / a0)
```

 This will fit the curve and get a fit for the parameter `a0`, which corresponds to $k_B T$ in units of kcal/mol. (These are the energy units that NAMD uses)
- * **21** In the `Parameters` drop-down menu, choose 1. Fill-in forms will appear below. You can give an initial value to `A0`, so that the iterations will look for a value in the vicinity of your initial guess. In the `A0` window, type 0.6, which in kcal/mol corresponds to a temperature of $\sim 300K$.

Maxwell-Boltzmann Energy Distribution

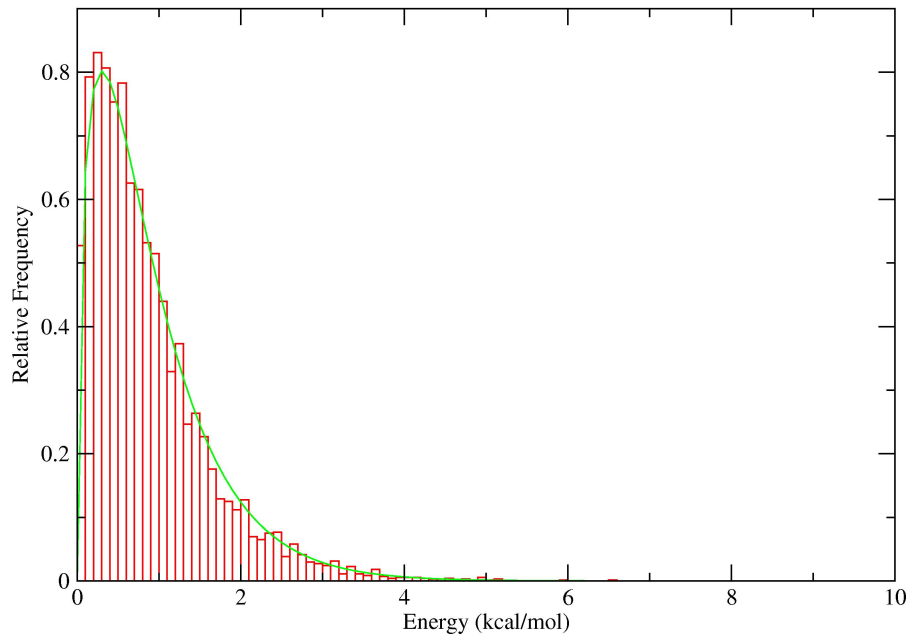


Figure 10: Maxwell-Boltzmann distribution for kinetic energies.

- * **22** Click on the **Apply** button. This will open a window with the new value for **a0**, as well as some statistical measures, including the **Correlation Coefficient**, which is a measure of the fit (better fit as it approaches 1). You can click on the **Apply** button of the **Non-linear fit** window several times to obtain a better fit.
- * **23** The value of **a0** you obtained corresponds to $k_B T$. Obtain the temperature T for this distribution with $k_B = 0.00198657 \frac{\text{kcal}}{\text{molK}}$. Your result is hopefully close to 310K!

The deviation from your value and the expected one is due to the poor sampling as well as to the finite size of the protein; the latter implies that temperature can be “measured” only with an accuracy of about $\pm 10K$ even in case of perfect sampling.

- * **24** When you are finished investigating the histogram and fit, close **xmgrace**, saving your work if you wish.

2.1.3 Energies

Objective: Calculate the averages of the various energies (kinetic and the different internal energies) over the course of a simulation.

You will look at the kinetic energy and all internal energies: bonded (bonds, angles and dihedrals) and non-bonded (electrostatic, van der Waals) over the course of the water box simulation which you ran in the previous unit. This section will introduce you to a tcl script called `namdstats.tcl` which is very useful for calculating average energy data for a simulation or extracting energy data over time.

* 1 In a Terminal, go to the directory `2-3-energies/`

We will investigate the simulation you ran in directory `../1-3-box/`. `Namdstats.tcl` will search all the information in the NAMD output file and extract the energy data for you. You should investigate it with your text editor to familiarize yourself with it.



Tcl and namdstats. `namdstats.tcl` was written in tcl so as to be callable directly from VMD. As such, it is platform independent. However, there are more efficient ways to perform some of the tasks in the script for Unix users. A version of `namdstats` for the c shell is available at <http://www.ks.uiuc.edu/Research/namd/utilities/>

* 2 Open VMD by typing `vmd` in the Terminal window.



Launch VMD. Open VMD graphically by double-clicking on the VMD icon under Applications in the Finder.

* 3 In the VMD TkCon window, navigate to the `2-3-energies/` using the `cd` command if you are not already there.

* 4 To use the script, type

```
source namdstats.tcl
data_avg ../1-3-box/ubq_wb_eq.log 101 last
```

The first line will source the script itself, and the second will call a procedure which will calculate the average for all output variables in the log file from the first logged timestep after 101 to the end of the simulation.

Namdstats.tcl. The tcl script `namdstats.tcl` contains two procedures that you may wish to call depending on what you would like to calculate. The procedures are called after sourcing the script.

The first procedure is `data_avg`. It will output the average of all energies that NAMD calculates over any timestep range you specify. It is called in the following way:

```
data_avg <logfile> [<first timestep> <last timestep>]
```



where `<logfile>` is the NAMD logfile of your run and specifying a first and last timestep together is optional. Omitting them will run the analysis from the start of the simulation to its end, and specifying them as "first" or "last" will have the analysis performed from the first timestep or to the last timestep of the simulation.

The second procedure is `data_time`. It will output a stream of timestep and energy values for whichever energy type you choose and over any timestep range you specify. The output will be placed in a file `<data stream>.dat`. It is called in the following way:

```
data_time <data stream> <logfile> [<first timestep>
<last timestep>]
```

where `<data stream>` is one of the energy values that NAMD outputs.

- * 5 The output of `namdstats.tcl` should appear similar to that in Table 1. Note that the standard units used by NAMD are Å for length, kcal/mol for energy, Kelvin for temperature, and bar for pressure.

The temperature of your system should be close to 310 K, the temperature we specified for the water box simulation. It will not be exact because temperature fluctuations occur due to the finite size of the system. We will investigate these fluctuations in the next section.

2.1.4 Temperature distribution

Objective: Simulate ubiquitin in an NVE ensemble, and analyze the temperature distribution.

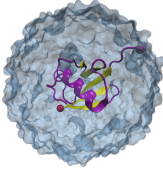
- * 1 In a Terminal window, go to the directory `2-4-temp/`.

For this exercise, you need a simulation that is long enough to sample the quantity of interest very well. Here, we need to sample the fluctuations in kinetic energy, and hence in the temperature. Instead of doing such a simulation yourself, we recommend that you use the provided file `example-output/ubq-nve.log`. However, if you choose to run your own simulation, you can find all the necessary files and instructions below. We recommend that you read the whole section even if you don't perform the simulations.

BOND:	232.561128
ANGLE:	690.805988
DIHED:	397.649676
IMPRP:	41.250136
ELECT:	-23674.863868
VDW:	1541.108344
BOUNDARY:	0.0
MISC:	0.0
KINETIC:	4579.147764
TOTAL:	-16192.340832
TEMP:	313.429264
TOTAL2:	-16173.821268
TOTAL3:	-16174.663916
TEMPAVG:	313.140436
PRESSURE:	-47.513352
GPRESSURE:	-19.105588
VOLUME:	71087.006196
PRESSAVG:	3.340104
GPRESSAVG:	3.4207

Table 1: Typical output from the script `namdstats.tcl`. Units are Å for length, kcal/mol for energy, Kelvin for temperature, and bar for pressure.

Temperature. The temperature of an ensemble is defined as:

$$T = \frac{2}{3Nk_B} \sum_{j=1}^N \frac{1}{2} m_j \vec{v}_j^2$$


This expression follows from the equipartition theorem of statistical mechanics applied to the kinetic energy

$$\left\langle \sum_{j=1}^N \frac{1}{2} m_j \vec{v}_j^2 \right\rangle = \frac{3}{2} N k_B T$$

where N is the number of atoms in the system.

The simulation is performed in the microcanonical ensemble (NVE, i.e., constant number, volume, and energy). The configuration file provided to start the NAMD run is called `ubq-nve.conf`. The main features of this configuration file are:

- The simulation takes the restart files from the sphere equilibration simulation performed in Unit 1. The files are located in directory `1-2-sphere/` and are named `ubq_ws`, i.e., `ubq_ws.restart.vel`, etc.

- The initial temperature is determined by the velocity restart file as shown in equation above. This initial temperature corresponds to $T \sim 313\text{K}$, the temperature of the water sphere simulation.
- The time step is 2 fs; with `rigidBonds` turned on, this time step is acceptable.
- The simulation will run for 1 ns.

2 Run the Molecular Dynamics simulation



Running. Run your simulation by typing in a Terminal window:

```
namd2 ubq-nve.conf > ubq-nve.log &
```

- * **3** If you do not run the simulation yourself, you will need to obtain the data for the temperature from the provided log file. Copy this log file from the directory `example-output/`.

```
cp example-output/ubq-nve.log .
```

If you run the simulation yourself, your log file will be generated by NAMD, and you do not need to copy it.

- * **4** In the VMD TkCon window, navigate to the `2-4-temp/` directory by typing `cd ../2-4-temp/`

- * **5** In order to obtain the data for the temperature from the log file we will again use the script `namdstats.tcl`, which we have already sourced. Do this by typing:

```
data_time TEMP ubq-nve.log
```

Each timestep and the corresponding temperature of the system is now in the file `TEMP.dat`. The script will include all timesteps and it may take some time to finish. Note there is no minimization of the system since this was already performed in the initial simulation.

In order to plot the data, you can use `xmgrace`.

- * **6** Open `xmgrace`.
- * **7** Choose the `Data` → `Import` → `ASCII` menu item. Select the file `TEMP.dat`. You should see a black trace. This is a plot of the temperature over time.
- * **8** To look at the distribution of points, you will make a histogram with this data. Choose the `Data` → `Transformations` → `Histograms...` menu item. In the `Source` → `Set` window, click on the first line, in order to make a histogram of the data you just loaded.

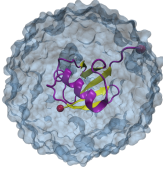
- * 9 Click on the Normalize option, and fill in Start: 300, Stop at: 330, and # of bins 100. Click Apply.
- * 10 You created a plot, but you cannot see it yet. Use the right button of your mouse to click on the first set (in the Source → Set window). Click on Hide. Now, go to the Main window and click on the button labeled AS, that will resize the plot to fit the existing values. This is your distribution of temperatures.

Does this distribution look any familiar? Your distribution should look like a Gaussian distribution.

Temperature fluctuations. The Maxwell distribution for individual kinetic energies ϵ_n in its differential form is:

$$dP(\epsilon_n) = \frac{1}{(\pi T_0 \epsilon_n)^{\frac{1}{2}}} \exp \frac{-\epsilon_n}{k_B T_0} d\epsilon_n$$

One can derive:

$$\begin{aligned} \langle \epsilon_n \rangle &= \frac{1}{2} T_0 k_B \\ \langle \epsilon_n^2 \rangle &= \frac{3}{4} (T_0 k_B)^2 \\ \langle \epsilon_n^2 \rangle - \langle \epsilon_n \rangle^2 &= \frac{1}{2} (T_0 k_B)^2 \end{aligned}$$


The distribution of the total kinetic energy $E_k = \sum_j \frac{1}{2} m_j v_j^2$, according to the central limit theorem, is approximately Gaussian

$$P(E_k) = c e^{-\frac{(E_k - \langle E_k \rangle)^2}{3Nk_B^2 T_0^2}}$$

The distribution function for the temperature $T = 2E_k/3k_B$ fluctuations $\Delta T = T - T_0$ is then

$$P(\Delta T) = c e^{-\frac{(\Delta T)^2}{2\sigma^2}}, \sigma^2 = 2T^2/3N$$

Note that for $N \rightarrow \infty$ the distribution is very sharp, but for a finite system it is always broad. For $T = 300K$ and $N = 1000$ one has $\sigma \sim 8K$.

- * 11 You will now fit your distribution to a normal distribution. For this, you will use the Non-linear curve fitting feature of `xmgrace`.
- * 12 Choose the Data → Transformations → Non-linear curve fitting... menu item. In the Source → Set window, click on the last line, which corresponds to the histogram you created.
- * 13 In the Main tab, type in the Formula window:
`y= a0 * exp(-(x-a1)^2/a2)`

- * 14 In the **Parameters** drop-down menu, choose 3. Fill-in frames will appear below. Give **A0** an initial value of 1, **A1** an initial value of 315 (you can see that the center of the Gaussian is around that value), and **A2** a value of 2. Click several times on the **Apply**, to get a better fit.

This will fit the curve and get values for the parameters **a0**, **a1** and **a2**, where **a0** is a normalization constant, **a1** the average temperature, and **a2** is σ^2 .

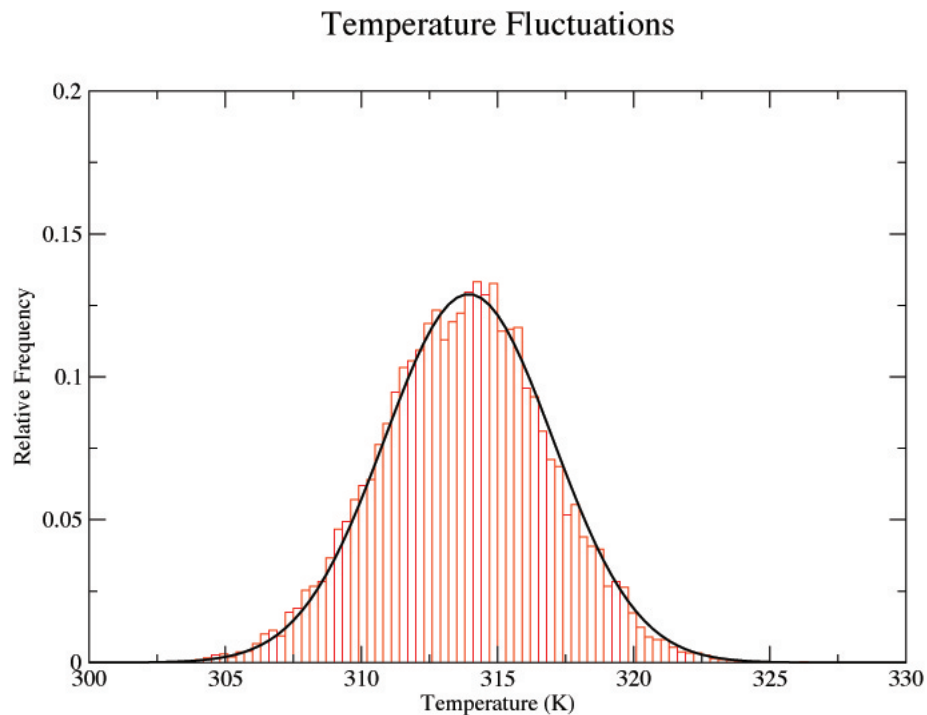


Figure 11: Fluctuation of Temperature in a Finite Sample

The window that appeared contains the new value of the parameters, as well as some statistical measures, including the **Correlation Coefficient**, which is a measure of the fit.

- * 15 Compare the average value of the temperature obtained by this method with the one you would obtain using `namdstats` by typing in the VMD TkCon window:

```
data_avg ubq-nve.log
```

- * 16 Now, look at the deviation $\sigma^2 = 2T^2/3N$ which can be calculated from your data. Note how it is dependent on the size of the system!

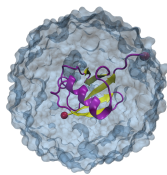
Take home message: You may note from this example that single proteins, on one hand, behave like infinite thermodynamic ensembles, reproducing the respective mean temperature. On the other hand, they show signs of their finiteness in the form of temperature fluctuations. In general, it is interesting to note that the velocities of the atoms and, therefore, the kinetic energy of the protein serves as its thermometer!

* 17 When you are finished investigating the histogram and fit, close `xmgrace`, saving your work if you wish.

2.1.5 Specific Heat

Objective: Find the specific heat of ubiquitin.

Specific heat is an important property of thermodynamic systems. It is the amount of heat needed to raise the temperature of an object per degree of temperature increase per unit mass, and a sensitive measure of the degree of order in a system. (Near a bistable point, the specific heat becomes large.)



Energy fluctuations and specific heat. In the canonical ensemble, the specific heat is defined as:

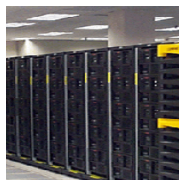
$$c_V = \frac{\langle E^2 \rangle - \langle E \rangle^2}{k_B T^2}$$

For this exercise, you need to carry out a long simulation in the NVT (canonical) ensemble that samples sufficiently the averages $\langle E^2 \rangle$ and $\langle E \rangle$ that arise in the definition of c_V . To produce the data for the total energy of the molecule over time, you need to work through the steps presented below. This exercise is long and computationally intensive. You may wish to work only through the steps marked with *, that correspond to the analysis of the data. Nevertheless, we encourage you to read through the whole section since it will provide you with tools for future analysis.

* 1 In a Terminal windows, change to the directory `2-5-spec-heat/`.

In order to produce an NVT run, you will restart the equilibration you performed in Unit 1 for the water sphere. All necessary files are present in your directory.

2 Run the Molecular Dynamics simulation



Running. Run your simulation by typing in a Terminal window:

```
namd2 ubq-nvt.conf > ubq-nvt.log &
```



Trajectory writing frequency. This configuration file will save frames to the dcd very often. This will result in large output files. Make sure you revise this configuration file for later use, as normally you won't need this massive kind of output.

- * **3** If you do not run the simulation yourself, you will need to obtain the trajectory that has been provided. Copy the simulation output from the directory `example-output/` by typing in a Terminal window:

```
cp example-output/ubq-nvt* .
```

If you run the simulation yourself, your output will be generated by NAMD, and you do not need to copy it.

You now have an equilibration run of ubiquitin in the NVT ensemble, and you want to look at the fluctuation in the energy of ubiquitin. In order to calculate the specific heat for the protein only (as opposed to the whole system), you need the total energies for the atoms in the protein only, however the NAMD output for the run you just performed contains the energies for all atoms in the system.

You would like NAMD to write the energies for only a part of the system, rather than for the entire system, as is reported in the log file. One way to do this is to run a separate simulation with only the part of the system you are interested in, but this may be unrealistic from a biological standpoint. Fortunately, VMD has a plugin which will call NAMD and allow you to calculate energies for any part of your system that you specify.

- * **4** In the VMD TkCon window, navigate to the `2-5-spec-heat/` directory:

```
cd ../2-5-spec-heat/
```

- * **5** **If you did not run the simulation, and copied output from the example-output directory, please skip this step. If you ran the simulation yourself, perform this step and skip the next one.**

Load the psf file and trajectory for your system.

```
mol new ../common/ubq_ws.psf
mol addfile ubq-nvt.dcd
```

- * **6** Load the psf file and trajectory for the `example-output` system.

```
mol new ../common/example-output/ubq_ws.psf
mol addfile ubq-nvt.dcd
```

- * **7** In the VMD Main window, open the NAMD Energy plugin by clicking Extensions → Analysis → NAMD Energy.

- * **8** In the NAMD Energy window, select the following inputs:

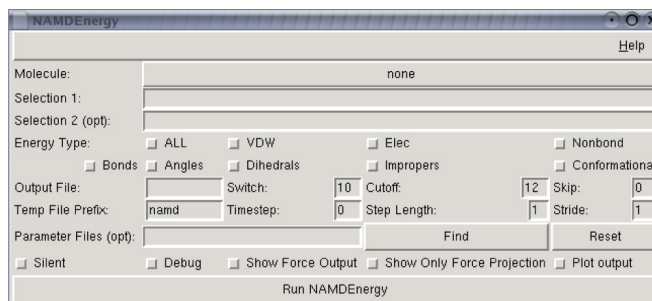


Figure 12: NAMD Energy GUI (Graphical User Interface)

- Molecule: `ubq_ws.psf`
- Selection 1: `protein`
- Energy Type: ALL
- Output File: `myenergy.dat`
- Parameter Files: `../common/par_all127_prot_lipid.inp`

All other parameters are chosen by default and are consistent with the specifications of your simulation. For more information on NAMD Energy's options, click `Help` → `Help...`

- * **9** Click `Run NAMDEnergy` to perform the analysis. Output will be written in the `vmd` console window. When you are finished, close the `NAMDEnergy` window. (Note that NAMD Energy may give you an error message if it cannot find NAMD installed. You may need to point it to the location of NAMD on your computer.) This analysis may take several minutes to be completed.

Now you have a file called `myenergy.dat` which contains the energy of only the ubiquitin protein atoms in your system. In order to calculate the specific heat of the molecule, we must derive both the *average* and *squared-average* total energy of the molecule from this data. We will use a `tcl` script to do so.

- * **10** In the `VMD TkCon` window, source the script to calculate the average total energy of ubiquitin for your simulation:

```
source average.tcl
```

The script will search your output file for the total energy data for the system, calculate both the average and squared-average total energy over all timesteps, and output the values for you. You should become familiar with the script to fully utilize the power of `Tcl` scripting in analyzing NAMD output. This script will teach you how to read input files, extract data from them, and perform calculations on that data.

- * 11 Calculate the specific heat for ubiquitin using the equation provided in the **Energy fluctuations and specific heat** box at the beginning of this section. Consider $k_B = 0.00198657 \frac{\text{kcal}}{\text{molK}}$ and $T = 310\text{K}$. What is your result? Try to convert your results to units of specific heat used everyday, i.e., $J/(\text{kg } ^\circ\text{C})$ using the conversion factor $1 \text{ J} = 1.43846 \times 10^{20} \text{ kcal/mol}$. Note that this units correspond to the specific heat per unit mass. You calculated the fluctuation in the energy of the whole protein, so you must take into account the mass of your protein by dividing your obtained value by $m = 1.4219 \times 10^{-23} \text{ kg}$. Compare with some specific heats that are given to you in Table 2.

Substance	Specific Heat $J/(\text{kg } ^\circ\text{C})$
Human Body(average)	3470
Wood	1700
Water	4180
Alcohol	2400
Ice	2100
Gold	130
Strawberries	3890

Table 2: Specific heat of several substances. Data obtained from http://www.yesican.yorku.ca/home/sh_table.html and http://www.eng.auburn.edu/users/wfgale/usda_course

- * 12 Delete the current displayed molecule in VMD using the VMD Main window by clicking on `ubq_ws.psf` in the window, and selecting **Molecule** → **Delete Molecule**.

2.2 Non-equilibrium

In this section, you will analyze two non-equilibrium properties of proteins, the diffusion of heat and a phenomenon known as temperature echoes. This section requires some knowledge of the principles of statistical physics, but the results of the simulations can be understood intuitively even without a deep understanding of their principles.

2.2.1 Heat Diffusion

Objective: Simulate cooling of the ubiquitin molecule and determine, from the results of your simulation, the thermal diffusivity of your system.

For this exercise, you will use the last step of the equilibration of ubiquitin in a water sphere, file `ubq_ws_eq.restart.coor`. You will use the temperature coupling feature of NAMD to set the temperature of the molecules in the outer layer of the sphere to 200 K, while the rest of the bubble is set to a temperature of 300 K. In this way, you will determine the thermal diffusivity by monitoring change of the system's temperature and comparing it to the theoretical expression.

Heat diffusion. Time dependence of the local temperature $T(\vec{r}, t)$ is governed by the heat diffusion equation

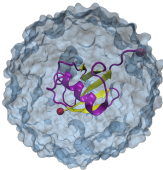
$$\frac{\partial T(\vec{r}, t)}{\partial t} = D\nabla^2 T(\vec{r}, t),$$

subject to the initial and boundary conditions, which for a sphere of radius R are

$$T(\vec{r}, 0) = \langle T_{sim} \rangle(0), \quad \text{for } |\vec{r}| < R,$$

$$T(\vec{r}, t) = T_{bath}, \quad \text{for } |\vec{r}| \geq R,$$

where D is the thermal diffusivity, T_{sim} is the initial temperature of the sphere, and T_{bath} is the temperature of the sphere's boundary. The average temperature of such a system depends on time as

$$\langle T \rangle(t) = T_{bath} + 6 \frac{T_{sim} - T_{bath}}{\pi^2} \sum_{n=1}^{\infty} \frac{1}{n^2} \exp \left[- \left(\frac{n\pi}{R} \right)^2 Dt \right].$$


* 1 Change to this problem's directory in a Terminal window:

```
cd ../2-6-heat-diff/
```

In order to use the temperature coupling feature of NAMD, you need to create a file which marks the atoms subject to the temperature coupling. The following lines

```
tCouple on
tCoupleTemp 200
tCoupleFile ubq_shell.pdb
tCoupleCol B
```

in the provided configuration file `ubq_cooling.conf` will enable this feature, and set the atoms coupled to the thermal bath as the ones that have a value of 1.00 in the B column of the `ubq_shell.pdb`, which you will create below.

* 2 In the VMD TkCon window, navigate to the `2-6-heat-diff/` directory.

```
cd ../2-6-heat-diff/
```

* 3 Load the system into VMD by typing the following in the VMD TkCon window:

```
mol new ../common/ubq_ws.psf
mol addfile ../1-2-sphere/ubq_ws_eq.restart.coor
```


- 4 Select all atoms in the system:

```
set selALL [atomselect top all]
```

- 5 Find the center of the system:

```
set center [measure center $selALL weight mass]
```

- 6 Find x , y and z coordinates of the system's center and place their values in the variables `xmass`, `ymass`, and `zmass`:

```
foreach {xmass ymass zmass} $center { break }
```

- 7 Select atoms in the outer layer:

```
set shellSel [atomselect top "not ( sqrt(x-$xmass)
+ sqrt(y-$ymass) + sqrt(z-$zmass) <= sqrt(22) ) "]
```

- 8 Set beta parameters of the atoms in this selection to 1.00:

```
$shellSel set beta 1.00
```

- 9 Create the pdb file that marks the atoms in the outer layer by "1.00" in the beta column:

```
$selALL writepdb ubq_shell.pdb
```

- 10 Run the Molecular Dynamics simulation



Running. Run your simulation by typing in a Terminal window:

```
namd2 ubq_cooling.conf > ubq_cooling.log &
```

- * 11 If you do not run the simulation yourself, you will need to obtain the data for the temperature from the provided log file. Copy this log file from the directory `example-output/`.

```
cp example-output/ubq_cooling.log .
```

If you run the simulation yourself, your log file will be generated by NAMD, and you do not need to copy it.

- * 12 Use `namdstats.tcl` to find out how the system's temperature changes with time. In the VMD TkCon window, type:

```
source ../2-3-energies/namdstats.tcl
data_time TEMP ubq_cooling.log
```

The file `TEMP.dat` will be written with the temperature of the system over time.

- * 13 You can now quit VMD.

- * **14** In a Terminal window, type `xmgrace TEMP.dat`
- * **15** In the `xmgrace` program, choose the `Data` → `Transformations` → `Geometrical transform ...` menu item. In the `Scale X:` window, type 2.0, which corresponds to the time step used in your simulation. Press `Accept`, which will rescale the plot such that the x -axis is now in units of fs. Now, press the `AS` button in the upper left hand corner of the `xmgrace` window to auto-scale your plot.
- * **16** Double-click on the y -axis of the plot and enter a value of 320 in the `Stop` field. Click `Accept`.
- * **17** You will now fit the simulated temperature dependence to the theoretical expression. For this, you will use the `Non-linear curve fitting` feature of `xmgrace`.
- * **18** Choose the `Data` → `Transformations` → `Non-linear curve fitting...` menu item. In the `Source` → `Set` window, click on the last line, which corresponds to the simulated time dependence.
- * **19** In the `Main` tab, type or copy and paste over the `Formula` window (make sure it is on one line):

$$y = 200 + 66.87 * (\exp(-0.0146 * a_0 * x) + 0.25 * \exp(-0.25 * 0.0146 * a_0 * x) + 1/9 * \exp(-1/9 * 0.0146 * a_0 * x) + 1/16 * \exp(-1/16 * 0.0146 * a_0 * x) + 1/25 * \exp(-1/25 * 0.0146 * a_0 * x) + 1/36 * \exp(-1/36 * 0.0146 * a_0 * x) + 1/49 * \exp(-1/49 * 0.0146 * a_0 * x) + 1/64 * \exp(-1/64 * 0.0146 * a_0 * x) + 1/81 * \exp(-1/81 * 0.0146 * a_0 * x) + 1/100 * \exp(-1/100 * 0.0146 * a_0 * x))$$
- * **20** In the `Parameters` drop-down menu, choose 1. Windows will appear below. Click several times on `Apply`, to get a better fit. This will fit the curve and get a value for the parameter `a0`, which is the thermal diffusivity.
- * **21** Multiply the value of the `a0` parameter by 0.1 to get the thermal diffusivity in cm^2s^{-1} . You should get a value of around $0.45 \times 10^{-2} \text{cm}^2\text{s}^{-1}$. How does your result compare to the thermal diffusivity of water $D = 1.4 \times 10^{-3} \text{cm}^2\text{s}^{-1}$?
- * **22** Compute the thermal conductivity of the system, K , by the following formula: $K = \rho c_V D$, where c_V is the specific heat (that was calculated in Section 2.1.5) and D is the thermal diffusivity (assume that the density of the system, ρ , is 1 g/mL).
- * **23** When you are finished investigating the plot, close `xmgrace`, saving your plot if you wish.

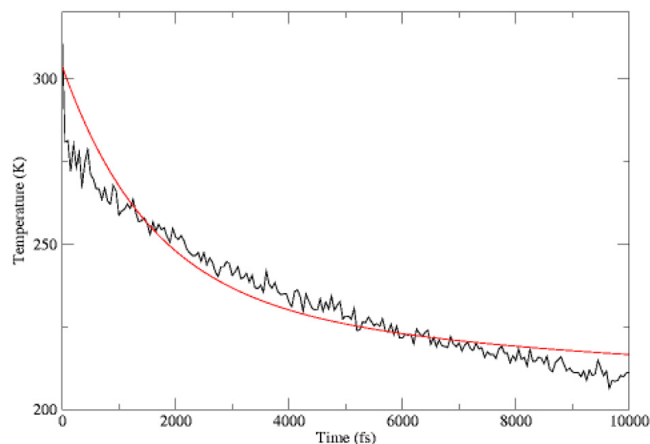


Figure 13: Cooling of ubiquitin in a water sphere. The red line shows a non-linear fit of the data to the theoretical expression.

2.2.2 Temperature echoes

Objective: Demonstrate the coherent dynamics of proteins by generating temperature echoes using MD simulations.

The motions of atoms in globular proteins (e.g., ubiquitin), referred to as internal dynamics, comprise a wide range of time scales, from high frequency vibrations about their equilibrium positions with periods of several femtoseconds to slow collective motions which require seconds or more, leading to deformations of the entire protein.

The internal dynamics of these proteins on a picosecond time scale (high frequency) can be described as a collection of weakly interacting harmonic oscillators referred to as normal modes. Since normal modes are formed by linear superposition of a large number of individual atomic oscillations, it is not surprising that the internal dynamics of proteins on this time scale has a delocalized character throughout the protein. The situation is similar to the lattice vibrations (phonons) in a crystalline solid. Experimentally, there exist ways to synchronize, through a suitable signal or perturbation, these normal modes, forcing the system in a so-called (phase) coherent state, in which normal modes oscillate in phase. The degree of coherence of the system can be probed with a second signal which through interference with the coherent normal modes may lead to resonances, referred to as echoes, which can be detected experimentally. However, the coherence of atomic motions in proteins decays through non-linear

contributions to forces between atoms. This decay develops on a time scale τ_d which can be probed, e.g., by means of temperature echoes, and can be described by employing MD simulations.

In a temperature echo the coherence of the system is probed by reassigning the same atomic velocities the system had at an earlier time and then looking to an echo in the temperature at time τ_e , as a result of such reassignment. An example is shown in Fig. 14. At time $t_1 = 0$ the velocities of all atoms in the system are quenched; then, at $t_2 = \tau$ the atomic velocities are reassigned again (quenched) to their values at time $t_1 = 0$. As a result, a temperature echo, i.e., a sharp dip in $T(t)$, is detected at a subsequent time $\tau_e = \tau$ after t_2 (i.e., at time $t = 2\tau$).

In this section, you will employ MD simulations to generate temperature echoes in ubiquitin by applying the velocity reassignment just described. By modeling ubiquitin as a large collection of weakly interacting harmonic oscillators (normal modes), you will find that:

- the dephasing time τ_d of the oscillators is about one picosecond;
- the temperature echo can be expressed in terms of the temperature auto-correlation function; and
- the depth $\Delta T(\tau_e)$ of the echoes decay exponentially with the delay time τ_e , i.e., $\Delta T(\tau_e) \propto \exp(-\tau_e/\tau_d)$, the exponential decay being determined by the dephasing time τ_d .

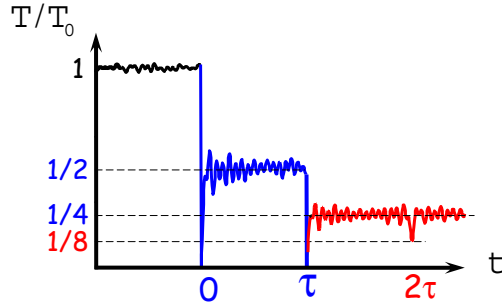
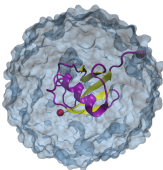


Figure 14: Temperature quench echo.

First you will generate temperature echoes in MD simulations, and then you will analyze the echoes in the framework of the normal mode approximation.



Temperature echoes. Temperature echoes are generated by reassigning twice, with a given time delay τ , the same (or scaled with the same constant factor) set of velocities to all the atoms of the protein. As a result, in general, the time evolution of the kinetic temperature

$$T(t) = \frac{2}{(3N-6)k_B T} \sum_{i=1}^{3N-6} \frac{m_i v_i^2}{2}$$

will acquire sharp features at $t = 0$ and $t = \tau$, due to the corresponding energy release or absorption. The spontaneous reappearance of a similar sharp, but less intense, feature in $T(t)$ at time(s) $t > \tau$ is referred to as temperature echo(es) (Fig. 14).

The phenomenon of temperature echoes has a simple explanation within the normal modes description of a protein. The first velocity reassignment enforces phase coherence for the oscillators. Because of the frequency dispersion of the normal modes (as well as the deviation from the harmonic approximation) the phase coherence of the protein will decay in time with a characteristic dephasing time $\tau_d \sim 1$ ps. The second velocity reassignment after a delay time τ is a “probing signal” which will test the degree of coherence of the system at the instant of time it was applied. The depth of the echo and the instant of time at which it occurs are quantitative characteristics of the coherence of the internal dynamics of proteins.

In order to generate temperature echoes, one needs to equilibrate ubiquitin at the desired initial temperature $T_0 = 300$ K, e.g., by using the velocity rescaling method. Once the system is equilibrated, the thermostat is removed and all the following simulations are carried out in the microcanonical (NVE) ensemble.

In this section, you will consider two types of temperature echoes. In the first, you will reassign all atomic velocities to zero, and in the second, you will reassign the atomic velocities to a 300 K distribution (the same as the initial temperature of the system) and the second reassignment will be exactly the same as the first.

Temperature quench echo

The temperature quench echo is obtained by resetting to zero the velocity of all atoms of the protein at both times $t_1 = 0$ and $t_2 = \tau$. You should start from the pre-equilibrated protein in vacuum at $T_0 = 300$ K; the required files are located in the `common` directory.

You need to run the simulations in the microcanonical ensemble (NVE) by using the configuration file `equil.conf` in the `2-7-echoes/01_equil_NVE` directory. The simulation will run for 500 time steps (fs).

- * **1** Change to the `2-7-echoes/01_equil_NVE` directory in a Terminal window.

Let's take a look at some features in the `equil.conf` configuration file. You can read the file using `edit`.

- The simulation takes restart files, i.e., the coordinate file and the velocity file, from an equilibration simulation at $T = 300K$.

```
# Continuing a job from the restart files
set inputname      ../common/ubi_equil
binCoordinates     $inputname.restart.coor
extendedSystem     $inputname.xsc
```

- Notice that the `temperature` line is commented out. The initial temperature is pre-defined by the initial velocities.

```
#temperature      $temperature
binvelocities      $inputname.restart.vel
```

- Since you are running an NVE simulation, there is no temperature coupling or pressure control.
- As discussed previously, one should use `rigidBonds` for water in any production simulation since water molecules have been parametrized as rigid molecules. But for the illustration of temperature quench echo, the effect of force field can be negligible. To be simple, the `rigidBonds` option is turned off.

* 2 Close the configuration file and `edit`.

3 Run the Molecular Dynamics simulation



Running. Run your simulation by typing in a Terminal window:

```
namd2 equil.conf > equil.log &
```

* 4 If you do not run the simulation yourself, you will need to obtain the data for the temperature from the provided log file. Copy this log file from the directory `example-output/`.

```
cp example-output/equil.log .
```

If you run the simulation yourself, your log file will be generated by NAMD, and you do not need to copy it.

* 5 Open VMD by typing `vmd` in the Terminal window.



Launch VMD. Open VMD graphically by double-clicking on the VMD icon under `Applications` in the `Finder`.

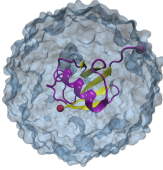
- * 6 Once your job is done, you need to get the temperature data from the output file. In the VMD TkCon window (Extensions → Tk Console), navigate to the 2-7-echoes/01_equil_NVE directory if you are not already there.

- * 7 Get the temperature data at every timestep using our `namdstats.tcl` script:

```
source ../../2-3-energies/namdstats.tcl
data_time TEMP equil.log
```

This will write the data into the file `TEMP.dat`.

- * 8 You will now calculate the temperature autocorrelation function, which will be used later to analyze the temperature echoes.



Temperature Autocorrelation Function.

$$C_{T,T}(t) = \frac{\langle T(t)T(0) \rangle - \langle T(0) \rangle^2}{\langle [T(t)]^2 \rangle - \langle [T(0)] \rangle^2}$$

$$\approx \exp(-t/\tau_0)$$

- * 9 A tcl script has been provided for you to calculate the temperature autocorrelation function. Source the script by typing in the VMD TkCon window:

```
source auto-corr.tcl
```

This will put the temperature autocorrelation function in the file `auto-corr.dat`.

- * 10 In a Terminal window, type

```
xmgrace auto-corr.dat
```

A plot of the temperature autocorrelation function will appear.

You will now fit the simulated temperature autocorrelation function to a decaying exponential approximation (see the Science Box). For this, you will use the `Non-linear curve fitting` feature of `xmgrace`.

- * 11 Choose the `Data` → `Transformations` → `Non-linear curve fitting...` menu item. In the `Source` → `Set` window, click on the only data set shown, which corresponds to the autocorrelation function.

- * 12 In the `Main` tab, type the following into the `Formula` window:

```
y = exp(-x/a0)
```

- * 13 In the `Parameters` drop-down menu, choose 1. Windows will appear below. Click several times on `Apply`, to get a better fit. This will fit the curve and get a value for the parameter `a0`. This parameter is the decay (temperature autocorrelation) time, τ_0 , and it will be important for a later analysis of your simulations.

- 14 If you prefer, double-click on the title area (above the graph), the x-axis, and the y-axis to enter suitable labels for your graph.
- * 15 When you are finished investigating the plot, close `xmgrace`, saving your plot if you wish.

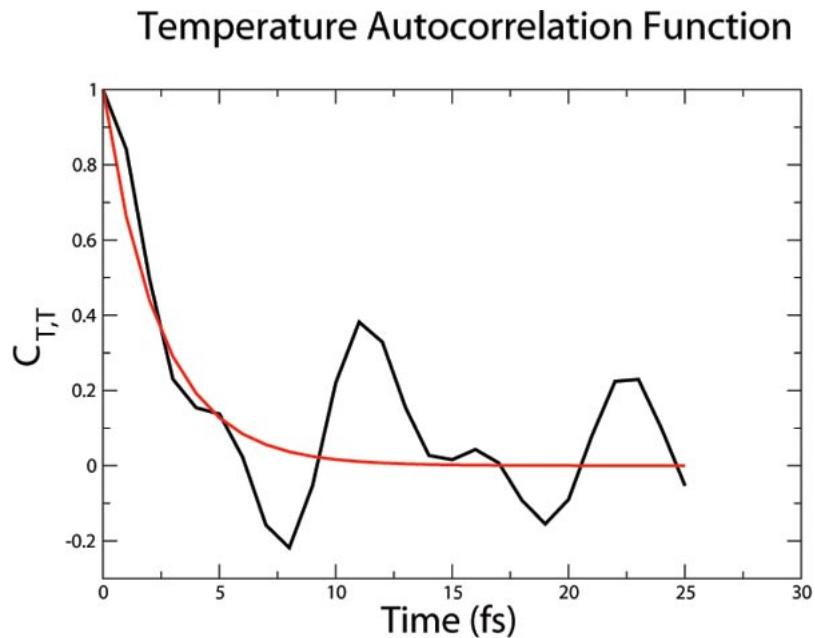



Figure 15: Temperature autocorrelation function from simulation (black) and a decaying exponential approximation (red).

- * 16 Go to the next directory, `02_quencha`, by typing in a Terminal window:
- ```
cd ../02_quencha
```
- \* 17 You will perform the temperature quenching experiment for the value  $\tau = 200fs$ . You are going to quench the temperature (set it to zero), and monitor the recovery of the system as it runs for  $\tau$  time steps. If you would like to probe other values of  $\tau$ , you should edit your configuration file `echo.conf` using `nedit`, changing the value of `tau`:
- ```
set tau 200
```

18 Run the Molecular Dynamics simulation



Running. Run your simulation by typing in a Terminal window:

```
namd2 echo.conf > echo.log &
```

- * **19** If you do not run the simulation yourself, you will need to obtain the data for the temperature from the provided log file. Copy this log file from the directory `example-output/`.

```
cp example-output/echo.log .
```

 If you run the simulation yourself, your log file will be generated by NAMD, and you do not need to copy it.
- * **20** Once your job is done, you need to again get the temperature data from the output file. In the VMD TkCon window, navigate to the `2-7-echoes/02_quencha` directory.

- * **21** Get the temperature data at every timestep using our `namdstats.tcl` script, which we have already sourced:

```
data_time TEMP echo.log
```


This will write the data into the file `TEMP.dat`.

Now, you will quench the system for the second time.

- * **22** Change to the directory `03_quenchb` in a Terminal window.

Note that the configuration file `echo.conf` indicates that the simulation will run for 3τ steps: `run [expr 3*$tau]`

23 Run the Molecular Dynamics simulation



Running. Run your simulation by typing in a Terminal window:

```
namd2 echo.conf > echo.log &
```

- * **24** If you do not run the simulation yourself, you will need to obtain the data for the temperature from the provided log file. Copy this log file from the directory `example-output/`.

```
cp example-output/echo.log .
```

If you run the simulation yourself, your log file will be generated by NAMD, and you do not need to copy it.

- * **25** Again, get the temperature data from the output file. In the VMD TkCon window, navigate to the `2-7-echoes/03_quenchb` directory and get the temperature data at every timestep using our `namdstats.tcl` script:

```
data_time TEMP echo.log
```

This will write the data into the file `TEMP.dat`.

- * **26** In a Terminal window, change the name of this output file so as not to confuse it with the others:

```
mv TEMP.dat temp3.dat
```

- * **27** Copy the previous temperature output to this directory, changing their names as you do so:

```
cp ../01_equil_NVE/TEMP.dat ./temp1.dat
```

```
cp ../02_quencha/TEMP.dat ./temp2.dat
```

- * **28** Merge the three temperature data files into `temp.dat`:

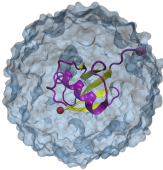
```
cat temp[1-3].dat > temp.dat
```

You now have the temperature data for the whole temperature quench experiment. You will use `xmgrace` to analyze the data.

- * **29** Examine the temperature profile across all three simulations by typing at a Terminal window:

```
xmgrace temp.dat
```

Note anything unusual? You quenched the temperature twice, and yet you see three drops in temperature! The third one is a temperature echo. See Fig. 16.



Harmonic Approximation. The temperature echo phenomenon can be understood by the harmonic approximation of protein motions. In this approximation, the protein dynamics are described by a collection of harmonic oscillators, with the overall motion is governed by the statistical average of them. Here we will only give the final expression of the temperature echoes in the harmonic approximation. If we set t_1 as the temporal origin, for time after t_2 , i.e., $t > \tau$, it can be shown that the expression of the temperature echoes from harmonic approximation is

$$T(t) \approx T_0 \left[\frac{1 + \lambda_1^2 + 2\lambda_2^2}{4} - \frac{1 + \lambda_1^2 - 2\lambda_2^2}{4} C_{T,T}(t - \tau) - \frac{\lambda_1 \lambda_2}{2} C_{T,T}(|t - \frac{3\tau}{2}|) - \frac{1 - \lambda_1^2}{8} C_{T,T}(|t - 2\tau|) \right], \quad (1)$$

where $\lambda_1 = \sqrt{T_1/T_0}$ and $\lambda_2 = \sqrt{T_2/T_0}$. $C_{T,T}$ is the temperature auto-correlation function obtained from simulations. For the temperature quench echo $T_1 = T_2 = 0$, and the above equation simplifies to

$$T(t) \approx \frac{T_0}{4} \left[1 - C_{T,T}(t - \tau) - \frac{1}{2} C_{T,T}(|t - 2\tau|) \right]. \quad (2)$$

Next, you will compare $T(t)$ in the vicinity of the echo ($t = 2\tau$) obtained from the MD simulation with the theoretical prediction (2) involving the temperature autocorrelation function obtained also from the MD simulations. The degree of agreement between these two results is a measure of the accuracy of the harmonic approximation.

- * **30** You will use a tcl script to calculate the harmonic approximation of the temperature echo, given by Eq. 1. Source the script by typing in the VMD TkCon window:

```
source harmonic.tcl
```

This will write the data for the harmonic approximation to the file `harmonic.dat`.

- * **31** In `xmgrace`, view the data by clicking `Data` \rightarrow `Import` \rightarrow `ASCII...` and choosing the file `harmonic.dat`. Click `OK`. Then, double click on the x-axis and change the axis `Stop` value to 1400 for better visualization.

You need to find the depth of the echo. From the graph, you can see that the echo occurs around 900 fs.

- * **32** Open the file `temp.dat` by typing `less temp.dat`.

- * **33** Scroll down to the temperature data near 900 fs, and find the minimum local value of temperature around that time. Record the value and calculate the depth of the echo by subtracting the value from 75:

Echo depth = 75 - Minimum Temperature
 75 is the average temperature after the second quench, and it corresponds to 1/4 of the initial temperature $T_0=300\text{K}$.

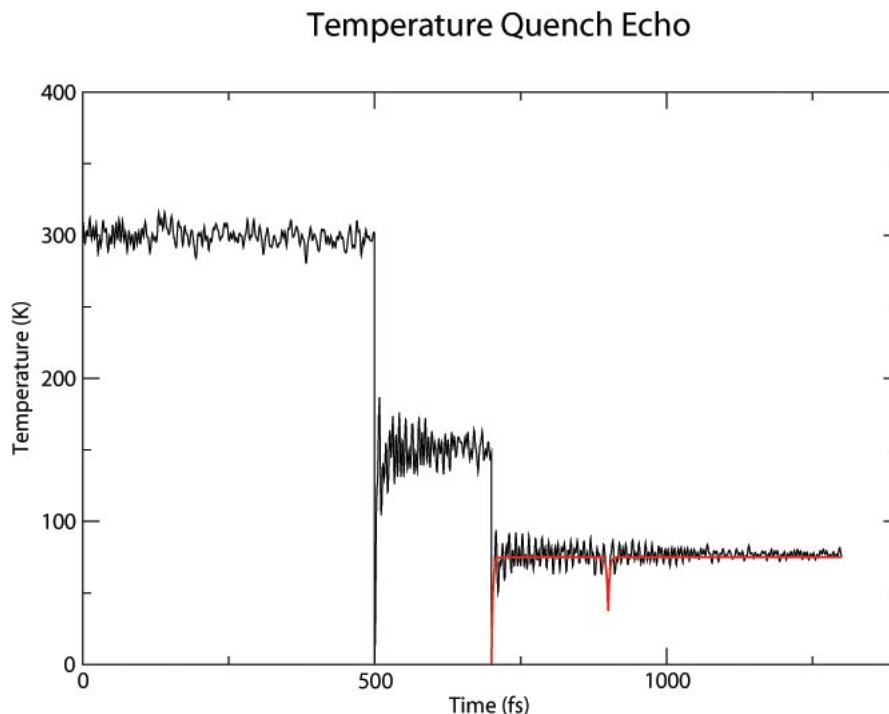


Figure 16: A comparison of the simulation and the expression from harmonic approximation at the vicinity of the echo.

You have calculated the echo depth for a particular value of the delay time $\tau = 200\text{fs}$. You may wish to repeat the experiment using other values of τ (100-800 fs). (You must alter the `harmonic.tcl` script.) If this is done and the data is plotted and fitted to a single exponential $\exp(-\tau/\tau_d)$, one obtains the so-called *dephasing* time τ_d , which is an inherent property of the system.

* **34** When you are finished investigating the plot, close `xmgrace`, saving your plot if you wish.

Velocity replacement echo

Here you will generate a temperature echo by replacing the velocities of the atoms at time t_2 with the ones you assign to them at time t_1 . Moreover, by choosing these velocities according to the Maxwell-Boltzmann distribution corresponding to $T_0 = 300\text{K}$, i.e., the temperature of the equilibrated system

($t < 0$), there will be no discontinuities (jumps) in $T(t)$ at t_1 and t_2 , yet you will observe a temperature echo at a later time, i.e., a sharp dip in the temperature at time $t = \tau + \tau_e$. Your goal is to determine τ_e and the depth ΔT of the echo. To this end, you will need to follow a similar procedure to the one in the previous exercise.

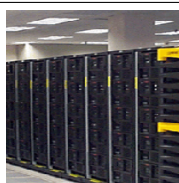
- * **35** In a Terminal window, navigate to the directory `04_consta`.
- * **36** Reassign the velocities at t_1 according to a Maxwell-Boltzmann distribution for a temperature $T_1 = 300K$, saving the reassigned velocities to a file `300.vel`. In order to do this, the following is added to the end of your configuration file `echo.conf`:

```
run 0
output 300
```

These settings will not really run a simulation, but will assign initial velocities with the desired distribution and save them to `300.vel`. Following these, the normal `run` command is used to perform a simulation for `tau` time steps:

```
run $tau
```

37 Run the Molecular Dynamics simulation



Running. Run your simulation by typing in a Terminal window:

```
namd2 echo.conf > echo.log &
```

- * **38** If you do not run the simulation yourself, you will need to obtain the data for the temperature from the provided log file. Copy this log file from the directory `example-output/`.

```
cp example-output/echo.log .
```

If you run the simulation yourself, your log file will be generated by NAMD, and you do not need to copy it.

- * **39** In the VMD TkCon window, navigate to the `04_consta` directory. Use the script `namdstats.tcl` to get the temperature data as before and put it in the file `TEMP.dat`. Note that at the beginning there is a duplicate entry for the first time step. You should delete one of these using your text editor:

```
500 300.5656
500 300.5656
501 301.0253
502 302.5395
...
```

* 40 In a Terminal window, go to the directory `05_constb`.

41 For this simulation, you should use the file `300.vel` you generated before as the velocity restart file. This is included in the configuration file `echo.conf` as:

```
velocities ../04_consta/300.vel
```

This will reassign the velocities to the exact same distribution they had at the beginning of the previous simulation. This simulation will run for 3τ time steps.

42 Run the Molecular Dynamics simulation



Running. Run your simulation by typing in a Terminal window:

```
namd2 echo.conf > echo.log &
```

* 43 If you do not run the simulation yourself, you will need to obtain the data for the temperature from the provided log file. Copy this log file from the directory `example-output/`.

```
cp example-output/echo.log .
```

If you run the simulation yourself, your log file will be generated by NAMD, and you do not need to copy it.

* 44 Again, in the VMD TkCon window, navigate to the `05_constb` directory and use the script `namdstats.tcl` to output the temperature data to the file `TEMP.dat`.

* 45 In a Terminal window, change the name of this output file and copy the other temperature file to this directory:

```
mv TEMP.dat temp2.dat
cp ../04_consta/TEMP.dat ./temp1.dat
```

* 46 Merge the two temperature data files into `temp.dat`:

```
cat temp[1-2].dat > temp.dat
```

* 47 Note that there are now two temperature values at 700 fs. You should open the file `temp.dat` with your text editor and delete one.

* 48 View the temperature data and observe the temperature echo using `xmgrace`:

```
xmgrace temp.dat
```

- * **49** Try to locate the time of the echo and find its depth by looking at the temperature data as before:

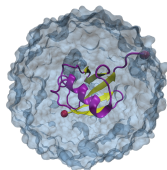
```
less temp.dat
```

This time, the depth of the echo is measured by:
Echo depth = 300 - Minimum Temperature
- * **50** Compare your result with the pre-made results stored in the directory `example_output` for $\tau = 200$ fs. How would you explain your findings?
- * **51** You can now close VMD and xmgrace.

3 Steered Molecular Dynamics

In this section you will learn how to use Steered Molecular Dynamics (SMD). In particular, you will explore elastic properties and unfolding pathways while becoming accustomed to constant velocity and constant force SMD simulations performed by NAMD.

- The basic idea behind any SMD simulation is to apply an external force to one or more atoms, which we refer to as SMD atoms. In addition, you can keep another group of atoms fixed and study the behaviour of your protein under various conditions.
- In the following simulations, you will fix one atom of ubiquitin and pull on another one and, thereby, stretch and unfold ubiquitin. Before running the actual simulations, you will prepare your system and create the files needed.



SMD. Steered Molecular Dynamics allows you to explore biological processes on time scales accessible to molecular dynamics simulations. For instance, unbinding of ligands and conformational changes in biomolecules (like those explored using Atomic Force Microscopy, AFM) can be studied using this technique.

3.1 Removing Water Molecules



Water Molecules. In actual SMD simulations water plays a fundamental role in unfolding pathways for proteins. Since the scope of this tutorial is to introduce NAMD by performing short simulations, we will remove water molecules in the next simulations. However, the reader should be aware that this step is done in order to save time when doing the tutorial. Removing water should be in principle avoided when doing simulations.

- 1 In a Terminal window, set your current directory as `namd-tutorial-files` using the `cd` command. Open a new session of VMD by typing `vmd`.



Launch VMD. Open VMD graphically by double-clicking on the VMD icon under Applications in the Finder. Then, navigate to the `namd-tutorial-files` directory by using the `cd` command in the VMD command terminal.

- 2 Choose the File → New Molecule... menu item of VMD. In the Molecule File Browser use the Browse... button to find the file `ubq_ws.psf` in the common directory. Load it by pressing the Load button. If you do not find the file, look for it in the `common/example-output/` directory.

- 3 In the VMD Main window your molecule should appear (ID 0).
- 4 In the Molecule File Browser window, use the Browse... and the Load buttons load the file `1-2-sphere/ubq_ws_eq.restart.coor` into your psf file. Be certain that the Load files for: field says `0:ubq_ws.psf`. If you have not done that exercise, a copy of the corresponding output files is provided in the subdirectory `1-2-sphere/example-output/`. When you are done, close the Molecule File Browser window.

Now you have the equilibrated ubiquitin in a water sphere loaded in VMD. The next step is to eliminate the water.

- 5 In the VMD TkCon window, type the following commands:


```
set selprotein [atomselect top protein]
$selprotein writepdb common/ubq_wv_eq.pdb
```

You have created a pdb file that contains the equilibrated protein without water.

- 6 Delete the current molecule by selecting it in the VMD Main window and choosing the Molecule → Delete Molecule menu item and keep VMD opened.

3.2 Constant Velocity Pulling

In this first simulation you will stretch ubiquitin through the constant velocity pulling method.

In this type of simulation the SMD atom is attached to a dummy atom via a virtual spring. This dummy atom is moved at constant velocity and then the force between both is measured using:

$$\vec{F} = -\nabla U \quad (3)$$

$$U = \frac{1}{2}k[v t - (\vec{r} - \vec{r}_0) \cdot \vec{n}]^2 \quad (4)$$

where:

- U → Potential energy.
- k → Spring constant.
- v → Pulling velocity.
- t → Time.
- \vec{r} → Actual position of the SMD atom.
- \vec{r}_0 → Initial position of the SMD atom.
- \vec{n} → Direction of pulling.

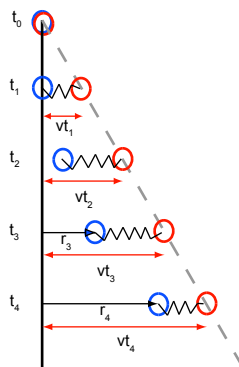


Figure 17: Constant velocity pulling in a one-dimensional case. The dummy atom is colored red, and the SMD atom blue. As the dummy atom moves at constant velocity the SMD atom experiences a force that depends linearly on the distance between both atoms.



Pulling more than one atom. The constant velocity method of pulling can also be used to pull multiple atoms. In that case, the position of the center of mass of the SMD atoms is attached to the dummy atom through the virtual spring.

3.2.1 Fixed and SMD Atoms

NAMD uses a column of a pdb file to determine which atoms are fixed: all atoms with a value of 1 (or a number different of 0) in a predetermined column will be fixed; atoms with a value of 0 in the same column will not be affected. Here you will use the B column of the pdb file to designate fixed atoms. Now you need to build the respective pdb file using VMD.

- 1 Choose the File → New Molecule... menu item and using the Browse... and Load buttons load the file `common/ubq.psf` that you created in the first unit for ubiquitin in vacuum. (If you did not succeed in generating this file in unit 1, look for `common/example-output/ubq.psf`)
- 2 In the Molecule File Browser window, use the Browse... and the Load buttons load the file `common/ubq_ww_eq.pdb` into your psf file. Be certain that the Load files for: field says `1:ubq.psf`. When you are done, close the Molecule File Browser window. The equilibrated ubiquitin without water is now available in VMD.
- 3 In the VMD TkCon window, write the following command:


```
set allatoms [atomselect top all]
```

 This creates a selection called `allatoms` which contains all atoms!

- 4 Type `$allatoms set beta 0`. In this way you set the B column of all atoms equal to 0.
- 5 Type `set fixedatom [atomselect top "resid 1 and name CA"]`. This creates a selection that contains the fixed atom, namely the C_α atom of the first residue.
- 6 Type `$fixedatom set beta 1`. This sets the value of the B column for the fixed atom to 1 and, therefore, NAMD will keep this atom now fixed.

Likewise, NAMD uses another column of a pdb file to set which atom is to be pulled (SMD atom). For this purpose it uses the occupancy column of the pdb file.

- 7 Type `$allatoms set occupancy 0`, so the occupancy column of every atom becomes 0.
- 8 Type `set smdatom [atomselect top "resid 76 and name CA"]`. The smdatom selection you created contains the C_α atom of the last residue.
- 9 Type `$smdatom set occupancy 1`. Now, the occupancy column of the smdatom selection is 1, and NAMD will pull this atom.
- 10 Finally, type `$allatoms writepdb common/ubq_ww_eq.ref`. This will write a file in pdb format that contains all the atoms with the updated B and occupancy columns. Keep VMD opened.
- 11 Take a look at the pdb file you have just created. Open a new Terminal window, and change the directory to namd-tutorial-files, by typing `cd Workshop/namd-tutorial-files`.
- 12 Open the file by typing `nedit common/ubq_ww_eq.ref`. Find the line or row that corresponds to the C_α atom as shown in Fig. 18 (a) for the methionine (b) residue number 1 (c) or N terminus. In that line you should be able to see how the B column was switched to 1 (e), while the B column for all the other atoms is 0 (d).

ATOM	3	HT2	MET	U	1	27.348	23.332	3.798	0.00	0.00	U
ATOM	4	HT3	MET	U	1	27.648	23.828	2.259	0.00	0.00	U
ATOM	5	CA	MET	U	1	26.005	24.871	3.172	0.00	1.00	U
ATOM	6	HA	MET	U	1	25.692	25.180	2.185	0.00	0.00	U
ATOM	7	CB	MET	U	1	24.781	24.550	4.087	0.00	0.00	U


Figure 18: Snapshot of the file `ubq_ww_eq.ref` showing the fixed atom row.

- 13 The file you just created (`common/ubq_ww_eq.ref`) also contains the appropriate information required by NAMD to identify the SMD atom. Again, check this by finding the row or line that corresponds to the C_α atom as shown in Fig. 19 (a) for the glycine (b) residue number 76 (c) or C terminus. This atom, that should have occupancy 1 (e), will be pulled in the simulation.


ATOM	1227	N	GLY	U	76	42.022	37.774	31.559	0.00	0.00	U
ATOM	1228	HN	GLY	U	76	41.224	37.182	31.643	0.00	0.00	U
ATOM	1229	CA	GLY	U	76	41.893	39.125	31.983	1.00	0.00	U
ATOM	1230	HA1	GLY	U	76	41.713	39.812	31.170	0.00	0.00	U
ATOM	1231	HA2	GLY	U	76	42.609	39.324	32.767	0.00	0.00	U

Figure 19: Snapshot of the file `ubq_ww_eq.ref` showing the SMD atom row.

- 14 When you are done with the comparison of your file with Figs. 18 and 19, close nedit. Note that coordinates (columns 7, 8, and 9) in your file will not necessarily match the ones shown in the figures because initial velocities in the equilibration were chosen randomly.



SMD atoms. Be sure to use the coordinates from the *equilibrated* protein for the file `common/ubq_ww_eq.ref`, so that the initial position of the dummy atom matches the initial coordinates of the SMD atom.



Fixed atoms. It is possible to use a column different from the B column to indicate to NAMD the appropriate fixed atoms. In order to do this you have to specify in the configuration file which column you want to use (X, Y, Z, O or B) with the parameter `fixedAtomsCol`.

Now that you have defined the fixed and SMD atom, you need to specify the direction in which the pulling will be performed. This is determined by the direction of the vector that links the fixed and the SMD atoms.

- 15 Type the following commands in the VMD TkCon window:

```
set smdpos [lindex [$smdatom get {x y z}] 0]
set fixedpos [lindex [$fixedatom get {x y z}] 0]
vecnorm [vecsub $smdpos $fixedpos]
```

This gives you three numbers that are the x , y , and z - components of the *normalized* direction between the fixed and the SMD atom! Keep these n_x , n_y and n_z saved for the next section.

$$n_x = \quad n_y = \quad n_z =$$

In the provided example (look at Figs. 18 and 19), the result is:

$$(38.843, 39.309, 33.494) - (26.241, 24.928, 3.279) = (12.602, 14.381, 30.215)$$

$$\sqrt{12.602^2 + 14.381^2 + 30.215^2} = 35.757$$

$$n_x = \frac{12.602}{35.757} = 0.352 \quad n_y = \frac{14.381}{35.757} = 0.402 \quad n_z = \frac{30.215}{35.757} = 0.845$$

- 16** Delete the current molecule by choosing the Molecule → Delete Molecule menu item and keep VMD opened.

3.2.2 Configuration File

Now you have one of the files required for the intended SMD simulation, namely `common/ubq_ww_eq.ref`. The next step is to create the NAMD configuration file or modify the provided template. Exercise care at this stage and check for misspelling of names or commands.

- 1** Be sure that the current directory in the Terminal window is `namd-tutorial-files`.
- 2** Copy the file `common/sample.conf` to the directory `3-1-pullcv` and rename it by typing `cp common/sample.conf 3-1-pullcv/ubq_ww_pcv.conf`.
- 3** Open the configuration file using `nedit` by typing `nedit 3-1-pullcv/ubq_ww_pcv.conf`.
- 4** As a job description you may write


```
# N- C- Termini Constant Velocity Pulling
```

 Note that this is just a comment line.
- 5** In the Adjustable Parameters section you need to change:


```
structure mypsf.psf → structure ../common/ubq.psf
coordinates mypdb.pdb → coordinates ../common/ubq_ww_eq.pdb
outputName myoutput → outputName ubq_ww_pcv
```

In this way you are using the equilibrated protein without water in your upcoming simulation. The output files of your simulation will have the prefix `ubq_ww_pcv` in their names.

- 6** In the Input section change:


```
parameters par_all27_prot_lipid.inp
→ parameters ../common/par_all27_prot_lipid.inp
```

There is no need to modify the Periodic Boundary Conditions, Force Field Parameters, Integrator Parameters or PME sections (The latter is disabled since you are not using periodic boundary conditions).

- 7 The temperature control should be disabled in order to disturb the movement of the atoms as little as possible. Switch off the Constant Temperature Control by changing:

```
langevin on → langevin off
```

- 8 Again, there is no need to modify Constant Pressure Control and IMD Settings since they will not be used. However, you have to enable the Fixed Atoms Constraint by changing the following lines:

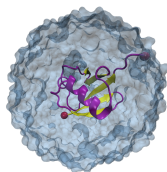
```
if {0} { → if {1} {
fixedAtomsFile myfixedatoms.pdb → fixedAtomsFile
                                  ../common/ubq_ww_eq.ref
```

NAMD will keep fixed the atoms which have a B value of 1 in the file `ubq_ww_eq.ref`.

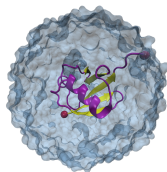
- 9 In the Extra Parameters section add the following lines:

```
SMD      on
SMDFile  ../common/ubq_ww_eq.ref
SMDk     7
SMDVel   0.005
```

With these configuration file modifications, NAMD will pull atoms which have occupancy 1 in the file `ubq_ww_eq.ref`. The virtual spring between the dummy atom and the SMD atom will have a spring constant of 7 kcal/mol/Å², where 1 kcal/mol = 69.479 pN Å. The pulling will be performed at a constant velocity of 0.005 Å/timestep, equivalent to 2.5 Å/ps in the present case where the time step is 2 femtoseconds.



How to choose the spring constant. The setup of the simulation should be as close as possible to AFM experiments. The spring constant must be high enough that the local unbinding potential is sampled, but must not be too high or the measured force will be dominated by noise.



Pulling Velocity. The velocity of pulling is determined basically by the following issues: how close you want to be to experiment, what the total pulling distance is, and how much computer power you have available. Therefore, you should choose the smallest velocity that allows you to perform long enough simulations to see the unfolding pathway.

- 10 In the Extra Parameters section you need to write also the direction of pulling by adding the following line:

```
SMDDir   $n_x$   $n_y$   $n_z$ 
```

Where n_x , n_y and n_z should be replaced by the coordinates you calculated at the end of section 3.2.1. (In our example, the direction is $n_x = 0.352$, $n_y = 0.402$, $n_z = 0.845$.)

- 11** In the same section, set the frequency in time steps with which the current SMD data values will be printed out by typing:

```
SMDOutputFreq 10
```

- 12** Finally, in the Execution Script section of your configuration file be sure that the minimization is disabled and change the number of time steps of your simulation by replacing:

```
run 50000 → run 20000
```

This is equivalent to 40 ps (and the simulation should not take more than 20 minutes).

- 13** Now your configuration file is ready. SAVE IT and close your text editor.



Actual Simulations. As pointed out before, parameters of these simulations are selected so you can run a short SMD simulation. Actual scientific simulations are run for several nanoseconds using pulling velocities of the order of 0.1 Å/ps or smaller in systems that include water molecules (more than 10000 atoms).

3.2.3 Running the First SMD Simulation

All the files you need to launch your simulation are now ready. You should have a file called `ubq_ww_pcv.conf` in the `3-1-pullcv` directory and files:

- `ubq.psf`
- `ubq_ww_eq.pdb`
- `ubq_ww_eq.ref`
- `par_all127_prot_lipid.inp`

in the `common` directory. In case that you have not generated these files you can use prepared files available in the directories `3-1-pullcf/example-output` and `common/example-output`.

- 1 Check that you actually have these files in the respective directories and change to directory `3-1-pullcv` to run the simulation.



Running. Run your simulation by typing in a Terminal Window:

```
namd2 ubq_ww_pcv.conf > ubq_ww_pcv.log &
```

Be sure you are in the `3-1-pullcv` directory.

While your simulation is running, some files will be created (as you already learned in Unit 1). The only difference in this case is that in the output file (`ubq_wv_pcv.log`) you will find specific information about the SMD atom and the applied force.

- The additional output line starts with the word SMD in the first column as shown in Fig. 20 (a).
- The second column (b) is the number of timesteps.
- The third, fourth, and fifth columns (c) are the coordinates of the SMD atom.
- The last three columns (d) are the components of the current force applied to the SMD atom in pN.

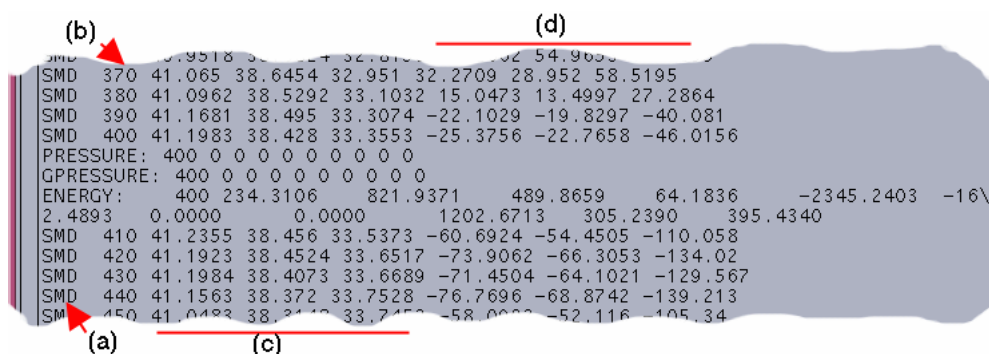



Figure 20: Typical output of a SMD simulation

Since the simulation will take some time, the analysis of the complete output will be explained in section 3.4. Thus, while you wait for the result you can set up your Constant Force simulation.



Restarting an SMD simulation. The position of the dummy atom depends on the velocity of the pulling and the current time. Therefore, if you want to restart an SMD simulation, make sure that you set the `firsttimestep` parameter as the time step of the saved previous configuration.

3.3 Constant Force Pulling

Now, you will carry out an SMD simulation that applies a constant force. In this case, the C_{α} atom of the first residue is again kept fixed, but the SMD atom C_{α} of the last residue now experiences a constant force in the direction defined by the vector that links both atoms, the fixed and the pulled one. Note that in this case there is no dummy atom or virtual spring.

3.3.1 The SMD Atom

Again, NAMD uses a column of a pdb file to determine which atoms will be fixed and which atoms will be pulled. In addition, another three columns are used to specify the direction of the constant force that will be applied to the SMD atom. Your first task is to build this file.

- 1 Navigate back to the `namd-tutorial-files/` directory by typing in a Terminal window `cd ..`
- 2 In your opened session of VMD, choose the File → New Molecule... menu item and using the Browse... and the Load buttons load the file `common/ubq.psf` located in the `common` directory, and close the Molecule File Browser window.
- 3 Using the mouse select the molecule in the VMD Main window and then choose the Load Data Into Molecule... menu item. Again, using the Browse... and the Load buttons load the file `ubq_ww_eq.pdb` located in the `common` directory. Close the Molecule File Browser.

- 4 As you did in the previous section, define your fixed atom by typing the following commands in the VMD TkCon window:

```
set allatoms [atomselect top all]
$allatoms set beta 0
set fixedatom [atomselect top "resid 1 and name CA"]
$fixedatom set beta 1
$allatoms set occupancy 0
```

- 5 The occupancy of the SMD atom will contain the force applied to it. Type

```
set smdatom [atomselect top "resid 76 and name CA"]
$smdatom set occupancy 11.54
```

You have now set the force to 11.54 kcal/mol/Å by entering the value into the occupancy field. It is equivalent to 800 pN.

- 6 The direction of the force will be specified in the coordinates of the SMD atom. Therefore, you have to write the normal vector in the following way:

```
$smdatom set x  $n_x$ 
$smdatom set y  $n_y$ 
$smdatom set z  $n_z$ 
```

where n_x , n_y , and n_z have to be replaced by the appropriate values you already calculated above (in our example 0.352, 0.402, and 0.845). Since the VMD OpenGL Display interprets the numbers just entered as coordinates of the SMD atom, it displays now an inaccurate protein structure. This is OK and we apologize for the poor appearance.

- 7 Now, save the coordinates into a file by typing `$allatoms writepdb common/ubq_ww_eq2.ref`
- 8 Delete the current molecule by choosing the `Molecule → Delete Molecule` menu item and keep VMD opened.

3.3.2 Configuration File

As you did before, in the next step you will modify the configuration file in order to set up your constant force simulation.

- 1 Open a new Terminal window, and change the directory to `namd-tutorial-files/`.
- 2 Copy the file `common/sample.conf` to the directory `3-2-pullcf` and rename it by typing `cp common/sample.conf 3-2-pullcf/ubq_ww_pcf.conf`.
- 3 Now, open the configuration file by typing `edit 3-2-pullcf/ubq_ww_pcf.conf`.
- 4 As a job description you can write `# N-C-Termini Constant Force Pulling`
- 5 In the Adjustable Parameters section you need to change:


```
structure mypsf.psf      → structure ../common/ubq.psf
coordinates mypdb.pdb   → coordinates ../common/ubq_ww_eq.pdb
outputName myoutput    → outputName ubq_ww_pcf
```

In this way you are using the equilibrated protein without water in your simulation. The output files of your simulation will have the prefix `ubq_ww_pcf` in their names.

- 6 In the Input section change:


```
parameters par_all27_prot_lipid.inp
→ parameters ../common/par_all27_prot_lipid.inp
```
- 7 As before, switch off the Constant Temperature Control by changing:


```
langevin on  → langevin off
```
- 8 Enable the Fixed Atoms Constraint by changing the following lines


```
if {0} {          → if {1} {
fixedAtomsFile myfixedatoms.pdb → fixedAtomsFile
                                   ../common/ubq_ww_eq2.ref
```

NAMD will keep fixed the atoms which have a B value of 1 in the file `../common/ubq_ww_eq2.ref`.
- 9 In the Extra Parameters section add the following lines:


```
constantforce yes
consorcefile ../common/ubq_ww_eq2.ref
```

NAMD will apply a constant force to the atoms that have occupancy different from 0. The force is calculated from the file as $(x, y, z) \times O$, where O is the value of the occupancy column.

- 10 Finally, in the Execution Script section of your configuration file be sure that the minimization is disabled and change the number of time steps your simulation will run by replacing:

```
run 50000 → run 20000
```

This is equivalent to 40 ps.

- 11 Your second configuration file is done. **SAVE IT** and close the text editor.

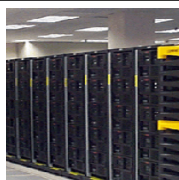
3.3.3 Running the Second SMD Simulation

Now, all the files you need to launch your second simulation are ready. You should have a file called `ubq_ww_pcf.conf` in the `3-2-pullcf` directory and files:

- `ubq.psf`
- `ubq_ww_eq.pdb`
- `ubq_ww_eq2.ref`
- `par_all27_prot_lipid.inp`

in the `common` directory. In case that you have not generated these files you can use prepared files available at directories `3-2-pullcf/example-output` and `common/example-output`.

- 1 In a Terminal window, change to directory `3-2-pullcf/` to run the simulation.



Running. Run your simulation by typing in a Terminal Window:

```
namd2 ubq_ww_pcf.conf > ubq_ww_pcf.log &
```

Be sure you are in the `3-2-pullcf` directory.

Note that the output file has no extra information in this case, since the applied force is now constant.

3.4 Analysis of Results

3.4.1 Force Analysis for Constant Velocity Pulling

Hopefully your constant velocity SMD simulation has finished successfully and you can proceed with analyzing the generated data, specifically the trajectory and the force applied to the SMD atom. In case you have not succeeded with your simulations we provide the respective files in the subdirectories `example-output`. For instance, if you do not find a file in the directory `common`, you should find it in the directory `common/example-output`.

- 1 In VMD choose the **New Molecule...** menu item. Using the **Browse...** and the **Load** buttons, load the file `ubq.psf` in the `common` directory.
- 2 In the **Molecule File Browser** window, use the **Browse...** and the **Load** buttons load the trajectory file `3-1-pullcv/ubq_ww_pcv.dcd`. Close the **Molecule File Browser**.

In the screen you should be able to see the trajectory of the molecular dynamics simulation. By choosing an appropriate representation (e.g. **New Cartoon**) look how the β strands behave along the trajectory and how one end of the protein remains fixed while the other one is pulled as you had set it up (Fig. 21). Note that secondary structure will be calculated for the **New Cartoon** representation based on the frame of the trajectory you are viewing. If you move to another trajectory frame and would like to view the protein's secondary structure in *that* frame, type `mol ssrecalc top` in the **TkCon** window and VMD will update it.

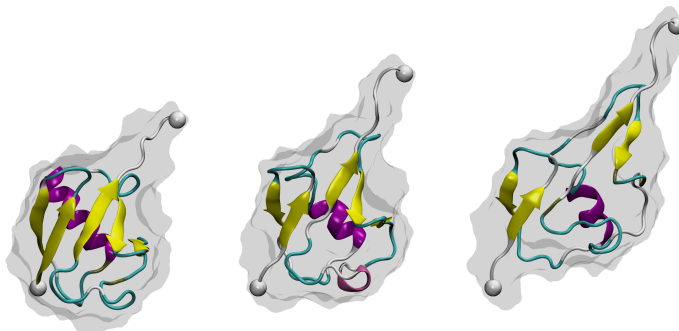


Figure 21: Snapshots of ubiquitin pulling with constant velocity at three different time steps.

After inspecting your trajectory you should extract the force applied to the SMD atom from the NAMD output file:

- 3 In the VMD **TkCon** window, set your current directory to `3-1-pullcv` by typing: `cd 3-1-pullcv`
- 4 In directory `3-1-pullcv`, create the subdirectory called `analysis` by typing: `mkdir analysis`

You will now use a script designed to extract the necessary information from the NAMD log file and calculate the force of pulling. The NAMD log file provides SMD information on lines beginning with the tag "SMD": the current timestep, current position of the center of mass of the restrained atoms, and the current force applied to the center of mass (in piconewtons).

- 5 Source the provided tcl script for getting force information from the NAMD log file. Type the following command in the VMD TkCon window:

```
source ft.tcl
```

In order to obtain the force in the direction of pulling you need to calculate $\vec{f} \cdot \vec{n}$, where \vec{n} is the normalized direction of pulling (in our example it was 0.443, 0.398, 0.803). The script will ask you for these values. Simply enter them as `n_x`, `n_y`, and `n_z`. The script will create a file `ft.dat` (in the `analysis` directory) which contains just the simulation timestep and the magnitude of the force on the dummy atom at that time.

- 6 The contents of the script are shown below. You should understand what each line does in order to make tcl scripting a part of your repertoire.

```
### Open the log file for reading and the output .dat file for writing
set file [open ubq_ww_pcv.log r]
set output [open analysis/ft.dat w]

### Gather input from user.
puts "Enter a value for n_x:"
set nx [gets stdin]
puts "Enter a value for n_y:"
set ny [gets stdin]
puts "Enter a value for n_z:"
set nz [gets stdin]

### Loop over all lines of the log file
set file [open ubq_ww_pcv.log r]
while { [gets $file line] != -1 } {

### Determine if a line contains SMD output. If so, write the
### timestep followed by f(dot)n to the output file
  if {[lindex $line 0] == "SMD"} {
    puts $output "[lindex $line 1] [expr $nx*[lindex $line 5]
+ $ny*[lindex $line 6] + $nz*[lindex $line 7]]"
  }
}

### Close the log file and the output .dat file
close $file
close $output
```

- 7 Type `xmgrace analysis/ft.dat`. A plot of force versus time should appear on your screen (Fig. 22).

- 8 In VMD, look again at the trajectory at different times and try to identify the events that are related to peaks in the force. When you are done close `xmgrace`.

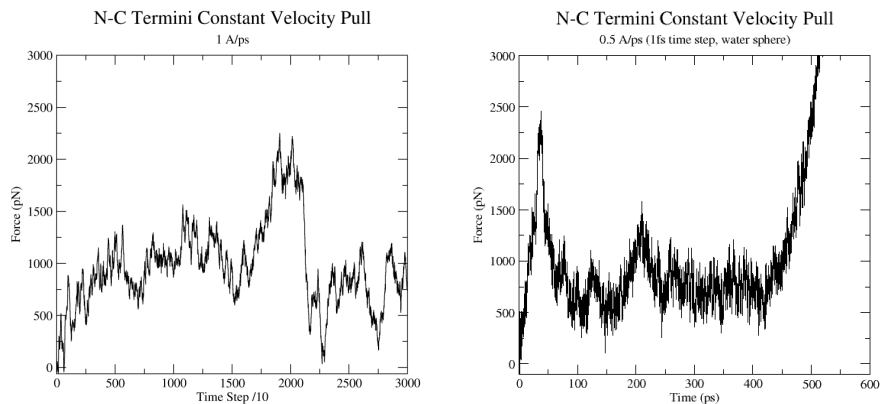
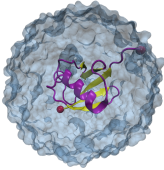


Figure 22: Force vs Time. Your plot should resemble the graph on the left. The graph on the right was obtained in a simulation where ubiquitin was placed in a water sphere (~ 26000 atoms) and pulled at 0.5 \AA/ps using a time step of 1 femtosecond. The results of this last simulation are in better agreement with actual AFM experiments. The force at the end ($t > 400\text{ps}$) increases when the protein becomes completely unfolded. The first peak in the force is associated with the breaking of hydrogen bonds between two β strands.



What can we learn from this graph. Intermediates states in the unfolding pathway of the protein can be identified using this kind of simulation. A particular useful way to see this is by plotting force vs extension. In addition, microscopic details missed by experiments, like the behaviour of hydrogen bonds and the role of water in the unfolding pathway, can be studied and explored along with the micro-mechanical and elastic properties of the protein.

3.4.2 Distance Analysis for Constant Force Pulling

- 1 In VMD, delete the current molecule by choosing the Molecule \rightarrow Delete Molecule menu item.
- 2 Choose the New Molecule... menu item. Using the Browse... and the Load buttons load the file `ubq.psf` located in the `common` directory.
- 3 In the Molecule File Browser window, use the Browse... and the Load buttons load the trajectory file `3-2-pullcf/ubq_wv_pcf.dcd`. As mentioned before, in case that you have not accomplished the simulation to generate the file, we provide such file at `3-2-pullcf/example-output/ubq_wv_pcf.dcd`.

In the OpenGL Display window you will see the trajectory of the constant force pulling simulation.

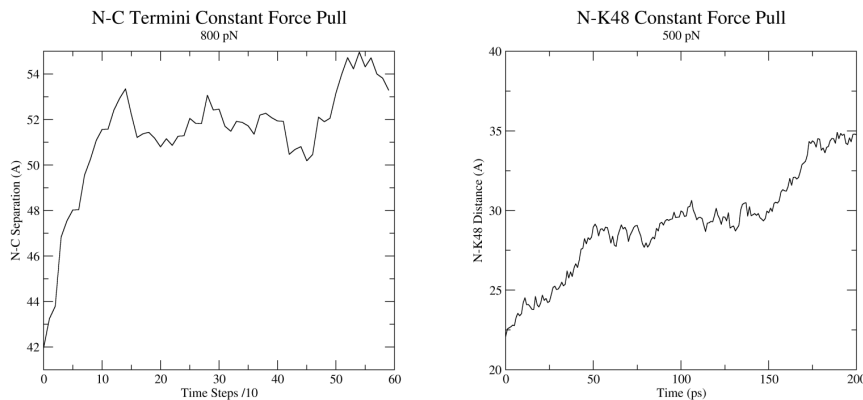
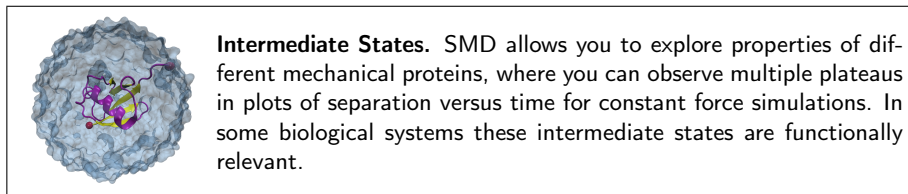


Figure 23: Distance vs Time Steps. Your plot should resemble the graph on the left. The graph on the right was obtained in a simulation where ubiquitin was placed in a water box and pulled from the C-Terminus while keeping the residue K48 fixed. In this case we can observe an intermediate state.

- 4 Once the complete trajectory is loaded, use the slider in the VMD Main window to go back to the first frame.
- 5 Choose the Graphics → Representations... menu item. In the Graphical Representations window choose the New Cartoon drawing method.
- 6 Press the Create Rep button in order to create a new representation. In the Selected Atoms text entry delete the word **all** and type **protein and resid 1 76** and name **CA**.
- 7 For this representation choose the VDW drawing method. You should be able to see the two C_{α} atoms at the end of your protein as spheres.
- 8 Hide the first representation by double clicking on it in the Graphical Representations window.
- 9 Click in the OpenGL Display window and press the key 2 (Shortcut to bond labels). Your cursor should look like a cross. Pick the two spheres displayed. A line linking both atoms should appear with the distance between them displayed.
- 10 Choose the Graphics → Labels... menu item. In the Labels window, choose the label type Bonds. Select the bond displayed, click on the Graph tab and then click on the Graph button. This will create a plot of the distance between these two atoms over time (Fig. 23). You also have the option to write the data and to a file, which can then be read by an external graphing program.



This is the end of the NAMD tutorial. We hope you can now make use of VMD and NAMD in your work.

4 Acknowledgments

The development of NAMD and the tutorials are funded by the National Institutes of Health (NIH 9P41GM104601 — Center for Macromolecular Modeling and Bioinformatics, NIH 5 R01 GM908243-02 — “Commodity Hardware Acceleration of Popular Modeling Software for Structural Biology”). Proper citation is a primary way in which we demonstrate the value of our software to the scientific community and is essential to continued NIH funding for NAMD. The authors request that all published work which utilizes NAMD include the primary NAMD citation:

Scalable molecular dynamics with NAMD. James C. Phillips, Rosemary Braun, Wei Wang, James Gumbart, Emad Tajkhorshid, Elizabeth Villa, Christophe Chipot, Robert D. Skeel, Laxmikant Kale, and Klaus Schulten. *Journal of Computational Chemistry*, **26**:1781-1802, 2005.

A PDB Files

The term PDB can refer to the Protein Data Bank (<http://www.rcsb.org/pdb/>), to a data file provided there, or to any file following the PDB format. Files in the PDB include information such as the name of the compound, the species and tissue from which it was obtained, authorship, revision history, journal citation, references, amino acid sequence, stoichiometry, secondary structure locations, crystal lattice and symmetry group, and finally the ATOM and HET-ATOM records containing the coordinates of the protein and any waters, ions, or other heterogeneous atoms in the crystal. Some PDB files include multiple sets of coordinates for some or all atoms. Due to the limits of x-ray crystallography and NMR structure analysis, the coordinates of hydrogen atoms are not included in the PDB.

NAMD and VMD ignore everything in a PDB file except for the ATOM and HETATOM records, and when writing PDB files the ATOM record type is used for all atoms in the system, including solvent and ions. Here are the ATOM records for the first two residues of ubiquitin from the 1UBQ entry in the PDB:

ATOM	1	N	MET	1	27.340	24.430	2.614	1.00	9.67	1UBQ	71
ATOM	2	CA	MET	1	26.266	25.413	2.842	1.00	10.38	1UBQ	72
ATOM	3	C	MET	1	26.913	26.639	3.531	1.00	9.62	1UBQ	73
ATOM	4	O	MET	1	27.886	26.463	4.263	1.00	9.62	1UBQ	74
ATOM	5	CB	MET	1	25.112	24.880	3.649	1.00	13.77	1UBQ	75
ATOM	6	CG	MET	1	25.353	24.860	5.134	1.00	16.29	1UBQ	76
ATOM	7	SD	MET	1	23.930	23.959	5.904	1.00	17.17	1UBQ	77
ATOM	8	CE	MET	1	24.447	23.984	7.620	1.00	16.11	1UBQ	78
ATOM	9	N	GLN	2	26.335	27.770	3.258	1.00	9.27	1UBQ	79
ATOM	10	CA	GLN	2	26.850	29.021	3.898	1.00	9.07	1UBQ	80
ATOM	11	C	GLN	2	26.100	29.253	5.202	1.00	8.72	1UBQ	81
ATOM	12	O	GLN	2	24.865	29.024	5.330	1.00	8.22	1UBQ	82
ATOM	13	CB	GLN	2	26.733	30.148	2.905	1.00	14.46	1UBQ	83
ATOM	14	CG	GLN	2	26.882	31.546	3.409	1.00	17.01	1UBQ	84
ATOM	15	CD	GLN	2	26.786	32.562	2.270	1.00	20.10	1UBQ	85
ATOM	16	OE1	GLN	2	27.783	33.160	1.870	1.00	21.89	1UBQ	86
ATOM	17	NE2	GLN	2	25.562	32.733	1.806	1.00	19.49	1UBQ	87

The fields seen here in order from left to right are the record type, atom ID, atom name, residue name, residue ID, x, y, and z coordinates, occupancy, temperature factor (called beta), segment name, and line number.

If this file is loaded into VMD and then written out as a new file, most of the extra information will be removed, the HETATOM records will become ATOM records, and the previously empty chain ID field (between residue name and residue ID) will be set to X (unless present in the original file), and the line number will be omitted, as seen here:

ATOM	1	N	MET X	1	27.340	24.430	2.614	1.00	9.67	1UBQ	
ATOM	2	CA	MET X	1	26.266	25.413	2.842	1.00	10.38	1UBQ	
ATOM	3	C	MET X	1	26.913	26.639	3.531	1.00	9.62	1UBQ	

B PSF Files

A PSF file, also called a protein structure file, contains all of the molecule-specific information needed to apply a particular force field to a molecular system. The CHARMM force field is divided into a topology file, which is needed to generate the PSF file, and a parameter file, which supplies specific numerical values for the generic CHARMM potential function. The topology file defines the atom types used in the force field; the atom names, types, bonds, and partial charges of each residue type; and any patches necessary to link or otherwise mutate these basic residues. The parameter file provides a mapping between bonded and nonbonded interactions involving the various combinations of atom types found in the topology file and specific spring constants and similar parameters for all of the bond, angle, dihedral, improper, and van der Waals terms in the CHARMM potential function.

The PSF file contains six main sections of interest: atoms, bonds, angles, dipoles, impropers (dihedral force terms used to maintain planarity), and cross-terms. The following is taken from a PSF file for ubiquitin. First is the title and atom records:

PSF CMAP

```

6 !NTITLE
REMARKS original generated structure x-plor psf file
REMARKS 2 patches were applied to the molecule.
REMARKS topology top_all127_prot_lipid.inp
REMARKS segment U { first NTER; last CTER; auto angles dipoles }
REMARKS defaultpatch NTER U:1
REMARKS defaultpatch CTER U:76

```

```

1231 !NATOM
  1 U   1   MET  N   NH3   -0.300000    14.0070    0
  2 U   1   MET  HT1  HC    0.330000     1.0080    0
  3 U   1   MET  HT2  HC    0.330000     1.0080    0
  4 U   1   MET  HT3  HC    0.330000     1.0080    0
  5 U   1   MET  CA   CT1   0.210000    12.0110    0
  6 U   1   MET  HA   HB    0.100000     1.0080    0
  7 U   1   MET  CB   CT2  -0.180000    12.0110    0

```

The fields in the atom section are atom ID, segment name, residue ID, residue name, atom name, atom type, charge, mass, and an unused 0. PSF files may be in either CHARMM or X-PLOR format, with the CHARMM format using an integer rather than a name for the atom type. NAMD requires the X-PLOR format, which is also more flexible since it is not tied to the specific order of atom types in a single parameter file. NAMD and VMD require that the order of atoms in any PDB, DCD, or other atomic data file exactly matches the order found in the PSF file.

Notice that hydrogen atoms are included, that multiple atoms in a residue may share the same type (e.g., HT1, HT2, and HT3 are of type HC), and that

atoms of the same element may have different types (e.g., CA and CB, HA, and HT1). Much of the information in the PDB is also included in the PSF file. Often, the only information from the PDB file used by NAMD is the atomic coordinates. In some cases the contents of the occupancy and beta fields of the PDB file are used as parameters to optional simulation methods.

The covalent bond section lists four pairs of atoms per line:

```
1237 !NBOND: bonds
  1      5      2      1      3      1      4      1
  5      6      7      5      7      8      7      9
 10      7      10     11     10     12     13     10
```

The angle section lists three triples of atoms per line:

```
2257 !NTHETA: angles
  1      5      6      1      5      18     2      1      5
  2      1      4      2      1      3      3      1      5
  3      1      4      4      1      5      5      18     19
```

The dihedral and improper sections list two quadruples of atoms per line:

```
3293 !NPHI: dihedrals
  1      5      7      10     1      5      7      8
  1      5      7      9      1      5      18     20
  1      5      18     19     2      1      5      7

204 !NIMPHI: impropers
 18      5      20     19     20     18     22     21
 30     32     27     31     30     27     32     31
 32     30     33     34     32     30     34     33
```

The cross-term sections list two quadruples of atoms per line:

```
74 !NCRTERM: cross-terms
 18     20     22     35     20     22     35     37
 35     37     39     54     37     39     54     56
 54     56     58     74     56     58     74     76
```

The order of the atoms within each bond is not significant. The order of atoms within angles, dihedrals, and impropers is significant, but the order can be reversed without affecting the resulting potential. In no case is the relative order of different bonds etc. significant. Since every bond and improper is explicitly listed in the topology file, the atom order within these terms tend to match the original order given. Angles and dihedrals are typically generated automatically and therefore appear in a sorted order.

There is a difference between X-PLOR formatted CHARMM PSF files, which VMD generates with the psfgen module and NAMD uses in conjunction with CHARMM parameter files, and PSF files generated by X-PLOR, which NAMD uses in conjunction with X-PLOR parameter files. Dihedral terms sometimes require multiple sinusoids to represent a torsional potential and therefore

multiple parameter sets appear in the parameter file. In PSF files generated by X-PLOR multiple dihedrals would be indicated by duplicate dihedrals in the PSF file. When using CHARMM PSF and parameter files NAMD extracts any multiple dihedral terms directly from the parameter file and each dihedral appears only once in the PSF file.


```
!Evanseck, J.D.; Field, M.J.; Fischer, S.; Gao, J.; Guo, H.; Ha, S.;
!Joseph-McCarthy, D.; Kuchnir, L.; Kuczera, K.; Lau, F.T.K.; Mattos,
!C.; Michnick, S.; Ngo, T.; Nguyen, D.T.; Prodhom, B.; Reiher, III,
!W.E.; Roux, B.; Schlenkrich, M.; Smith, J.C.; Stote, R.; Straub, J.;
!Watanabe, M.; Wiorkiewicz-Kuczera, J.; Yin, D.; Karplus, M. All-atom
!empirical potential for molecular modeling and dynamics Studies of
!proteins. Journal of Physical Chemistry B, 1998, 102, 3586-3616.
!
```

The topology file must define the type, mass, and charge of every atom in every residue, so that a PSF file can be constructed. While the partial charges assigned to atoms of the same type vary between residues, their masses do not. Therefore, the mass of every atom type is declared once at the beginning of the file in a MASS statement. This statement also pairs an integer with each type name, which is used in CHARMM formatted PSF files, but *not* in the X-PLOR formatted PSF files used by NAMD. The type indices are unique but not necessarily consecutive. Notice in the following except that there are many types of hydrogen and carbon atoms defined, but the atomic masses are the same:

```
MASS 1 H 1.00800 H ! polar H
MASS 2 HC 1.00800 H ! N-ter H
MASS 3 HA 1.00800 H ! nonpolar H
MASS 4 HT 1.00800 H ! TIPS3P WATER HYDROGEN
MASS 5 HP 1.00800 H ! aromatic H
MASS 6 HB 1.00800 H ! backbone H
MASS 7 HR1 1.00800 H ! his he1, (+) his HG,HD2
MASS 8 HR2 1.00800 H ! (+) his HE1
MASS 9 HR3 1.00800 H ! neutral his HG, HD2
MASS 10 HS 1.00800 H ! thiol hydrogen
MASS 11 HE1 1.00800 H ! for alkene; RHC=CR
MASS 12 HE2 1.00800 H ! for alkene; H2C=CR
MASS 13 HA1 1.00800 H ! alkane, CH, new LJ params (see toppar_all22_prot_aliphatic_c27.str)
MASS 14 HA2 1.00800 H ! alkane, CH2, new LJ params (see toppar_all22_prot_aliphatic_c27.str)
MASS 15 HA3 1.00800 H ! alkane, CH3, new LJ params (see toppar_all22_prot_aliphatic_c27.str)
MASS 16 HF1 1.00800 H ! Aliphatic H on fluorinated C (see toppar_all22_prot_fluoro_alkanes.str)
MASS 17 HF2 1.00800 H ! Aliphatic H on fluorinated C (see toppar_all22_prot_fluoro_alkanes.str)
MASS 20 C 12.01100 C ! carbonyl C, peptide backbone
MASS 21 CA 12.01100 C ! aromatic C
MASS 22 CT1 12.01100 C ! aliphatic sp3 C for CH
MASS 23 CT2 12.01100 C ! aliphatic sp3 C for CH2
MASS 24 CT3 12.01100 C ! aliphatic sp3 C for CH3
```

When specifying the connectivity of a chain of residues in a protein, it is necessary to refer to atoms in the previous or succeeding residue. The CHARMM topology file declares those atom types that will be referenced in adjoining residues as such:

```
DECL -CA
```

```
DECL -C
DECL -O
DECL +N
DECL +HN
DECL +CA
```

The first and last residues of a chain obviously have different connectivity from those in the center, since they have one fewer neighbor. This is handled by applying *patch residues*, normally referred to as *patches*, to the terminal residues. As will be seen, any residue definition can specify the patch to be applied when it is the first or last residue in a segment. However, a default set is declared for the entire file, as in the following where the default patch is NTER for the first residue of a segment and CTER for the last:

```
DEFA FIRS NTER LAST CTER
```

While the covalent bond connectivity between atoms must necessarily be provided by the topology file, enumerating all of the required angles and dihedrals would be tedious and error-prone, as well as enormously complicated since every combination of residues joined by a peptide bond would require a different set. Therefore, angles and dihedrals are automatically generated for every pair or triple of connected bonds when a segment is built. This autogeneration may be enabled or disabled on a per-segment basis as it should never be used on segments of water, but the default is defined in the topology file:

```
AUTO ANGLES DIHE
```

We are now ready for the actual residue definitions, beginning with alanine, as shown below. A residue is indicated by the RESI statement with the residue name (ALA) and total charge (0.00). Next are listed all of the atoms in the residue in ATOM statements with the atom name (N, HN, CA), type (NH1, H, CT1), and partial charge (-0.47, 0.31, 0.07). The GROUP statements, dividing the atoms into integer-charge groups, are not used by NAMD and should not be confused with the *hydrogen groups*, each a non-hydrogen atom and all hydrogens bonded to it, that NAMD uses to accelerate distance-testing for nonbonded calculations.

```
RESI ALA          0.00
GROUP
ATOM N    NH1    -0.47 !    |
ATOM HN   H      0.31 !    HN-N
ATOM CA   CT1    0.07 !    |    HB1
ATOM HA   HB     0.09 !    |    /
GROUP          !    HA-CA--CB-HB2
ATOM CB   CT3   -0.27 !    |    \
ATOM HB1  HA     0.09 !    |    HB3
ATOM HB2  HA     0.09 !    O=C
ATOM HB3  HA     0.09 !    |
GROUP          !
```

```

ATOM C   C       0.51
ATOM O   O       -0.51

```

The ALA residue continues by defining connectivity, with each BOND statement followed by a list of pairs of atoms to be connected with bonds. The DOUBLE statement is a synonym for BOND and does not affect the resulting PSF file. Observe that the atom C is bonded to +N, the N of the following residue. A bond between N and -C will be provided by the preceding residue. The order of bonds, or of the atoms within a bond, is not significant.

```

BOND CB CA N HN N CA
BOND C CA C +N CA HA CB HB1 CB HB2 CB HB3
DOUBLE O C

```

As noted above, the angle and dihedral terms will be autogenerated and are therefore not listed for this residue. The less common improper dihedrals (normally just called improvers), however, must be listed explicitly. In this case there are two improvers, which maintain the planarity of the peptide bonds. As with dihedrals, the order of atoms within an improper may be reversed. As shown below, improvers are specified by the IMPR statement followed by sets of four atoms, with the central atom to which the other three are bonded typically listed first.

```

IMPR N -C CA HN C CA +N O

```

The CMAP correction terms should also be listed explicitly since they are only applied to the backbone dihedrals, indicated following the CMAP statement.

```

CMAP -C N CA C N CA C +N

```

Explicit hydrogen bond terms are no longer present in the CHARMM force field and are therefore not calculated by NAMD. The DONOR and ACCEPTOR statements, shown below, specify pairs of atoms eligible to form hydrogen bonds. The psfgen module in VMD ignores these statements and does not incorporate hydrogen bonding information into the PSF file.

```

DONOR HN N
ACCEPTOR O C

```

Finally in the residue definition are the internal coordinate IC statements. For each set of four atoms 1 2 3 4, the IC specifies in order the bond length 1-2, the angle 1-2-3, the dihedral 1-2-3-4, the angle 2-3-4, and the bond length 3-4. With this set of data, the position of atom 1 may be determined based on the positions of atoms 2-4, and the position of atom 4 may be determined from the positions of atoms 1-3, allowing the recursive generation of coordinates for all atoms in the structure based on a three-atom seed. Improper IC statements are indicated by a * preceding the third atom, the atom to which the other three are bonded, as in 1 2 *3 4. The order of atoms in an IC statement is different from that of an IMPR statement, and values provide the length 1-3, the angle 1-3-2, the dihedral 1-2-3-4, the angle 2-3-4, and the length 3-4.


```

! 2 refers to next (C terminal)
! use in a patch statement
! follow with AUTOgenerate ANGLEs DIHEdrals command

BOND 1C 2N
!the need for the explicit specification of angles and dihedrals in
!patches linking images has not been tested
!ANGLE 1C 2N 2CA 1CA 1C 2N
!ANGLE 10 1C 2N 1C 2N 2HN
!DIHE 1C 2N 2CA 2C 1C 2N 2CA 2HA 1C 2N 2CA 2CB
!DIHE 1HA 1CA 1C 2N 1N 1CA 1C 2N 1CB 1CA 1C 2N
!DIHE 1CA 1C 2N 2HN 1CA 1C 2N 2CA
!DIHE 10 1C 2N 2HN 10 1C 2N 2CA
IMPR 2N 1C 2CA 2HN 1C 1CA 2N 10
IC 1N 1CA 1C 2N 0.0000 0.0000 180.0000 0.0000 0.0000
IC 2N 1CA *1C 10 0.0000 0.0000 180.0000 0.0000 0.0000
IC 1CA 1C 2N 2CA 0.0000 0.0000 180.0000 0.0000 0.0000
IC 1C 2N 2CA 2C 0.0000 0.0000 180.0000 0.0000 0.0000
IC 1C 2CA *2N 2HN 0.0000 0.0000 180.0000 0.0000 0.0000

```

These types of patches are used to alter protonation states (ASPP, GLUP, HES2), create disulphide bonds (DISU), attach HEME groups (PHEM) and their ligands (PLO2, PLIG), and even remove unwanted autogenerated angles (FHEM).

The following is the complete residue definition for GLY, the smallest of the amino acids. Compare GLY to the ALA residue dissected above.

```

RESI GLY          0.00
GROUP
ATOM N   NH1     -0.47 !   |
ATOM HN  H       0.31 !   N-H
ATOM CA  CT2     -0.02 !   |
ATOM HA1 HB      0.09 !   |
ATOM HA2 HB      0.09 ! HA1-CA-HA2
GROUP          !   |
ATOM C    C       0.51 !   |
ATOM O    O      -0.51 !   C=O
              !   |

BOND N HN  N  CA  C CA
BOND C +N  CA HA1 CA HA2
DOUBLE O  C
IMPR N -C  CA HN  C CA  +N O
CMAP -C N  CA  C  N  CA  C  +N
DONOR HN N
ACCEPTOR O C
IC -C  CA  *N  HN  1.3475 122.8200 180.0000 115.6200 0.9992
IC -C  N   CA  C   1.3475 122.8200 180.0000 108.9400 1.4971
IC N   CA  C   +N  1.4553 108.9400 180.0000 117.6000 1.3479
IC +N  CA  *C  O   1.3479 117.6000 180.0000 120.8500 1.2289
IC CA  C   +N  +CA 1.4971 117.6000 180.0000 124.0800 1.4560
IC N   C   *CA HA1 1.4553 108.9400 117.8600 108.0300 1.0814

```

```
IC N    C    *CA HA2    1.4553 108.9400 -118.1200 107.9500  1.0817
PATCHING FIRS GLYP
```

Unlike ALA and most protein residues, in which CA is bonded to HA and CB, in GLY it is bonded to a pair of hydrogens, HA1 and HA2. Also, the hydrogen bonded to N is named H rather than HN. For these reasons, the default NTER patch cannot be applied to GLY and the PATCHING statement is used to change the default first-residue patch for GLY to GLYP. Similarly, the LINK patch above cannot be used for GLY residues, so the additional patches LIG1, LIG2, and LIG3 are provided to link GLY to non-GLY, non-GLY to GLY, and GLY to GLY.

Water is also defined as a residue, as shown below, but some care is required for its use. A third bond, not required by NAMD, is included to allow CHARMM to make the water molecule rigid. This ring structure would confuse angle and dihedral autogeneration, so segments of water must be generated with autogeneration disabled, and therefore an explicit angle is also included. If this third bond is removed from the water topology, then autogeneration must still be disabled to avoid duplicating the angle, unless the angle is also removed.

```
RESI TIP3          0.000 ! tip3p water model, generate using noangle nodihedral
GROUP
ATOM OH2  OT      -0.834
ATOM H1   HT       0.417
ATOM H2   HT       0.417
BOND OH2 H1 OH2 H2 H1 H2    ! the last bond is needed for shake
ANGLE H1 OH2 H2             ! required
ACCEPTOR OH2
PATCHING FIRS NONE LAST NONE
```

The residue definitions for the ions below are exceedingly simple.

```
RESI SOD          1.00 ! Sodium Ion
GROUP
ATOM SOD  SOD     1.00
PATCHING FIRST NONE LAST NONE

RESI CLA         -1.00 ! Chloride Anion
GROUP
ATOM CLA  CLA    -1.00
PATCHING FIRST NONE LAST NONE
```

We have discussed only those parts of the topology files associated with proteins and solvent. There is much additional information regarding proteins, not to mention lipids and nucleic acids, included in the comments in the topology files themselves.

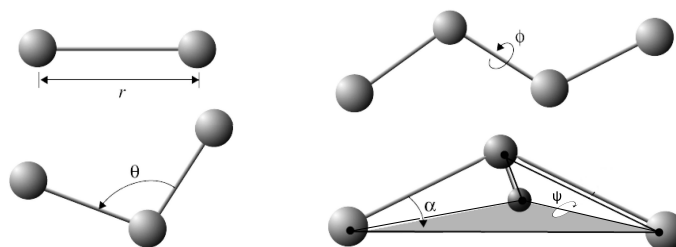


Figure 24: Internal coordinates for bonded interactions: r governs bond stretching; θ represents the bond angle term; ϕ gives the dihedral angle; the small out-of-plane angle α is governed by the so-called “improper” dihedral angle ψ .

```
!Watanabe, M.; Wiorkiewicz-Kuczera, J.; Yin, D.; Karplus, M. All-atom
!empirical potential for molecular modeling and dynamics Studies of
!proteins. Journal of Physical Chemistry B, 1998, 102, 3586-3616.
!
```

The first set of entries in the parameter file are those for bonds, indicated by the BONDS keyword. Each entry consists of a pair of atom types, a spring constant, and an equilibrium length. The bond potential function is $K_b(b-b_0)^2$, where b is the bond length in Angstroms. Bonds are a stiff degree of freedom in biomolecules, so the energy function is only accurate for values near the equilibrium length. Entries are present for every type of bond present in the topology file. Fig. 24 illustrates how bond length, bond angle, dihedral angle and improper angle are defined. The beginning of the bonds section is shown below:

```
BONDS
!
!V(bond) = Kb(b - b0)**2
!
!Kb: kcal/mole/A**2
!b0: A
!
!atom type Kb          b0
!
!Carbon Dioxide
CST  OST  937.96      1.1600 ! JES
!Heme to Sulfate (PSUL) link
SS   FE   250.0       2.3200 !force constant a guess
      !equilibrium bond length optimized to reproduce
      !CSD survey values of
      !2.341pm0.01 (mean, standard error)
      !adm jr., 7/01
C    C    600.000     1.3350 ! ALLOW ARO HEM
```

```

! Heme vinyl substituent (KK, from propene (JCS))
CA CA 305.000 1.3750 ! ALLOW ARO
! benzene, JES 8/25/89
CE1 CE1 440.000 1.3400 !
! for butene; from propene, yin/adm jr., 12/95
CE1 CE2 500.000 1.3420 !
! for propene, yin/adm jr., 12/95
CE1 CT2 365.000 1.5020 !
! for butene; from propene, yin/adm jr., 12/95
CE1 CT3 383.000 1.5040 !
! for butene, yin/adm jr., 12/95
CE2 CE2 510.000 1.3300 !
! for ethene, yin/adm jr., 12/95

```

The CHARMM potential function is designed to confuse physicists, as the form is $K_b(b - b_0)^2$, rather than the traditional $\frac{1}{2}k_b(b - b_0)^2$, and therefore the K_b given in the parameter files is half the value of a traditional spring constant. Also, while the units kcal/mol for energy, Angstroms for length, atomic masses, electron charges, and either fs or ps for time may be convenient for input and output, tortuous unit conversions are required to express the equations of motion.

The next section gives parameters for every type of angle present in the topology file, indicated by the ANGLES keyword. The angle potential function is $K_\theta(\theta - \theta_0)^2$, where θ is the measure of the angle in degrees. Angles are a stiff degree of freedom in biomolecules as well, so the energy function is only accurate for values near the equilibrium angle. Since angles are formed from combinations of bonds, there are many more types of angles than types of bonds. Each entry consists of three atom types, a spring constant, and an equilibrium angle. A small minority of entries also contain Urey-Bradley parameters, which are a spring constant and equilibrium length for a bond-like term between the first and third atoms in the angle. The beginning of the angles section is shown below, with a Urey-Bradley term in the first entry only:

```

ANGLES
!
!V(angle) = Ktheta(Theta - Theta0)**2
!
!V(Urey-Bradley) = Kub(S - S0)**2
!
!Ktheta: kcal/mole/rad**2
!Theta0: degrees
!Kub: kcal/mole/A**2 (Urey-Bradley)
!S0: A
!
!atom types      Ktheta      Theta0      Kub      S0
!
!Carbon Dioxide, JES
OST CST OST 3000.00 180.0000 ! CO2, JES
!Heme to Sulfate (PSUL) link

```

```

CS  SS  FE  50.0    100.6    !force constant a guess
      !equilibrium angle optimized to reproduce
      !CSD survey values
      !107.5pm0.6 (mean, standard error)
      !adm jr., 7/01
SS  FE  NPH  100.0    90.0    !force constant a guess
      !adm jr., 7/01
!
CA  CA  CA  40.000   120.00  35.00  2.41620 ! ALLOW  ARO
      ! JES 8/25/89
CE1 CE1 CT2  48.00   123.50  !
      ! for 2-butene, yin/adm jr., 12/95
CE1 CE1 CT3  48.00   123.50  !
      ! for 2-butene, yin/adm jr., 12/95
CE1 CT2 CT3  32.00   112.20  !
      ! for 1-butene; from propene, yin/adm jr., 12/95
CE2 CE1 CT2  48.00   126.00  !
      ! for 1-butene; from propene, yin/adm jr., 12/95
CE2 CE1 CT3  47.00   125.20  !
      ! for propene, yin/adm jr., 12/95

```

The next section gives parameters for every type of dihedral present in the topology file; there are even more dihedrals than there are angles. Since dihedrals represent the energy of rotation around a covalent bond, which is the source of most conformational flexibility in biomolecules, they must provide a smooth energy for 360 degrees. This is done in most cases with a single sinusoid, $K_\chi(1 + \cos(n(\chi - \delta)))$ where χ is the angle between the plane containing the first three atoms in the dihedral and the plane containing the last three. The “multiplicity” n is typically 1, 2, or 3, although for a small number of cases two or three terms with different values of n are provided for the same atom types. You may can observe in the excerpts below that the dihedral spring constants are one to two orders of magnitude lower than for angles, with an order of magnitude difference between flexible and inflexible dihedrals.

```

DIHEDRALS
!
!V(dihedral) = Kchi(1 + cos(n(chi) - delta))
!
!Kchi: kcal/mole
!n: multiplicity
!delta: degrees
!
!atom types          Kchi    n    delta
!
!Heme to Sulfate (PSUL) link
X  FE  SS  X      0.0000  4    0.00 ! guess
      !adm jr., 7/01
X  CS  SS  X      0.0000  3    0.20 ! guess
      !from methanethiol, HS S CT3 HA

```

```

!adm jr., 7/01

C   CT1 NH1 C       0.2000 1 180.00 ! ALLOW PEP
      ! ala dipeptide update for new C VDW Rmin, adm jr., 3/3/93c
C   CT2 NH1 C       0.2000 1 180.00 ! ALLOW PEP
      ! ala dipeptide update for new C VDW Rmin, adm jr., 3/3/93c
C   N   CP1 C       0.8000 3  0.00 ! ALLOW PRO PEP
      ! 6-31g* AcProNH2, ProNH2, 6-31g**/3-21g AcProNHCH3 RLD 4/23/93
CA  CA  CA  CA      3.1000 2 180.00 ! ALLOW  ARO
      ! JES 8/25/89
CA  CPT CPT CA      3.1000 2 180.00 ! ALLOW  ARO
      ! JWK 05/14/91 fit to indole

```

Because of the large numbers of dihedral terms required to describe a complete protein, the wildcard atom type X is occasionally used. These parameters will be used in NAMD if a more specific match is not found elsewhere in the parameter file.

```

!X  C   C   X       4.0000 2 180.00 ! ALLOW HEM
      ! Heme (6-liganded): substituents (KK 05/13/91)
X   C   NC2 X       2.2500 2 180.00 ! ALLOW  PEP POL ARO
      ! 9.0->2.25 GUANIDINIUM (KK)
X   CD  OH1 X       2.0500 2 180.00 ! ALLOW  PEP POL ARO ALC
      ! adm jr, 10/17/90, acetic acid C-Oh rotation barrier
X   CD  OS  X       2.0500 2 180.00 ! ALLOW  PEP POL
      ! adm jr. 3/19/92, from lipid methyl acetate
X   CE1 CE1 X       0.1500 1  0.00
      ! 2-butene, adm jr., 2/00 update
X   CE1 CE1 X       8.5000 2 180.00
      ! 2-butene, adm jr., 2/00 update
X   CE2 CE2 X       4.9000 2 180.00 !
! for ethene, yin/adm jr., 12/95

```

The final bond-like terms in the parameter file are improper, which are used exclusively and explicitly in the molecular topology to maintain planarity. As such, the harmonic form $K_{\psi}(\psi - \psi_0)^2$ with a large spring constant and ψ_0 typically zero is used to restrain deformations among an atom and three atoms bonded to it. As with dihedrals, ψ is angle between the plane containing the first three atoms and the plane containing the last three. Notice below that wildcard atom types occur in the second and third positions, rather than the first and fourth as in dihedrals.

```

IMPROPER
!
!V(improper) = Kpsi(psi - psi0)**2
!
!Kpsi: kcal/mole/rad**2
!psi0: degrees
!note that the second column of numbers (0) is ignored

```



```

!
!atom types          Kpsi          psi0
!
CPB CPA NPH CPA 20.8000 0 0.0000 ! ALLOW HEM
! Heme (6-liganded): porphyrin macrocycle (KK 05/13/91)
CPB X X CE1 90.0000 0 0.0000 ! ALLOW HEM
! Heme (6-liganded): substituents (KK 05/13/91)
CT2 X X CPB 90.0000 0 0.0000 ! ALLOW HEM
! Heme (6-liganded): substituents (KK 05/13/91)
CT3 X X CPB 90.0000 0 0.0000 ! ALLOW HEM
! Heme (6-liganded): substituents (KK 05/13/91)
!HA C C HA 20.0000 0 0.0000 ! ALLOW PEP POL ARO

```

The next section gives the interpolation values for CMAP, which is a correction map to the backbone dihedral energy. Each ϕ and ψ dihedral angle, ranging from -180 to 180, is divided into 24 grid points; the energy correction at each point is given. A continuous function can be constructed using these values along with an interpolation formula, which can be found in the references below.

```

CMAP
! 2D grid correction data. The following surfaces are the correction
! to the CHARMM22 phi, psi alanine, proline and glycine dipeptide surfaces.
! Use of CMAP requires generation with the topology file containing the
! CMAP specifications along with version 31 or later of CHARMM. Note that
! use of "skip CMAP" yields the charmm22 energy surfaces.
!
! references
!MacKerell, A.D., Jr., Feig, M., Brooks, C.L., III, Accurate Treatment of
!Protein Backbone Conformational Energetics in Empirical Force Fields, Submitted
!for publication.

!MacKerell, A.D., Jr., Feig, M., Brooks, C.L., III, Improved Treatment of the
!Protein Backbone in Empirical Force Fields, Journal of the American Chemical
!Society, In Press.

! alanine map
C NH1 CT1 C NH1 CT1 C NH1 24

!-180
0.126790 0.768700 0.971260 1.250970 2.121010
2.695430 2.064440 1.764790 0.755870 -0.713470
0.976130 -2.475520 -5.455650 -5.096450 -5.305850
-3.975630 -3.088580 -2.784200 -2.677120 -2.646060
-2.335350 -2.010440 -1.608040 -0.482250

!-165
-0.802290 1.377090 1.577020 1.872290 2.398990
2.461630 2.333840 1.904070 1.061460 0.518400

```

```
-0.116320 -3.575440 -5.284480 -5.160310 -4.196010
-3.276210 -2.715340 -1.806200 -1.101780 -1.210320
-1.008810 -0.637100 -1.603360 -1.776870
```

Finally we come to the nonbonded interaction parameters. The NONBONDED statement includes a list of parameters which are used as defaults by the program CHARMM, but are ignored by NAMD. Those shown below correspond to the NAMD settings exclude scaled1-4, switching on, pairlistdist 14.0, cutoff 12.0, switchdist 10.0, dielectric 1.0, and 1-4scaling 1.0:

```
NONBONDED nbxmod 5 atom cdiel shift vatom vdistance vswitch -
cutnb 14.0 ctofnb 12.0 ctonnb 10.0 eps 1.0 e14fac 1.0 wmin 1.5
!adm jr., 5/08/91, suggested cutoff scheme
```

Recall that the partial charge of each atom is specified in the topology and PSF files and is independent of the atom type. Therefore the only type-based parameters are for the van der Waals interactions, which are represented by the classic Lennard-Jones potential (expressed in the somewhat unconventional form) $\epsilon[(r_{min}/r)^{12} - 2(r_{min}/r)^6]$. Observe that at $r = r_{min}$ the force is zero and the energy is $-\epsilon$. Rather than providing a different value of epsilon could be provided for every possible combination of atom types, only one value is provided per type and inter-type interactions are calculated using the sum of the radii $r_{min}/2$ and the geometric mean of the well-depths ϵ . By convention, the ϵ values are negative in the parameter file, as seen here:

```
!
!V(Lennard-Jones) = Eps,i,j[(Rmin,i,j/ri,j)**12 - 2(Rmin,i,j/ri,j)**6]
!
!epsilon: kcal/mole, Eps,i,j = sqrt(eps,i * eps,j)
!Rmin/2: A, Rmin,i,j = Rmin/2,i + Rmin/2,j
!
!atom ignored    epsilon      Rmin/2  ignored    eps,1-4      Rmin/2,1-4
!
C      0.000000   -0.110000    2.000000 ! ALLOW    PEP POL ARO
! NMA pure solvent, adm jr., 3/3/93
CA     0.000000   -0.070000    1.992400 ! ALLOW    ARO
! benzene (JES)
CC     0.000000   -0.070000    2.000000 ! ALLOW    PEP POL ARO
! adm jr. 3/3/92, acetic acid heat of solvation
CD     0.000000   -0.070000    2.000000 ! ALLOW    POL
! adm jr. 3/19/92, acetate a.i. and dH of solvation
CE1    0.000000   -0.068000    2.090000 !
! for propene, yin/adm jr., 12/95
CE2    0.000000   -0.064000    2.080000 !
! for ethene, yin/adm jr., 12/95
CM     0.000000   -0.110000    2.100000 ! ALLOW    HEM
! Heme (6-liganded): CO ligand carbon (KK 05/13/91)
```

When the scaled1-4 exclusion policy is used (as it should with the CHARMM force field) nonbonded interactions of atoms separated by three bonds (i.e.,

atoms 1 and 4 in the chain 1-2-3-4) are modified. Even if the scaling factor for electrostatics is 1.0 (as it should be for modern CHARMM force fields), special modified van der Waals parameters are used for 1-4 pairs of atoms for which they are specified, as in the examples below.

```
!atom ignored   epsilon      Rmin/2  ignored   eps,1-4      Rmin/2,1-4
!
CP1  0.000000  -0.020000   2.275000  0.000000  -0.010000    1.900000 ! ALLOW  ALI
      ! alkane update, adm jr., 3/2/92
CP2  0.000000  -0.055000   2.175000  0.000000  -0.010000    1.900000 ! ALLOW  ALI
      ! alkane update, adm jr., 3/2/92
CP3  0.000000  -0.055000   2.175000  0.000000  -0.010000    1.900000 ! ALLOW  ALI
      ! alkane update, adm jr., 3/2/92
```

The parameter file ends with a reference to parameters for explicit hydrogen bond energy terms. These are obsolete, no longer present in the CHARMM force field, and therefore not implemented by NAMD.

```
HBOND CUTHB 0.5 ! If you want to do hbond analysis (only), then use
                ! READ PARAM APPEND CARD
                ! to append hbond parameters from the file: par_hbond.inp
```

END

For information on how the parameters have been derived, you must consult the corresponding publications referenced in the parameter files themselves or listed on the MacKerell web site http://mackerell.umaryland.edu/charmm_ff.shtml.

E NAMD Configuration Files

The NAMD configuration file (also called a config file, .conf file, or .namd file) is given to NAMD on the command line and specifies virtually everything about the simulation to be done. The only exceptions are details relating to the parallel execution environment, which vary between platforms. Therefore, the config file should be portable between machines, platforms, or numbers of processors in a run, as long as the referenced input files are available.

As a convenience, on startup NAMD will switch to the directory that contains the config file, so that all file paths are relative to that directory. NAMD also accepts multiple config files on the command line, but changes directories before parsing each file, so it is best to keep everything in the same directory when using multiple config files.

NAMD parses its configuration file using the Tcl scripting language, which you should be familiar with if you have done any serious work using VMD. However, to remain compatible with config files from earlier version of NAMD which did not include Tcl, several compromises have been made. Tcl is a case sensitive language, so the `$temp` and `$TEMP` are different variables. NAMD's config file options are implemented as case-insensitive Tcl commands, however, so `temperature 300`, `Temperature 300`, or even `tEmPerATURe 300` will all have the same effect.

NAMD config files were historically order-independent, and the whole file was parsed before any files were read or calculations done. Now that NAMD incorporates more advanced scripting, the config file is parsed up to the point where one of the case-sensitive “action” commands such as `minimize` or `run` are encountered; at this point the input files are read and real calculation begins. Beyond this point, the config file is order-dependent and only these action commands and a subset of configuration options may be given. Also, at this point any comments must follow the rules of Tcl, using a semicolon to end a command before using `#` to start a comment on the same line; it is good practice to follow these rules everywhere in the file.

We will now walk through a NAMD configuration file template that contains options for common simulation methods in NAMD. A version of this file should be available in the tutorial materials as `sample.conf`.

First we specify the files that contain the molecular structure and initial conditions. A `coordinates` PDB file is always required, even if the actual coordinates will come from a binary coordinates file.

```
structure      mypsf.psf
coordinates    mypdb.pdb
```

Setting the Tcl variable `$temperature` makes it easy to change the target temperature for many options.

```
set temperature 310 ;# target temperature used several times below
```

If we are starting from scratch, we'll use the coordinates from the PDB file and take velocities randomly from a Boltzmann distribution, using the `$temperature` variable.

```
# starting from scratch
temperature      $temperature      ;# initialize velocities randomly
```

Otherwise we'll read in the binary output files of the previous run. We use the Tcl variable `$inputname` to avoid errors in typing the input file names, since we will end up copying and modifying this file several times during the course of a long simulation. The `extendedSystem` file holds the periodic cell dimensions that are needed to continue after a constant pressure simulation. In order to start numbering timesteps with the final step of the previous run, we use `firsttimestep` to specify the timestep on which the input coordinates and velocities were written. The number of steps calculated in this run will be `numsteps - firsttimestep`.

```
# continuing a run
set inputname    myinput           ;# only need to edit this in one place!
binCoordinates   $inputname.coor   ;# coordinates from last run (binary)
binVelocities    $inputname.vel    ;# velocities from last run (binary)
extendedSystem   $inputname.xsc    ;# cell dimensions from last run
firsttimestep    50000             ;# last step of previous run
numsteps         100000            ;# run stops when this step is reached
```

The `outputName` prefix will be used to create all of the trajectory (`.dcd`, `.xst`), output (`.coor`, `vel`, `.xsc`), and restart (`.restart.coor`, `.restart.vel`, `.restart.xsc`) files generated by this run. Be careful that this is different from `$myinput`, or the job will overwrite its input files!

```
outputName       myoutput         ;# base name for output from this run
```

We will write restart files, coordinate trajectory `.dcd` files, and extended system (periodic cell) trajectory `.xst` files at regular intervals.

```
restartfreq      500              ;# 500 steps = every 1ps
dcdfreq          500
xstFreq          500
```

The default is to print energies every steps, but that makes for a very long file, so we'll cut it down to every 100 steps. We'll also enable the printing of performance information every 1000 steps.

```
outputEnergies   100              ;# 100 steps = every 0.2 ps
outputTiming     1000             ;# shows time per step and time to completion
```

Next are the parameter file itself and the options that control the nonbonded potential functions. These are mostly specified by the CHARMM force field, but the cutoff and other distances may be shortened when full electrostatics are used; Just be sure that you adjust all of the distances together. The `pairlistdist` can be made longer if you see warnings in the NAMD output, but making it bigger than necessary will reduce performance.

```

# Force-Field Parameters
paraTypeCharmm      on
parameters          par_all27_prot_lipid.inp

# These are specified by CHARMM
exclude             scaled1-4
1-4scaling         1.0
switching          on

# You have some freedom choosing the cutoff
cutoff             12. ;# may use smaller, maybe 10., with PME
switchdist        10. ;# cutoff - 2.

# Promise that atom won't move more than 2A in a cycle
pairlistdist      14. ;# cutoff + 2.

```

The chosen `stepspercycle` is related to `pairlistdist` above, as pairlists are generated at the beginning of each cycle and are assumed to contain every atom that passes within the cutoff distance during entire cycle. Warnings will appear in the output if `pairlistdist` is too short (or `stepspercycle` is too large). The length of the simulation must be an integer number of cycles.

```
stepspercycle      10 ;# redo pairlists every ten steps
```

The integration timestep is normally limited to 1 fs. This can be extended to 2 fs by fixing the length of all bonds in the molecule involving hydrogen atoms via `rigidBonds all`, which also makes water molecules completely rigid. To only make water rigid, use `rigidBonds water` and a 1 fs timestep. For any simulations involving water molecules, one should make water rigid since water molecules have been parametrized as rigid water. Nonbonded forces must be calculated at least every 2 fs, which in this example is every step. Full electrostatics forces (from particle mesh Ewald, discussed below) are evaluated every other step in this example. `nonbondedFreq` and `fullElectFrequency` must evenly divide `stepspercycle`.

```

# Integrator Parameters
timestep          2.0 ;# 2fs/step
rigidBonds        all ;# needed for 2fs steps
nonbondedFreq     1 ;# nonbonded forces every step
fullElectFrequency 2 ;# PME only every other step

```

Langevin dynamics balances friction with random noise to drive each atom in the system towards a target temperature. The following parameters are good for equilibration, but a `langevinDamping` as low as 1. would be sufficient for simulation. Higher damping may be necessary if, for example, work done on the system by steering forces is driving up the temperature.

```

# Constant Temperature Control
langevin          on ;# langevin dynamics

```

```

langevinDamping    1.           ;# damping coefficient of 1/ps
langevinTemp       $temperature ;# random noise at this level
langevinHydrogen   no          ;# don't couple bath to hydrogens

```

If the simulation will use periodic boundary conditions, they are specified as shown below. Like the `temperature` option, these should only be given when starting a simulation from scratch, since the basis vectors will fluctuate during constant pressure simulation and updated values need to be read via `extendedSystem` from a `.xsc` file.

```

# Periodic Boundary conditions
cellBasisVector1  31.2  0.  0.  ;# vector to the next image
cellBasisVector2   0.  44.8  0.
cellBasisVector3   0.   0  51.3
cellOrigin         0.   0.  0.  ;# the *center* of the cell

```

The cell origin is the one coordinate that does not change during constant pressure simulation. This point plays a role in calculating the pressure contribution due to fixed atoms, harmonic restraints, and other “external” forces. To minimize pressure fluctuations, this point should be close to the center of the macromolecule of interest.

The origin also defines the center of the periodic cell to which coordinates will be wrapped on output if the following options below are used. With wrapping, some molecules will jump between sides of the cell in the trajectory file to yield the periodic image nearest to the origin. Without wrapping, molecules will have smooth trajectories, but water in the trajectory may appear to explode as individual molecules diffuse. Wrapping only affects output, not the correctness of the simulation.

```

wrapWater          on           ;# wrap water to central cell
wrapAll            on           ;# wrap other molecules too
wrapNearest        off          ;# use for non-rectangular cells

```

Particle mesh Ewald (PME) full electrostatics are more accurate and less expensive than larger cutoffs, and are recommended for most work. PME is only applicable to periodic simulations, and the user must specify a grid corresponding to the size of the periodic cell. PME grid dimensions should have small integer factors only and be greater than or equal to length of the basis vector. To manually define the grid size instead of letting NAMD choose the dimensions for you according to these guidelines, replace the `GridSpacing` command with explicit `GridSize` commands instead.

```

#PME (for full-system periodic electrostatics)
PME                yes

# let NAMD determine grid
PMEGridSpacing     1.0

```

```
# manually specify grid
#PMEGridSizeX      32  ;# 2^5, close to 31.2
#PMEGridSizeY      45  ;# 3^2 * 5, close to 44.8
#PMEGridSizeZ      54  ;# 2 * 3^3, close to 51.3
```

Constant pressure is recommended for periodic simulations. Using group-based pressure to control the periodic cell fluctuations is desirable because the atom-based pressure has more high-frequency noise. `useFlexibleCell` is useful for anisotropic systems such as membranes, allowing the height, length, and width of the cell to vary independently, possibly even fixing the lipid cross-sectional (x-y plane) area with `useConstantArea`. For a protein surrounded by water there is nothing to prevent the cell from becoming highly extended in one dimension, so it is better to choose `useFlexibleCell no` in this case.

```
# Constant Pressure Control (variable volume)
useGroupPressure    yes ;# needed for rigid bonds
useFlexibleCell     no  ;# no for water box, yes for membrane
useConstantArea     no  ;# no for water box, maybe for membrane
```

The actual parameters of the Nosé-Hoover Langevin piston method control the target pressure and the dynamical properties of the barostat. A “piston” with a longer period (i.e., larger mass) will better damp out fluctuations in the instantaneous pressure. Langevin dynamics is applied to the piston itself coupling it to a heat bath with a damping constant of $1/\text{langevinPistonDecay}$. We set `langevinPistonDecay` smaller than `langevinPistonPeriod` to ensure that harmonic oscillations in the periodic cell are overdamped.

```
langevinPiston      on
langevinPistonTarget 1.01325      ;# pressure in bar -> 1 atm
langevinPistonPeriod 100.         ;# oscillation period around 100 fs
langevinPistonDecay  50.          ;# oscillation decay time of 50 fs
langevinPistonTemp   $temperature ;# coupled to heat bath
```

When initially assembling a system it is sometimes useful to fix the protein while equilibrating water or lipids around it. These options read a PDB file containing flags for the atoms to fix. The number and order of atoms in the PDB file must exactly match that of the PSF and other input files.

```
fixedAtoms          on
fixedAtomsFile      myfixedatoms.pdb ;# flags are in this file
fixedAtomsCol       B                ;# set beta non-zero to fix an atom
```

The interactive MD features of NAMD and VMD allow you to connect to a running simulation to apply steering forces manually. These options affect performance, and should therefore not be used unless you are actually steering the simulation.


```
IMDon          on
IMDport        3000    ;# port number (enter it in VMD)
IMDfreq        1      ;# send every 1 frame
IMDwait        no     ;# wait for VMD to connect before running?
```

Now we minimize the system to eliminate bad initial contacts, reinitialize the velocities to the desired target temperature (since minimization sets velocities to zero), and run for 100 ps. We could accomplish the same thing with two different NAMD runs using the `numsteps` and `minimization` options. Scripting commands such as those below override `numsteps`.

```
minimize          1000    ;# lower potential energy for 1000 steps
reinitvels        $temperature ;# since minimization zeros velocities
run 50000 ;# 100ps
```

Naturally, these are not all of the configuration options accepted by NAMD, but only a rapid introduction to those you are most likely to encounter. Documentation for these and many other options can be found in the Users Guide.

F NAMD Standard Output

When NAMD runs, important information on the progress of the simulation is written to standard output, appearing on the console unless output from NAMD is redirected to a file. This output is designed to be easy for both humans and programs to interpret.

At the beginning of the file, the version of NAMD being used is presented, along with other useful information, some of which is reported back to the developers over the network to help us track NAMD's popularity.

```
Info: NAMD 2.5b2ss03 for Linux-i686-Clustermatic
Info:
Info: Please visit http://www.ks.uiuc.edu/Research/namd/
Info: and send feedback or bug reports to namd@ks.uiuc.edu
Info:
Info: Please cite James C. Phillips, Rosemary Braun, Wei Wang, James Gumbart,
Info: Emad Tajkhorshid, Elizabeth Villa, Christophe Chipot, Robert D. Skeel,
Info: Laxmikant Kale, and Klaus Schulten. Scalable molecular dynamics with
Info: NAMD. Journal of Computational Chemistry, 26:1781-1802, 2005.
Info: in all publications reporting results obtained with NAMD.
Info:
Info: Built Fri May 30 13:09:06 CDT 2003 by jim on umbriel
Info: Sending usage information to NAMD developers via UDP.
Info: Sent data is: 1 NAMD 2.5b2ss03 Linux-i686-Clustermatic 47 umbriel jim
Info: Running on 47 processors.
```

This is followed by a long list of the various configuration options and summaries of information extracted from the parameter and structure files. This is mostly self-explanatory and just restates the config file options, or the defaults for options not specified.

NAMD goes through several phases to setup data structures for the actual simulation, reporting memory usage (for the first process only!). Patches are the cells that NAMD uses to spread atoms across a parallel simulation, although the size of the patch grid is independent of the number of processors being used.

```
Info: Entering startup phase 0 with 6668 kB of memory in use.
Info: Entering startup phase 1 with 6668 kB of memory in use.
Info: Entering startup phase 2 with 10212 kB of memory in use.
Info: Entering startup phase 3 with 10212 kB of memory in use.
Info: PATCH GRID IS 4 (PERIODIC) BY 4 (PERIODIC) BY 4 (PERIODIC)
Info: REMOVING COM VELOCITY -0.0765505 0.00822415 -0.00180344
Info: LARGEST PATCH (31) HAS 408 ATOMS
Info: Entering startup phase 4 with 13540 kB of memory in use.
Info: Entering startup phase 5 with 13540 kB of memory in use.
Info: Entering startup phase 6 with 13540 kB of memory in use.
Info: Entering startup phase 7 with 13540 kB of memory in use.
Info: COULOMB TABLE R-SQUARED SPACING: 0.0625
Info: COULOMB TABLE SIZE: 705 POINTS
Info: NONZERO IMPRECISION IN COULOMB TABLE: 4.03897e-28 (692) 1.00974e-27 (692)
```

Info: NONZERO IMPRECISION IN COULOMB TABLE: 2.5411e-21 (701) 5.92923e-21 (701)
 Info: Entering startup phase 8 with 13540 kB of memory in use.
 Info: Finished startup with 13540 kB of memory in use.

Energies, along with temperatures and pressures, are printed as a single line with a unique prefix for easy processing with utilities such as grep and awk. An ETITLE line is printed once for every ten ENERGY lines. The spacing of the fields, however, is designed to be easy to scan on an 80-column display, as seen below:

ETITLE:	TS	BOND	ANGLE	DIHED	IMPRP
	ELECT	VDW	BOUNDARY	MISC	KINETIC
	TOTAL	TEMP	TOTAL2	TOTAL3	TEMPAVG
	PRESSURE	GPRESSURE	VOLUME	PRESSAVG	GPRESSAVG
ENERGY:	1000	0.0000	0.0000	0.0000	0.0000
	-97022.1848	9595.3175	0.0000	0.0000	14319.5268
	-73107.3405	300.2464	-73076.6148	-73084.1411	297.7598
	-626.5205	-636.6638	240716.1374	-616.5673	-616.6619

Energy values are in kcal/mol. This example is from a simulation of pure, rigid water, so the BOND, ANGLE, DIHED, and IMPRP terms are all zero. BOUNDARY energy is from spherical boundary conditions and harmonic restraints, while MISC energy is from external electric fields and various steering forces. TOTAL is the sum of the various potential energies, and the KINETIC energy. TOTAL2 uses a slightly different kinetic energy that is better conserved during equilibration in a constant energy ensemble. TOTAL3 is another variation with much smaller short-time fluctuations that is also adjusted to have the same running average as TOTAL2. Defects in constant energy simulations are much easier to spot in TOTAL3 than in TOTAL or TOTAL2.

Pressure values are in bar. Temperature values are in Kelvin. PRESSURE is the pressure calculated based on individual atoms, while GPRESSURE incorporates hydrogen atoms into the heavier atoms to which they are bonded, producing smaller fluctuations. The TEMPAVG, PRESSAVG, and GPRESSAVG are the average of temperature and pressure values since the previous ENERGY output; for the first step in the simulation they will be identical to TEMP, PRESSURE, and GPRESSURE.

To estimate NAMD's performance for a long simulation, look for the "Benchmark time" lines printed in the first several hundred steps. These are a measure of NAMD's performance after startup and initial load balancing have been completed; this number should be very close to the long-time average.

Info: Benchmark time: 47 CPUs 0.0475851 s/step 0.275377 days/ns 13540 kB memory

Periodic performance output, if enabled, shows the CPU and wallclock time used by the first processor (not the aggregate of all processors in the simulation). The hours remaining are estimated based on performance since the last TIMING output.

TIMING: 1000 CPU: 18.35, 0.01831/step Wall: 50.1581, 0.0499508/step, 6.92374
hours remaining, 14244 kB of memory in use.

Lines such as these are printed whenever file output occurs.

```
OPENING COORDINATE DCD FILE
WRITING COORDINATES TO DCD FILE AT STEP 1000
```

It is important to search the NAMD output for Warning and ERROR lines, which report unusual and possibly erroneous conditions. In the example below, the pairlist distance is too short or the cycle length is too long, possibly leading to reduced performance.

```
Warning: Pairlistdist is too small for 1 patches during timestep 17.
Warning: Pairlists partially disabled; reduced performance likely.
Warning: 20 pairlist warnings since previous energy output.
```

It is foolish to ignore warnings you do not understand!

G Water Sphere tcl Script

```

### Script to immerse ubiquitin in a sphere of water just large enough
### to cover it

set molname ubq

mol new ${molname}.psf
mol addfile ${molname}.pdb

### Determine the center of mass of the molecule and store the coordinates
set cen [measure center [atomselect top all] weight mass]
set x1 [lindex $cen 0]
set y1 [lindex $cen 1]
set z1 [lindex $cen 2]
set max 0

### Determine the distance of the farthest atom from the center of mass
foreach atom [[atomselect top all] get index] {
    set pos [lindex [[atomselect top "index $atom"] get {x y z}] 0]
    set x2 [lindex $pos 0]
    set y2 [lindex $pos 1]
    set z2 [lindex $pos 2]
    set dist [expr pow(($x2-$x1)*($x2-$x1) + ($y2-$y1)*($y2-$y1) +
        ($z2-$z1)*($z2-$z1),0.5)]
    if {$dist > $max} {set max $dist}
}

mol delete top

### Solvate the molecule in a water box with enough padding (15 A).
### One could alternatively align the molecule such that the vector
### from the center of mass to the farthest atom is aligned with an axis,
### and then use no padding
package require solvate
solvate ${molname}.psf ${molname}.pdb -t 15 -o del_water

resetpsf
package require psfgen
mol new del_water.psf
mol addfile del_water.pdb
readpsf del_water.psf
coordpdb del_water.pdb

### Determine which water molecules need to be deleted and use a for loop
### to delete them
set wat [atomselect top "same residue as {water and ((x-$x1)*(x-$x1) +
    (y-$y1)*(y-$y1) + (z-$z1)*(z-$z1))<($max*$max)}"]
set del [atomselect top "water and not same residue as {water and
    ((x-$x1)*(x-$x1) + (y-$y1)*(y-$y1) + (z-$z1)*(z-$z1))<($max*$max)}"]

```

```
set seg [$del get segid]
set res [$del get resid]
set name [$del get name]
for {set i 0} {$i < [llength $seg]} {incr i} {
    delatom [lindex $seg $i] [lindex $res $i] [lindex $name $i]
}
writepsf ${molname}_ws.psf
writepdb ${molname}_ws.pdb

mol delete top

mol new ${molname}_ws.psf
mol addfile ${molname}_ws.pdb
puts "CENTER OF MASS OF SPHERE IS: [measure center [atomselect top all] weight mass]"
puts "RADIUS OF SPHERE IS: $max"
mol delete top
```